

COUNTRY RISK SUMMARIES

Powered by FocusPoint International, Inc.



Report for the week ending July 7th, 2024.

Latest Updates: Afghanistan, Burkina Faso, Burma (Myanmar), Colombia, Ecuador, Ethiopia, Haiti, India, Iraq, Israel, Kenya, Lebanon, Mali, Mexico, Niger, Nigeria, Pakistan, Sudan, Syria, Ukraine, and Venezuela.

- **Afghanistan:** On July 3, at least three Taliban members were killed and a further two wounded when National Resistance Front (NRF) militants attacked the entrance gate of Kabul's military airport, located some 200 meters (0.12 miles) from Kabul International Airport (KBL/OAKB).
- **Burkina Faso:** On July 1, at least four soldiers that were part of the military were killed in clashes with Jama'at Nasr al-Islam wal Muslimin (JNIM) militants in Tougan, Sourou province.
- **Burkina Faso:** On July 2, the Patriotic Movement for Safeguard and Restoration (PMSR) announced that the mandate for the military transitional government led by Captain Ibrahim Traoré would be extended for sixty months, amid the ongoing internal conflict in the country since the 2022 coup.
- **Burma (Myanmar):** On July 1, at least eight people went missing after a landslide hit a mining area near Panwa town, close to the Myanmar-China border in Kachin state. Security forces cordoned off the area as a search was underway.
- **Burma (Myanmar):** On July 2, thousands of people were trapped in their homes and about 10,000 others were displaced, while electricity supplies and telecommunication lines were suspended in and around Myitkina, Kachin state, due to severe flooding triggered by torrential rainfall. Fuel shortages were also ongoing in the city. Emergency operations were underway.
- **Burma (Myanmar):** On July 2, heavy gunfire was ongoing between junta forces and Myanmar National Democratic Alliance Army (MNDAA) rebels in Lashio township, Shan state, including near Naung Mon police station, Kone Nyaung military camp, Man Hpwee training camp, Nam Pawng village and a regional military command. At least five people were killed in junta shelling. All roads into Lashio city and Lashio Airport (LSH/VYLS) were closed.
- **Burma (Myanmar):** On July 3, at least seven people were killed in clashes between military forces and insurgents in Lashio township, Shan state. Flights to Lashio Airport (LSH/VYLS), including those operated by Myanmar Airways International and Mingalar Airline, were suspended and multiple roads were blocked in the town due to the fighting.
- **Colombia:** On July 1, dozens of truck drivers represented by the Colombian Truck Drivers Association blocked vehicle traffic at the Rumichaca International Bridge between Ipiales, Nariño department of Colombia, and Tulcán, Carchi province of Ecuador, to demand heightened security

866-340-8569



info@wwffocus.com



www.focuspointintl.com





and investment in infrastructure, among other issues.

- **Colombia:** On July 4, at least six government soldiers were killed, and three others wounded in clashes with ex-Revolutionary Armed Forces of Colombia (FARC) militants in the Coposa area of Valdivia municipality, Antioquia department.
- **Ecuador:** On July 1, Aeroméxico suspended flight operations between Mexico City's Licenciado Benito Juárez International Airport (MEX/MMMX) in Mexico and Quito's Mariscal Sucre International Airport (UIO/SEQM) in Ecuador until 18 December, amid a diplomatic crisis between the two countries.
- **Ecuador:** On July 2, authorities declared a state of exception (SoE) in Guayas, Manabí, El Oro, Los Ríos, Santa Elena and Orellana provinces as well as Camilo Ponce Enríquez canton in Azuay province effective for sixty days until August 30. The measure enables security forces to carry out home search operations due to an increase in crime amid an internal armed conflict situation; no curfew measures were included.
- **Ecuador:** On July 4, at least forty-nine people were released amid raids targeting suspected members of the Los Lobos gang in Camilo Ponce Enríquez canton, Azuay province, after they were kidnapped in mining areas of the canton. At least two suspects were detained, and multiple weapons, explosives and ammunition were seized in the operations.
- **Ethiopia:** On July 3, at least seven people were killed, and several others injured in clashes between security forces and residents of informal settlements protesting their demolition in Arorti and Torben Obo kebeles of Adama city, Oromia state.
- **Ethiopia:** On July 3, over one hundred university students en route from Amhara to Addis Ababa on three public buses were kidnapped by suspected Oromo Liberation Front (OLF)-Shene gunmen between Goha Tsion and Tulu Milki in the Gerbe Guracha area of North Showa zone, Oromia region, with security forces. The militants demand a ransom payment of ETB700,000 (USD12,124) per hostage. Further attacks are possible.
- **Ethiopia:** On July 5, at least seven people were killed, and several others injured in clashes between security forces and residents of informal settlements protesting their demolition in Arorti and Torben Obo kebeles of Adama city, Oromia state.
- **Haiti:** On July 4, armed clashes erupted between members of the Haitian National Police and bandits in the Gressier commune of Port-au-Prince arrondissement, Ouest department. Casualty figures were not immediately available.
- **India:** On July 1, police scuffled with protesters and detained some of them during a protest march planned by student activists from the Indira Gandhi statue to the Raj Bhavan in Hyderabad, Telangana state. The march was planned against alleged irregularities in the National Eligibility Entrance Test (NEET).
- **India:** On July 1, a woman who was suspected of attempting to illegally cross the Bangladesh-India

866-340-8569

info@wwfocus.com

www.focuspointintl.com



border, was shot dead by India's Border Security Force (BSF) guards near Meherpur Sadar upazila in Meherpur district, Khulna division, Bangladesh. The BSF opened fire at her from West Bengal's Tehatta in India.

- **India:** On July 2, at least one hundred and twenty-one people were killed and twenty-eight others were injured following a stampede at a religious gathering of around 80,000 people in Phulrai village under Sikandra Rao police station area of Hathras district, Uttar Pradesh state.
- **India:** On July 2, at least twenty-seven people were killed, and several others injured in a stampede at a religious gathering in Phulrai village under the Sikandra Rao police station area of Hathras district, Uttar Pradesh.
- **India:** On July 3, at least forty-six people were killed and over 1.6 million people were affected due to floods across Assam state, including in Barpeta, Biswanath, Cachar, Charaideo, Chirang, Darrang, Dhemaji, Dibrugarh, Golaghat, Jorhat, Kamrup, Karbi Anglong, Karimganj, Lakhimpur, Majuli, Morigaon, Nagaon, Nalbari, Sivasagar, Sonitpur, Tamulpur, Tinsukia and Udalguri districts. Over fourteen bridges and dozens of roads were also damaged due to floods.
- **India:** On July 5, one hundred and fifteen roads were closed while power and water supplies were also disrupted in multiple areas of Himachal Pradesh, particularly in Mandi, Shimla, Chamba, Solan and Kangra districts, amid floods and heavy rainfall since late June. An orange second-highest warning for heavy rainfall was in effect in Mandi, Solan, Shimla and Sirmaur.
- **Iraq:** On July 2, at least two people were injured following a car explosion near the Miran City residential area, located in the Qularaisy neighbourhood of Sulaymaniyah, Kurdistan region. An investigation into the cause of the blast was underway.
- **Israel:** On July 1, at least twenty rockets were launched from Gaza's Khan Younis towards Israeli territory, triggering rocket sirens in Ein Hashlosha. All rockets were intercepted prior to landing and no damage was reported.
- **Israel:** On July 3, at least three people were wounded in a stabbing incident which took place in a shopping centre in Karmiel, North district. The attacker was shot dead on the scene. The motive for the attack was not immediately clear.
- **Israel:** On July 3, at least one person was killed and three people were injured in Kafr Qasim, Central District, following a shooting incident. A police investigation was ongoing.
- **Israel:** On July 6, at least two drones launched from Lebanon struck open areas near Israel's Beit Hillel in Northern District, sparking a fire, while two other drones were shot down over the Galilee area. Sirens were triggered in Kiryat Shmona and surrounding communities. No casualties were immediately reported.
- **Kenya:** On July 2, activists called for 'Occupy Everywhere' protests, where supporters would occupy major roads and hold sit-down protests in Nairobi and other areas countywide to demand

866-340-8569

info@wwfocus.com

www.focuspointintl.com



President Ruto's resignation, despite his withdrawal of the controversial finance bill on June 26.

- **Kenya:** On July 4, protesters were gathered on the Nairobi-Mombasa Highway at Emali, Machakos County amidst the wider context of anti-government and anti-police violence protests. Unconfirmed reports indicated that protesters were attempting to extort fines from drivers wishing to pass through the protest roadblock. Lootings were also reported in the town. No clashes were immediately reported.
- **Lebanon:** On July 3, the Israel Defence Forces (IDF) announced that they struck alleged Hezbollah infrastructure in Blida, Yaroun, Aitaroun and Tayr Harfa areas in southern Lebanon overnight. IDF artillery also struck targets in the Labbounneh and Chihine areas.
- **Lebanon:** On July 3, an Israeli drone strike targeted a vehicle in a successful assassination in the al Housh area of Lebanon's Tyre (Sour).
- **Lebanon:** On July 4, an Israeli drone struck an open area in Aitaroun, while Israeli airstrikes were targeting Houla and Ramyeh in Lebanon's Nabatieh governorate. There were no immediate reports of casualties or further details.
- **Mali:** On July 1, around forty people were killed when some unidentified armed men attacked a suspected wedding gathering in Djiguibombo, Mopti region.
- **Mexico:** On July 3, at least one suspect was injured and arrested after a shootout with the police and a chase from the intersection of Periférico and Mariano Otero to Paseos del Sol in Zapopan, Guadalajara metropolitan area of Jalisco state.
- **Mexico:** On July 4, a red alert directing people to take shelter in a safe place and stay away from windows to avoid injury if they break across Quintana Roo state, as Category-3 Hurricane Beryl tracked around 260km (162 miles) southeast of Tulum. Residents were subject to a curfew in Felipe Carrillo Puerto. Follow all official directives. Anticipate major weather-related disruptions to travel and services in affected areas over the next 24-48 hours.
- **Mexico:** On July 5, at least one soldier was killed, and two others were injured after unidentified gunmen ambushed their patrol convoy in Zamora Pico de Oro, Marqués de Comillas municipality.
- **Niger:** As of July 3, at least twenty-seven people were killed, and twenty-three others injured while more than ten thousand people were made homeless across thirty-one departments nationwide due to floods. Maradi region was worst affected, accounting for fifteen deaths and twelve injuries.
- **Nigeria:** On July 2, at least one person was killed, and two others were kidnapped after bandits attacked Yarima Quarters community, located in Dutsinma local government area (LGA) of Katsina state.
- **Nigeria:** On July 3, at least eleven people were killed, and several others injured after suspected bandits attacked Ayati, Ukum local government area (LGA), Benue state. The attack triggered protests in Sankera, with youths blocking several roads and vandalising buildings, to denounce

866-340-8569

info@wwfocus.com

www.focuspointintl.com



continued violence in the LGA which has been plagued by armed outlaws for years.

- **Nigeria:** On July 3, an unspecified number of people were kidnapped by armed gunmen from a bus at Okene, Kogi state, while on their way to Abuja.
- **Pakistan:** On July 1, at least nine militants were killed in two security operations in Khyber Pakhtunkhwa, including in the Tira area of Khyber district and Lakki Marwat district. Several weapons, ammunition and explosives were seized following the clashes.
- **Pakistan:** On July 1, at least three civilians were killed, and one other was injured after unidentified men opened gunfire and detonated explosives targeting a house in the Gabon area near Turbat, Kech district, Balochistan province.
- **Pakistan:** Since July 1, a section 144 order banning public gatherings of five or more people was imposed in Kohat district, Khyber Pakhtunkhwa province for 30 days, ahead of Muharram and Ashura. Pillion riding, (except for government workers part of Muharram arrangements), use of loudspeakers, standing on rooftops during processions, tinted glasses on vehicles, aerial firing and stay of strangers in hostels were also banned, among other restrictions.
- **Pakistan:** On July 3, at least five people, including a former senator, were killed when a roadside improvised explosive device (IED) detonated as people gathered for a political rally ahead of local elections, in Damadola, Bajaur district, Khyber Pakhtunkhwa province.
- **Pakistan:** On July 4, at least one militant was killed and eight other people, including paramilitary soldiers and civilians, were injured when gunfire erupted during a security operation in Darel district of Gilgit-Baltistan province.
- **Pakistan:** On July 5, at least two people were killed, and five others injured after roadside-planted explosives targeted a police vehicle near Jalala Bridge in Mardan, Mardan district, Khyber Pakhtunkhwa province.
- **Sudan:** On July 2, over one hundred people were kidnapped, and three commercial trucks were hijacked in the Kahwet El Laban area, some 12km (7.5 miles) southeast of Zalingei in Central Darfur, amid an uptick in kidnapping and looting of trucks between Zalingei and Nertiti.
- **Sudan:** On July 3, twelve people were killed and twenty others injured following renewed clashes between Sudanese Armed Forces (SAF) and Rapid Support Forces (RSF) in a livestock market in El Fasher, North Darfur. Clashes were also reported in Al-Meirameh in West Kordofan on the same day, while approximately sixty-five thousand people fled from the area.
- **Sudan:** On July 4, twenty-five displaced people died after their boat capsized on the Blue Nile River near the village of Abu Hajar, Sennar state.
- **Syria:** On July 1, at least four protesters were killed, and 20 others wounded by live ammunition fired by Turkish soldiers during violent rallies against alleged abuses by Turkish forces in Afrin, Jarabulus, Azaz, al-Bab, Jandairis, al-Ghandoura, al-Ghazawiya, Mare' and Bab al-Salam, Aleppo

866-340-8569

info@wwfocus.com

www.focuspointintl.com



governorate. Related rallies occurred in Idlib's Bab al-Hawa and Khirbet al-Jawz and Aleppo's Abin Semaan, al-Tuwamah, al-Abzmi and Atarib.

- **Syria:** On July 4, several rockets were launched by pro-Iran militias at the United States (US) military base in the Conoco oil field, Deir ez-Zor governorate, during late evening hours local time. There were no immediate reports of casualties or damage.
- **Ukraine:** On July 1, at least three people were killed, and nineteen others injured from Russian shelling in the oblasts of Donetsk, Dnipropetrovsk and Kherson, including Toretsk, Siversk, Shyroka Balka, Burhunka, Kreschenivka and Dnipro.
- **Ukraine:** On July 2, at least two people were killed, and nine others injured after Russian attacks targeted Nikopol in Dnipropetrovsk oblast. At least two other people were also killed by artillery shelling on the same day in Pokrovska in Nikopol raion.
- **Ukraine:** On July 3, five people were killed and thirty-four others injured after Russian airstrikes targeted several areas of Dnipro, Dnipropetrovsk oblast, during morning hours local time. A shopping centre as well as several schools and hospitals were damaged and multiple fires erupted across the city; emergency services remained underway.
- **Ukraine:** On July 5, Russian officials in Donetsk oblast indicated that at least two people were killed, and fifteen others wounded after Ukrainian shelling struck Volnovakha earlier in the day, while Ukrainian authorities indicated at least one person was killed and fourteen others were injured by Russian shelling in Komar.
- **Venezuela:** On July 2, aviation authorities indicated the suspension of flights to Carúpano's General Francisco Bermúdez Airport (CUP/SVCP) and Cumaná's Antonio José de Sucre Airport (CUM/SVCU) in Sucre state, Porlamar's Santiago Mariño International Airport (PMV/SVMG) in Nueva Esparta state and Los Roques Airport (LRV/SVRS) in Federal Dependencies until at least the end of the day, due to the approach of Hurricane Beryl.
- **Venezuela:** On July 2, multiple streets were flooded, and some houses destroyed in Cumanacoa, Montes municipality, Sucre state, after the Manzanares River overflowed amid the passage of Hurricane Beryl. Road access to Cumanacoa was closed from Puerto de La Madera in Cumaná, Sucre as well as from Monagas state.
- **Venezuela:** On July 3, at least three people were killed, four others were missing, around four hundred homes were destroyed, and overall, at least eight thousand households were affected across Cumanacoa, Sucre state, due to heavy rainfall and flooding triggered by the passage of Hurricane Beryl. At least eighty families were evacuated to a temporary shelter.

866-340-8569

info@wwfocus.com

www.focuspointintl.com



Please be aware System Risk Management has asked all members to prohibit travel to extreme risk countries and regions. Please reference memorandum from the Chancellor regarding procedures relating to international travel to be followed by all System members found at this link:

<http://www.tamus.edu/assets/files/safety/pdf/InternationalTraveltoHighRiskCountries.pdf>

Should you have any questions, please get in touch with me directly. Thank you.

Charles A. Longoria, CRM | Director
System Risk Management

Clongoria@tamus.edu 1262 TAMU | College Station, TX 77840-7896
Tel. 979.458.6237 | Cell 956.522.2881 | Fax 979.458.6247 | www.tamus.edu

866-340-8569



info@wwfocus.com



www.focuspointintl.com





COUNTRY TRAVEL ADVISORY LIST

Any travel to the below listed Extreme Risk countries or countries with an Extreme Risk region requires an International Travel Questionnaire submission to System Risk Management for review.



EXTREME RISK COUNTRIES

- | | |
|-----------------------------------|-----------------|
| 1) Afghanistan | 12) Mali |
| 2) Belarus | 13) North Korea |
| 3) Burkina Faso | 14) Russia |
| 4) Burma (Myanmar) | 15) Somalia |
| 5) Central African Republic (CAR) | 16) South Sudan |
| 6) Haiti | 17) Sudan |
| 7) Iran | 18) Syria |
| 8) Iraq | 19) Ukraine |
| 9) Israel | 20) Venezuela |
| 10) Lebanon | 21) Yemen |
| 11) Libya | |



HIGH RISK COUNTRIES

- | | |
|---|----------------------|
| 1) Algeria | 14) Honduras |
| 2) Azerbaijan | 15) India |
| 3) Burundi | 16) Kenya |
| 4) Cameroon | 17) Mauritania |
| 5) Chad | 18) Mexico |
| 6) Colombia | 19) Niger |
| 7) Congo (Republic of) | 20) Nigeria |
| 8) Cuba | 21) Pakistan |
| 9) Democratic Republic of the Congo (DRC) | 22) Panama |
| 10) Ecuador | 23) Papua New Guinea |
| 11) Egypt | 24) Philippines |
| 12) Eritrea | 25) Saudi Arabia |
| 13) Ethiopia | 26) Tunisia |
| | 27) Turkey |

866-340-8569



info@wwfocus.com



www.focuspointintl.com



COUNTRY TRAVEL ADVISORY DETAILS BY RISK LEVEL

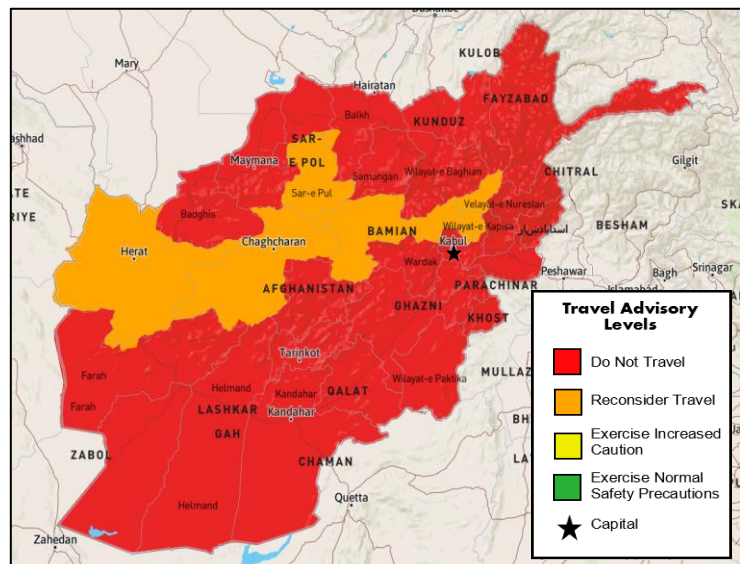


Afghanistan

Risk Level: **Extreme**

Country Overview:

It is advised to avoid all travel to Afghanistan. Travel is unsafe due to the unstable security situation involving armed conflict, terrorism, crime, and civil unrest. There is an extreme risk to personal safety and security because of widespread military operations, terrorism, and insurgent attacks, and high levels of kidnappings, hostage-taking, suicide bombings, landmines, and vehicle-borne or other improvised explosive devices. Due to extensive warlords and lawlessness, Afghanistan has long been beset by weak governance in many regions.



The Taliban launched a sweeping offensive against government forces, resulting in the complete collapse of the Afghan Government following the US-led withdrawal of foreign troops from the country. The U.S. negotiated a deal with the Taliban, which required the withdrawal of all foreign forces. The agreement ended the two decades of occupation by the U.S. and other foreign countries. With the Taliban's control of the country virtually unopposed, they have been swift to reverse reforms and are on a path of reinstating previously held policies.

The U.S. Embassy in Kabul suspended operations on August 31, 2021. While the U.S. government has withdrawn its personnel from Kabul, they continue to assist U.S. citizens and their families in Afghanistan from Doha, Qatar. It is advised to avoid traveling to Afghanistan due to the armed conflict.

866-340-8569

info@wwffocus.com

www.focuspointintl.com



Belarus

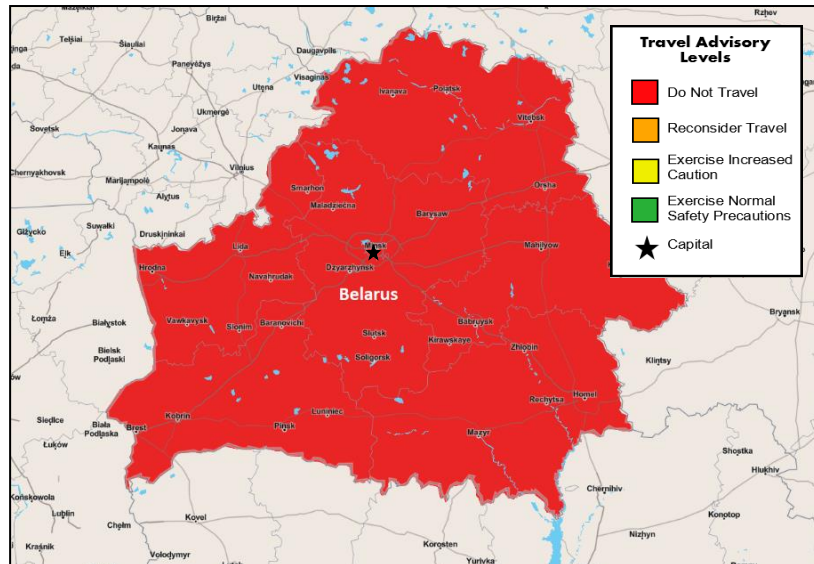
Risk Level: **Extreme**

Country Overview:

The security situation in Belarus is extremely dangerous due to ongoing Russian military operations in Belarus and Russian military operations in Ukraine. Travel to Belarus is not advised due to the risk of arbitrary enforcement of laws, the Russian military attack on Ukraine, and Russian military operations.

The U.S. Embassy in Belarus has closed, and all U.S. consular services have been suspended. All U.S. government employees have departed the country, and it is advised to exercise extreme caution and vigilance and avoid all public demonstrations. Belarusian authorities are known to detain individuals for suspicion of alleged affiliations with opposition parties or alleged participation in political protests. The Belarusian Government has arrested thousands of individuals, and Belarusian authorities have targeted independent and foreign media. It forced a commercial aircraft transiting Belarusian airspace to stop and land to arrest an opposition journalist. Belarus does not recognize dual nationality; authorities consider travelers with a Belarusian passport to be Belarusian.

The Belarusian Government supports Russia's attack on Ukraine, with Russian military operations taking place in Belarus and the country facilitating the launch of Russian missile strikes into Ukraine. There is a heightened threat of conflict ensuing within Belarusian borders. The situation remains unpredictable and could escalate without warning. The following areas are considered exceptionally high risk due to Russian and Belarusian military presence: Yelsk, Rechitsa, Mazyr, Gomel, Bresk, Baranovichi, and Asipovichy. Avoid all restricted areas and do not take photographs of any military activity or establishments, as it is illegal. The situation is calm throughout the rest of the country and Minsk but could change quickly and without warning. Some border crossings into Poland have been closed to vehicles, and more movement restrictions can be implemented at short notice, especially in the border regions.



866-340-8569

info@wwfocus.com

www.focuspointintl.com



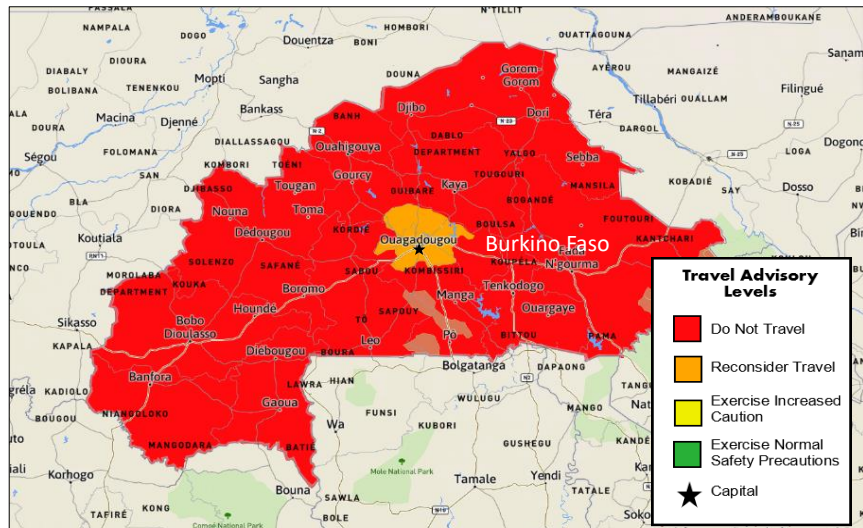
Burkina Faso

Risk Level: **Extreme**

Country Overview:

The security situation in Burkina Faso is hazardous, with some parts of the country being extremely unsafe. It is advised to avoid all travel to Burkina Faso due to terrorism and crime. There is a high risk to personal safety and security because of terrorist activity and common violent crimes.

Burkina Faso's military Government was dissolved in September 2022, with the constitution and transitional charter suspended.



This coup stems from the perceived failure of now-deposed leaders to suppress attacks from armed groups associated with ISIL (ISIS) and al-Qaeda. It is also the second coup in a year in the West African nation following the overthrowing of Roch Kabore in January 2022. General staff within the Burkina Faso army implied that the coup resulted from internal friction within the military and that dialogue between the conflicting parties was ongoing.

Westerners have been abducted and killed in Burkina Faso and the greater Sahel region. Kidnapping is still a serious concern throughout Burkina Faso, especially in Ouagadougou and the larger Sahel region. Additionally, there is a chance that terrorist organizations could enter Burkina Faso through the northern border with Niger and the border from Mali to carry out kidnapping attacks, particularly in Ouagadougou.

It is advised to avoid Soum in the north and the southeast on the border with Benin as these are active military zones. Civilians found in these areas risk getting caught up in ongoing military operations.

866-340-8569

info@wwfocus.com

www.focuspointintl.com



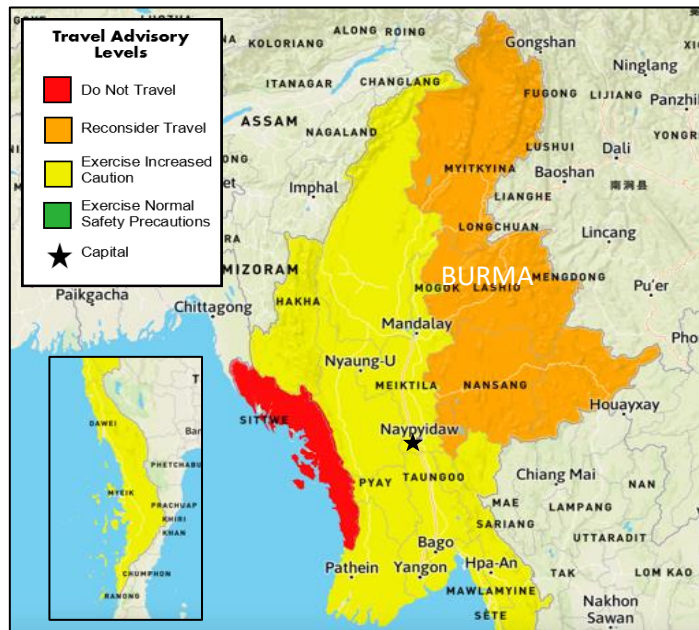
Burma (Myanmar)

Risk Level: **Extreme**

Country Overview:

The security situation in some parts of Myanmar is hazardous, with specific areas extremely unsafe. Due to civil unrest and armed conflict, it is advised not to travel to Myanmar. There is a high risk to personal safety and security because of fighting between the Myanmar military and various ethnic armed groups and militia forces.

Avoiding travel to Rakhine State due to civil unrest and armed conflict is advised. Trip to Chin, Kayin, Kachin, and Shan State townships is not recommended due to civil unrest and armed conflict. Travelers should avoid areas bordering China, Laos, Thailand, Bangladesh, and India.



On February 1, 2021, the former State Counsellor of Myanmar, Aung San Suu Kyi, was detained by the Myanmar military and other senior figures from the ruling party over unsubstantiated election fraud claims and subsequently sentenced to 33 years in prison. Since the coup, pro and anti-military rallies have been held in Yangon and Mandalay daily and often escalate into violence, with security forces regularly firing live ammunition at protestors. Following the coup, rebel groups in the north have banded together to combat the military junta, taking control of towns and territories. The Myanmar armed forces have failed to counter the rebels, despite having superior equipment and air support. The conflict has seen artillery fire hit Chinese border cities, injuring Chinese citizens. Travelers are advised to avoid travel to Myanmar.

It is advised to avoid all but essential travel to the east of the Yangon-Mandalay Expressway in the Bago region and Rakhine state.

A state of emergency remains in place across Myanmar. The security situation in Myanmar is unpredictable and liable to change without notice, and access to any area of Myanmar can be restricted by the authorities at any time. Current townships under martial law are Hlaing Thaya, Shwe Pyithar, North Okkalapa, North Dagon, South Dagon, and Dagon Seakkan, but these are subject to change.

866-340-8569

info@wwffocus.com

www.focuspointintl.com

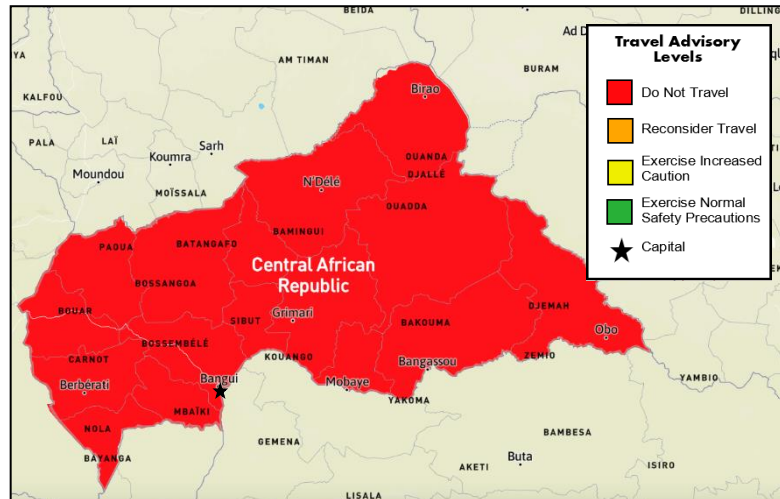


Central African Republic

Risk Level: **Extreme**

Country Overview:

The security situation in the Central African Republic (CAR) is perilous, and all travel is strongly advised against due to civil unrest, crime, and extreme risk to personal safety. Sectarian violence by armed groups, along with everyday criminal activities, poses significant threats such as armed robbery, aggravated battery, homicide, looting, kidnapping, and carjacking incidents, particularly outside the capital.



Although there are no specific threats targeting U.S. citizens, civil unrest, demonstrations, and post-election violence remain ongoing risks. The likelihood of violent attacks, including carjackings, is high with little notice. Armed conflict persists in the north and east; government services are limited outside Bangui. Poor road conditions, especially in the rainy season; few paved roads outside Bangui. Armed patrols by various groups, including government forces and militias.

Exercise caution in outlying areas where theft and robbery are common, often perpetrated by armed gangs. Take precautions by seeking professional security advice and using trusted transport to enhance your safety.

For essential travel to rural areas, it is recommended to avoid traveling after dark and move only in a convoy with a security escort. A national curfew is in place from 10 p.m. to 5 a.m., and compliance with government instructions is crucial. Additionally, there are reports of a hemorrhagic fever outbreak in CAR, resulting in four deaths, particularly in Kabo, Ouham-Fafa Prefecture.

Areas bordering the Democratic Republic of Congo are at risk of Ebola outbreaks, warranting increased caution when traveling to these regions.

Except for the capital, Bangui, the FCDO continues to warn against traveling to any part of the Central African Republic, including the regions of Bimbo, Begoua, and Coline. Travel to Bangui, especially Bangui M'Poko International Airport, is currently discouraged by FCDO unless necessary.

866-340-8569

info@wwffocus.com

www.focuspointintl.com



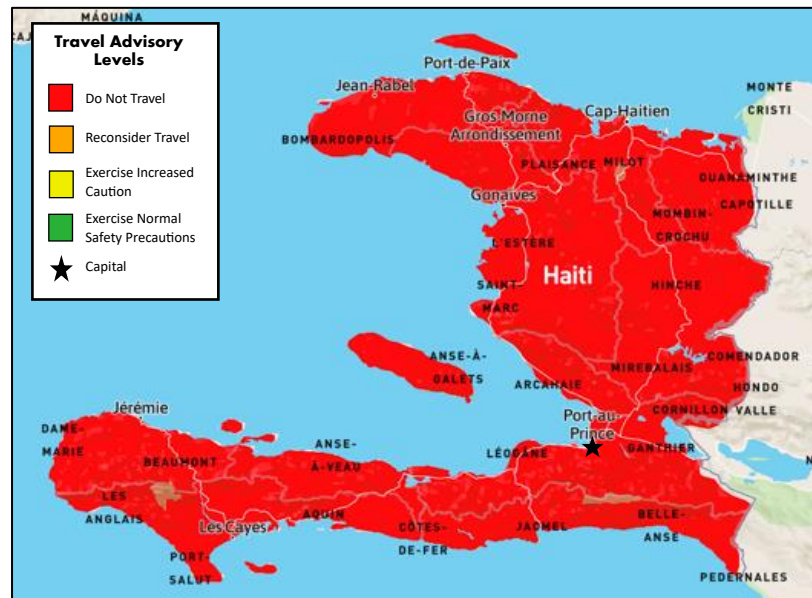
Haiti

Risk Level: **Extreme**

Country Overview:

The security situation in Haiti is unstable and extremely dangerous. Avoiding travel to Haiti is advised due to civil unrest and crime. There is a high risk to personal safety and security due to the widespread violent and unpredictable demonstrations in Port-au-Prince and elsewhere in the country.

Severe fuel shortages plague the country, impacting essential service provision countrywide. Medical services, electricity, and communications have been heavily affected.



Gang conflict has intensified in the capital, with heavily armed gangs seizing city sections from government authority, attacking government buildings, and calling for the resignation of the prime minister. Fritz Belizaire has been named the new Prime Minister by the transitional council that was formed following the resignation of former Prime Minister Ariel Henry. Belizaire is a controversial choice for the role and his appointment has sowed divisions within the transitional council. The proposed UN-backed Kenyan police mission to Haiti is still expected to happen, however, it is on hold due to the pending change in the Haitian government.

Kidnappings in the city are rising as gangs target people going to and from work. Incidents of criminal kidnap can occur in any part of the country, at any time. Criminal groups often use firearms and extreme violence to kidnap victims. The country is also experiencing an acute food shortage, with nearly half the country's population facing hunger and a recent surge in cholera.

While the land border between Haiti and the Dominican Republic remains shut, the Dominican Government has declared the resumption of air travel between the two countries on October 30th. The situation concerning the border can change suddenly, and it is advisable to monitor local media for any updates.

It is advised to avoid all travel to Haiti, mainly to avoid the Bel Air, Carrefour, Cité Soleil, and Martissant neighborhoods in Port-au-Prince. Do not drive through roadblocks; if you encounter one, turn around and get to a safe area. Travelers are sometimes followed, violently attacked, and robbed shortly after leaving Port-au-Prince. The U.S. Embassy requires personnel to use official transportation to and from the airport.

866-340-8569

info@wwffocus.com

www.focuspointintl.com

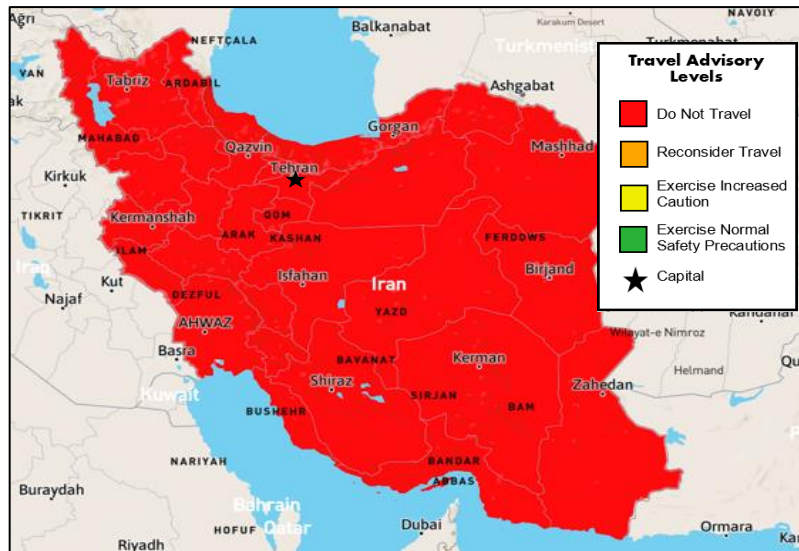


Iran

Risk Level: **Extreme**

Country Overview:

The security situation in Iran is hazardous, with specific parts of the country being extremely unsafe. Travel to Iran is not advised due to arbitrary arrest and detention risk. Iran experienced one of the highest incidences of COVID-19 in the Middle East. The risk of community transmission remains high, and extreme caution is advised. Iran has begun lifting its lockdown and resuming business activity.



U.S. citizens in Iran face the risk of kidnapping, arrest, and unjust detention on various charges, particularly dual national Iranian Americans. These charges include espionage and posing a threat to national security. Iranian authorities often delay consular access and consistently deny it to dual U.S.-Iranian citizens. The U.S. government lacks diplomatic relations with Iran, limiting its ability to provide emergency services. Foreign nationals in Iran are urged to carefully consider the risks, as detention could lead to prolonged imprisonment.

On April 1, an Israeli air strike hit the consulate in Iran resulting in the death of two guards. Tensions between Israel and Iran have since escalated and Iran has expressed its readiness in a possible retaliatory attack on Israel.

Recently, Pakistan conducted military strikes on Iran in response to Iranian air raids in Balochistan, escalating tensions between the two neighbors. Pakistan claimed the strikes were a "highly coordinated" intelligence-based operation against armed groups in Iran's Sistan-Baluchestan province, citing "impending large-scale terrorist activities." Iran reported at least nine casualties and summoned the senior-most Pakistani diplomat for explanations. The move followed Iranian air raids against Jaish al-Adl in Pakistan, resulting in casualties and drawing Pakistan's condemnation.

Travelers are advised to avoid border areas near Iraq, Afghanistan, and Pakistan, including Sistan and Baluchistan province and regions east of Bam in Kerman province, due to the risk of violent unrest and cross-border clashes. Avoid lingering near military checkpoints and report suspicious activity. For extended travel between cities, it's recommended to hire a reputable local guide.

866-340-8569

info@wwffocus.com

www.focuspointintl.com



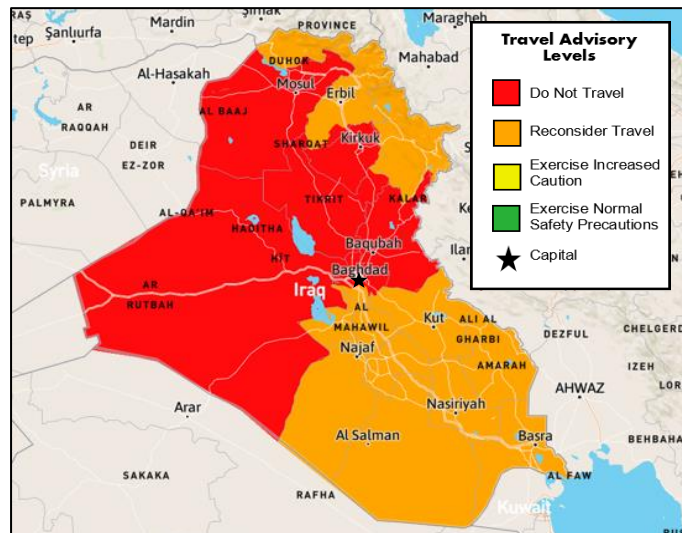
Iraq

Risk Level: **Extreme**

Country Overview:

The security situation in Iraq is hazardous. It is advised to avoid traveling to Iraq. Travel is unsafe due to terrorism, kidnapping, and armed conflict. There is also an extreme risk to personal safety and security because of active insurgent and terrorist groups, sectarian militias, and high levels of violence, including kidnappings, suicide bombings, and vehicle-borne or improvised explosive devices (IEDs).

Iraq remains subject to regional tensions. Militia groups opposed to the Western presence in Iraq continue to threaten Western interests in Iraq, including through attacks on Global Coalition military bases, diplomatic premises, and foreign nationals. The security situation remains uncertain and could deteriorate with little warning. Protests regularly take place in and around the International Zone in Baghdad. Protests can, and sometimes do, escalate into violence. You should avoid any rallies, marches, or processions, and follow the instructions of local authorities.



Iran's Islamic Revolutionary Guard Corps (IRGC) have launched missile attacks into Iraq, under the claiming of security and counterterrorism concerns. The strikes mark a departure from Iran's previous efforts to avoid regional tension.

Iraq faces regional tensions, with some areas experiencing sporadic attacks by artillery, drones, and rockets. There is an ongoing threat to Western interests. Travelers are advised to stay vigilant, implement strong security measures, have contingency plans, and stay informed about the latest developments through the media and travel advisories. Regularly reviewing and updating security arrangements is recommended.

U.S. citizens are advised to avoid areas near the Turkish, Syrian, and Iranian borders due to continuous military operations against insurgent groups. There is ongoing armed conflict at the Syrian border, and traveling from Iraq to Syria for armed conflict is strongly discouraged. Engaging in such activities poses extreme personal risks, including kidnapping, injury, or death, as well as legal risks such as arrest, fines, and expulsion. The Kurdistan Regional Government has warned of prison sentences of up to ten years for those illegally crossing the border. Supporting designated terrorist organizations is a crime, carrying penalties such as prison time and hefty fines in the United States.

866-340-8569

info@wwffocus.com

www.focuspointintl.com



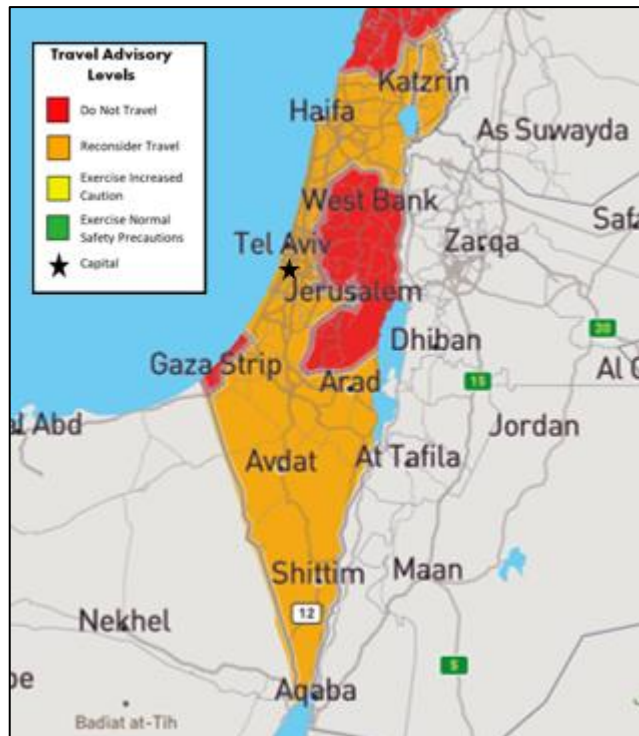
Israel

Risk Level: **Extreme**

Country Overview:

The security situation in Israel, the West Bank, and Gaza is unstable, and certain areas are incredibly unsafe. Travelers to Israel or the Palestinian Territories are advised to exercise increased caution due to terrorism, civil unrest, and armed conflict. There is a moderate risk to personal safety and security because of clashes between Palestinians and Israeli authorities.

On October 7, the Hamas militant group launched a surprise attack on southern Israel in the areas surrounding Gaza. Thousands of rockets were launched, combined with a ground attack from Gaza. The militants broke through the Gaza border fence and attacked nearby towns, cities, kibbutzim, and a music festival. At least 1,300 Israelis were killed in the attack, with a suspected 150 captured and taken into Gaza as hostages. Israel responded with a full military offensive into the Gaza Strip, with the stated aim of eliminating Hamas. Estimates put Gazan casualties at over 33000.



Hezbollah, a terrorist group operating in Lebanon, conducts sporadic rocket attacks across Israel's northern border. Israel has begun a military build-up along the border to prepare for possible Hezbollah attacks.

Travelers near the Gaza border are advised to leave the area as soon as possible; otherwise, avoid the area. Travelers in Israel are advised to leave as soon as possible. The security situation is expected to deteriorate as the conflict continues.

Terrorist attacks in Israel and Occupied Palestinian Territories are very likely and are indiscriminate to place or person. On April 1, an airstrike from Israel struck the consulate in Iran, which resulted in 2 fatalities. Iran has vowed to retaliate with an attack of their own and the Israeli government expressed the possibility of defending itself against an attack from Iran should the need arise.

Always exercise increased caution. These attacks could be indiscriminate and occur in places frequently visited by foreigners, including tourist sites, public transport hubs, and busy public spaces.

866-340-8569

info@wwfocus.com

www.focuspointintl.com



Lebanon

Risk Level: **Extreme**

Country Overview:

The security situation in Lebanon is hazardous, with some parts of the country being extremely unsafe. It is advised to avoid all travel to Lebanon due to the unpredictable security situation related to rocket, missile, and artillery exchanges between Israel and Hezbollah or other armed militant factions. There is a high risk to personal safety and security because of terrorist activity, armed clashes, kidnapping, and outbreaks of violence near Lebanon's borders with Syria and Israel.

In January 2024, Deputy Hamas Chief Saleh al-Arouri was killed in a suspected Israeli drone strike in Beirut's southern suburbs of Dahiyeh, risking the expansion of hostilities amidst the Israel/Gaza war.

The situation in Lebanon is rapidly changing, and it has the potential to deteriorate without much warning. There are ongoing exchanges of mortar and artillery, along with airstrikes near the border with Israel in South Lebanon. Tensions are running high, and events might escalate suddenly, impacting the availability of exit routes from Lebanon. Travelers currently in Lebanon are encouraged to leave as soon as possible while commercial travel options are still open.

Travelers in Lebanon should keep clear of demonstrations and exert caution if in the proximity of any large gatherings or protests. It is advised to avoid all travel to Palestinian refugee camps, the Hermel Area, including Arsal, Ras Baalbek, Qaa, Laboué, and Nahlé, and within 5km of the border with Syria and Israel due to the potential for armed conflict.

It is further advised to limit all but essential travel to all other territories of Akkar district between 3 miles (5km) from the Syrian border and the Halba, Aabdeh, and Qoubaiyat highway, including the towns of Halba and Qoubaiyat; the city of Tripoli; the village of Brital, and the area around it up to 3 miles (5km) from the Syrian border, and south of Nahlé town. This excludes Baalbek town; the towns of Rachaiya, Hasbaiya, and Kham, and the area between these towns up to 3 miles (5km) from the Syrian border, within 500m of the Ain el Hilweh Palestinian refugee camp in Saida (Sidon); and south of the Litani River except the main Naqoura-Tyre-Saida (Sidon)-Beirut highway and all districts to the west of it. The Lebanese Government cannot assure the protection of U.S. citizens against sudden eruptions of violence. Neighborhood, family, or sectarian disputes can spiral out of control quickly and, in turn, can lead to gunfire or other violence with no apparent warning.



866-340-8569

info@wwffocus.com

www.focuspointintl.com

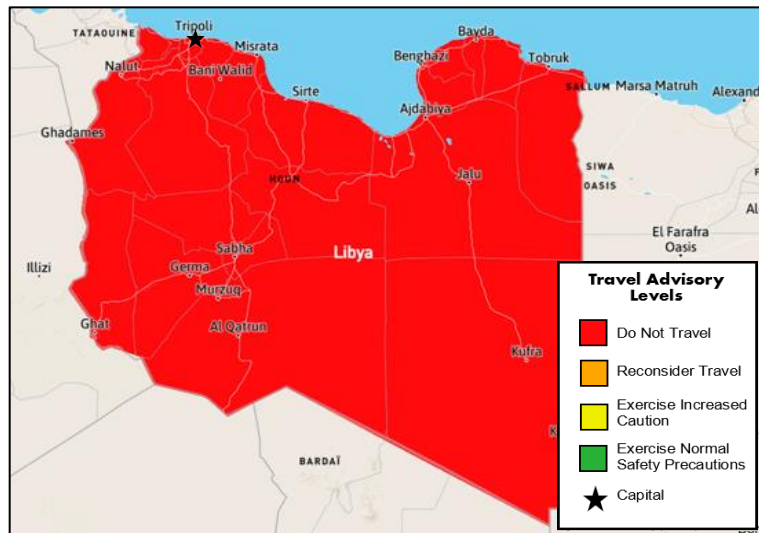


Libya

Risk Level: **Extreme**

Country Overview:

The security situation in Libya is hazardous. It is advised to avoid travel to Libya. Travel is unsafe due to armed conflict, terrorism, civil unrest, and crime. There is an extreme risk to personal safety and security because of high levels of terrorist activity and corruption, including kidnapping for ransom, suicide bombings, and vehicle-borne or other improvised explosive devices (IEDs). Terrorist groups continue plotting attacks in Libya. Violent extremist activity in Libya remains high, and extremist groups have made threats against U.S. government officials and citizens. Terrorists may attack without warning, targeting tourist locations, hotels, transportation hubs, markets/shopping malls, and government facilities.



The 2021 Libyan election is effectively on permanent hold as no significant political actor in the country shows any interest in preparing for an election that will likely see them lose power. Recent protests in the country have signaled a growing dissatisfaction amongst the electorate for the current defacto rulers: internationally recognized Prime Minister Hamid Dbeibah and renegade militant commander Khalifa Haftar. Civil unrest and outbreaks of violence between armed groups occur with little warning.

Foreign forces and mercenaries remain active in Libya. The Interim Government of National Unity has limited control over security throughout the country. The ongoing political instability has resulted in security incidents, road and airport closures, and oil blockades.

Tripoli and other cities, such as Surman, Al-Jufra, Misrata, Ajdabiya, Benghazi, Sabha, and Derna, have witnessed fighting among armed groups and terrorist attacks. Hotels and airports frequented by Westerners have been the targets of these attacks. Even demonstrations intended to be peaceful can turn confrontational and escalate into violence. Militia or armed groups sometimes detain travelers for arbitrary reasons, do not grant detainees access to a lawyer or legal process, and do not allow detainees to inform others of their status. The U.S. government cannot provide emergency or routine.

866-340-8569

info@wwffocus.com

www.focuspointintl.com



Mali

Risk Level: **Extreme**

Country Overview:

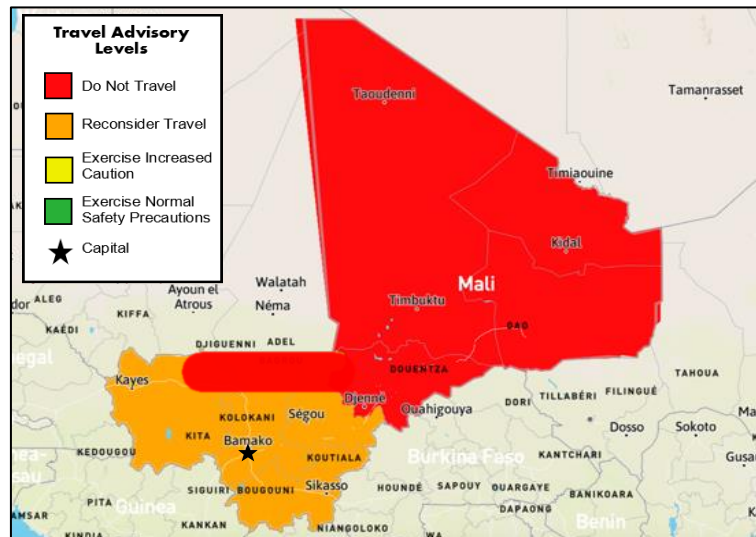
The security situation in Mali is hazardous. It is advised to avoid traveling to Mali. Travel is unsafe due to political instability, crime, and terrorism. There is an extreme risk to personal safety and security because of terrorist activity and violent crimes such as kidnapping and armed robbery.

In Mali, violent crimes such as kidnapping and armed robbery are common. Violent crime is prevalent during seasonal events and local holidays, especially in Mali's southern regions and Bamako suburbs. It is common to see random police checkpoints and roadblocks at night throughout the country. Armed groups and terrorists continually plague Mali with kidnappings and attacks without warning. They often target nightclubs, restaurants, places of worship, hotels, Western diplomatic missions, and other locations that foreigners frequently visit.

Terrorist attacks are likely to be carried out in Mali. Although kidnapping is particularly prevalent in the northern and central parts of the country, kidnappings occur elsewhere across Mali.

There is an extreme risk to personal safety and security to Westerners in Bamako as the Al-Qaeda-affiliated terrorist group, Jama'at Nusrat al-Islam wal-Muslimin (JNIM), publicly stated their intention to conduct attacks in Bamako. The U.S. government has ordered all U.S. government employees and families to depart the country due to the increase in terrorist attacks carried out in areas frequented by Westerners.

In Mali, thousands of foreign troops are leaving due to escalating violence, expanding Russian influence, and a severe humanitarian catastrophe. Since their initial deployment a decade ago, thousands of French troops and U.N. peacekeepers have failed to stop large portions of Mali from under the control of an Islamic extremist insurgency affiliated with organizations like al-Qaida and the Islamic State with the current Government demanding all troops to leave.



866-340-8569

info@wwfocus.com

www.focuspointintl.com



North Korea

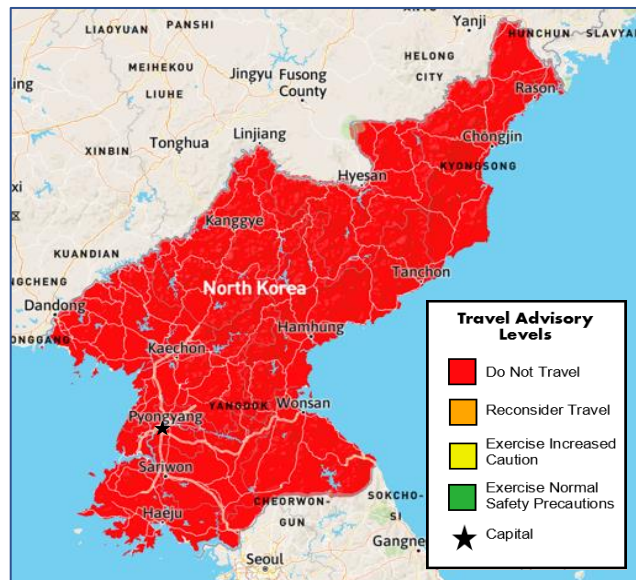
Risk Level: **Extreme**

Country Overview:

It is advised to avoid all travel to North Korea. The security situation remains volatile on the Korean peninsula, and North Korea's political tensions can change with little notice and no warning and pose an extreme risk to visitors.

Travel is unsafe due to the severe risk of arrest and long-term detention. In addition, U.S. passports are only valid for travel to, in, or through North Korea with specific validation from the U.S. Department of State. Unique assurances are granted only in limited circumstances.

Kim Jong Un revealed new plans for his country's military, which point to more intense weapons testing and heightened regional tensions in the coming year.



The U.S. government cannot provide emergency services to U.S. citizens in North Korea as it does not have diplomatic or consular relations with North Korea. Sweden serves as the protecting power for the United States in North Korea, providing limited emergency services. The North Korean Government routinely delays or denies Swedish officials access to detained U.S. citizens.

866-340-8569

info@wwfocus.com

www.focuspointintl.com



Russia

Risk Level: **Extreme**

Country Overview:

In some parts of Russia, security is hazardous, with specific areas extremely unsafe. It is advised to exercise increased caution in Russia due to terrorism, harassment, and the arbitrary enforcement of local laws.

There is an overall moderate risk to personal safety and security throughout the rest of the



country due to terrorist groups continuing to plot attacks. On March 22, 2024, four gunmen stormed the Crocus City Concert Hall in Krasnogorsk near Moscow and opened fire at patrons before setting the building ablaze resulting in over 137 people dead and several injured. Additionally, in June 2024 at least 20 people were killed after armed assailants attacked synagogues, churches and police in Dagestan. Travelers should be vigilant when in popular and crowded areas. Additional counter-terrorism procedures and restrictions across the country are to be expected.

It is advised to avoid all travel to parts of the North Caucasus region (including the Mount Elbrus area), such as Chechnya, Dagestan, Ingushetia, North Ossetia, and the southeast part of Stavropol bordering Chechnya, Kabardino-Balkaria, and Karachay-Cherkessia; and within 10km of the border with the Ukrainian Donetsk and Lugansk Oblasts.

Russia enforces special restrictions on dual U.S.-Russian nationals. It may refuse to acknowledge dual U.S.-Russia nationals' U.S. citizenship, including denying U.S. consular assistance to detained dual citizens and preventing their departure from Russia. Due to the Russian government-imposed reduction in U.S. diplomatic personnel, the U.S. government may delay providing services to U.S. citizens.

Recently, Finland has extended the closure of its road borders with Russia until further notice, with its maritime borders being closed off until April 15, responding to what it perceives as an orchestrated influx of asylum seekers from Russia. Moscow denies the claim. The closure, initially imposed last year, was briefly lifted in December, resulting in over 300 asylum seekers entering from Russia within two days and prompting the extended closure.

Russia's full-scale attack on Ukraine is still ongoing. As a result, Western nations have placed severe economic sanctions against Moscow with far-reaching effects on those in the country. Russian forces have faced setbacks after making initial gains, occupying nearly a fifth of Ukraine. Ukraine has begun a counteroffensive to retake Russian-occupied territory; however, progress has been slow.

866-340-8569

info@wwfocus.com

www.focuspointintl.com



Somalia

Risk Level: **Extreme**

Country Overview:

It is advised to avoid traveling to Somalia. The security situation in Somalia is hazardous. Travel is unsafe due to crime, terrorism, and piracy at the hands of armed militia. There is an extreme risk to personal safety and security because of terrorist activity and violent crime, such as kidnapping and murder, which are common throughout the country.

Al-Shabaab has lost control of a significant portion of its southern and central Somalia territory due to the success of the Africa Union Mission in Somalia (AMISOM)-led Operation Indian Ocean offensive.

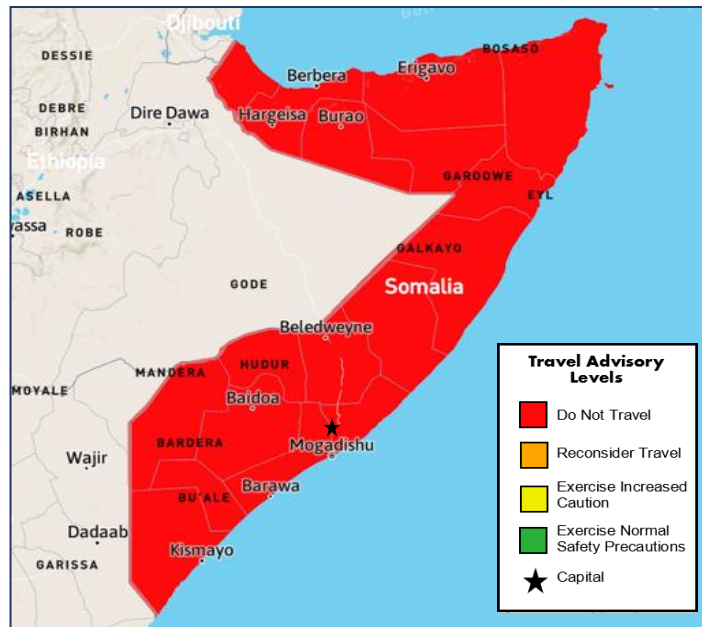
There is a current outbreak of Polio that has the potential to impact travelers.

Medical facilities across Somalia have limited capacity and are often non-existent in rural areas.

Terrorists are very likely to try to carry out attacks in Somalia. There is a high threat of kidnap throughout the country. Several Western nationals, including British nationals, have been kidnapped in Somalia and some have been killed. Terrorist groups have made threats against Westerners and those working for Western organizations. There is a constant threat of terrorist attack in Mogadishu and terrorists continue to plan attacks against Westerners in the rest of Somalia, including Somaliland. Terrorist attacks could be indiscriminate, including in crowded places, high-profile events, events involving government officials, and places visited by foreigners. Due to their use by government officials, hotels are considered legitimate targets by terrorist groups.

Terrorists continue to plot kidnappings, bombings, and other attacks in Somalia. They may conduct attacks with little or no warning, targeting airports and seaports, government buildings, hotels, restaurants, shopping areas, and other areas where large crowds gather and Westerners frequent, as well as Government, military, and Western convoys. Attack methods include car bombs, suicide bombers, individual attackers, and mortar fire.

The U.S. government can only provide emergency services to U.S. citizens in Somalia without a permanent consular presence.



866-340-8569

info@wwffocus.com

www.focuspointintl.com

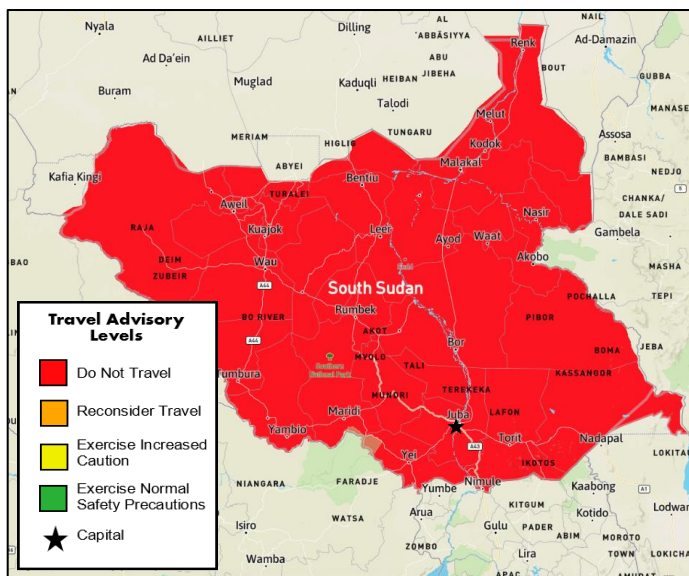


South Sudan

Risk Level: **Extreme**

Country Overview:

The security situation in South Sudan is hazardous. Travel is unsafe due to crime and armed conflict. There is an extreme risk to personal safety and security because of armed clashes, border disputes, ethnic violence, and corruption, including carjacking, shootings, ambushes, assaults, robberies, and kidnappings. Travelers to South Sudan should ensure that they have comprehensive contingency plans that do not depend on support from the Embassy. U.S. government personnel in South Sudan are under strict curfew; they require armored vehicles for nearly all movements, and official travel outside Juba is limited.



Foreign nationals have been the victims of rape, sexual assault, armed robberies, and other violent crimes. Armed conflict is ongoing throughout the country and includes fighting between various political and ethnic groups, and weapons are readily available to the population. Journalist work is also very hazardous and illegal without the proper documentation.

It is advised to avoid all travel to South Sudan.

866-340-8569



info@wwfocus.com



www.focuspointintl.com





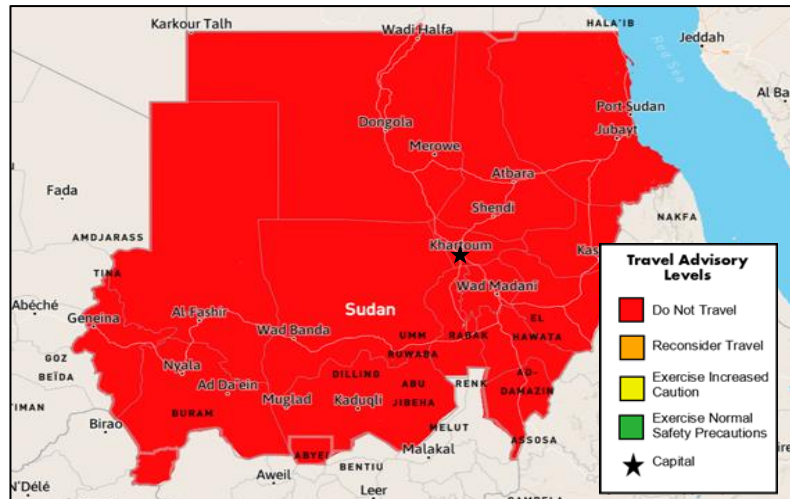
Sudan

Risk Level: **Extreme**

Country Overview:

The security situation in Sudan is hazardous. Travel is unsafe due to crime, terrorism, kidnapping, and armed conflict. Armed conflict and criminal activity are mainly present in contested regions, although kidnappings, armed robberies, and carjacking occur in all parts of the country.

Following months of intense protests, Sudan's journey to democratic rule has been fragile since the April 2019 military ouster of the long-time ruler Omar al-Bashir. A power-sharing agreement was established to form a government involving the military, civilian representatives, and protest groups. However, a second military coup on October 25, 2021, reignited the ongoing political crisis. An agreement in November to reinstate a civilian government led to the reinstatement of the Prime Minister, who resigned in January 2022. Since then, ongoing efforts and talks have been made to resolve the crisis, but the political situation remains fragile.



Fighting between the military and paramilitary forces erupted in Khartoum on April 15, 2023. The conflict has caused significant damage to the city, and the violence has quickly spread throughout the country, resulting in civilian casualties. The security situation is unstable, with reports of looting, sexual assaults, and attacks on foreigners and international organization employees.

Access to essential services, including hospitals, food, water, medication, and fuel, has been disrupted, and the telecommunication network could be more reliable. Commercial flights to all airports have been halted, and Chad has closed its border with Sudan. Overland travel is highly hazardous. Khartoum International Airport is closed. The only functional civilian airport operating international flights is Port Sudan Airport.

Crimes, such as kidnapping, armed robbery, home invasion, and carjacking, happen regularly and are more frequent outside of Khartoum. Members of known terrorist groups and individuals sympathetic to these groups in Sudan could attack with little to no warning, targeting foreign and local government facilities and areas frequented by Westerners. Demonstrations can occur with no warning and is more likely to occur due to the Israel-Gaza war. Avoiding all travel within 20km of the border with Eritrea, Ethiopia, and the al-Fashaga region is advised.

Sudan is experiencing an outbreak of Dengue fever. Dengue fever is a mosquito-borne illness that spreads close to still water sources. As of January, there were 844 confirmed cases and 5,358 suspected cases of the disease, according to the Sudanese Health Ministry.

866-340-8569

info@wwffocus.com

www.focuspointintl.com

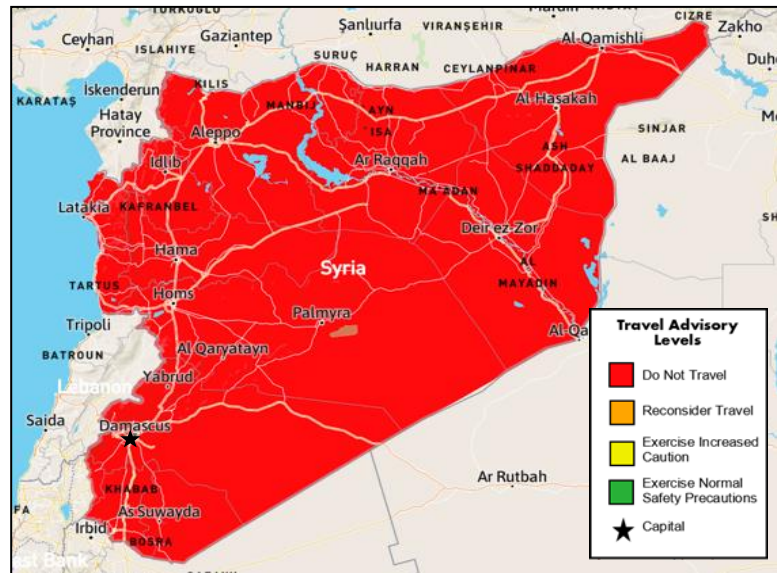


Syria

Risk Level: **Extreme**

Country Overview:

In Syria, the security situation is hazardous. It is advised to avoid traveling to Syria. Travel is unsafe due to armed conflict, terrorism, and civil unrest. There is an extreme risk to personal safety and security because no part of Syria is considered safe from violence. Widespread military operations involving chemical warfare, shelling, and aerial bombardment have significantly raised the risk of death or severe injury. Terrorists are very likely to try to carry out attacks in Syria, as continued attacks across Syria, including major cities have left large numbers of people dead or injured.



In northern Syria, Turkish air attacks threaten United States military personnel, and the escalating situation threatens years of progress against ISIL (ISIS). Security status and cases throughout Syria are fragile and can escalate into deadly armed clashes without warning.

In 2012, the U.S. Embassy in Damascus suspended its operations. Currently, the Czech Republic provides protection power for the United States in Syria. Consular services that the Czech Republic provides to U.S. citizens are minimal (including accepting applications for U.S. passports and U.S. Consular Reports of Birth Abroad and notarial services). The U.S. government cannot provide any emergency services to U.S. citizens in Syria. U.S. citizens who seek consular services should try to leave the country and contact a U.S. embassy or consulate in a neighboring country quickly and safely.

Long-standing conflict with neighboring states and porous borders has created a complex and unpredictable security environment. There is a continuous risk of kidnapping and detention of U.S. citizens and Westerners throughout the country. U.S. citizens remain a target, with many abductions since mid-2012 and as recently as early 2019. U.S. citizens are targets of arbitrary kidnapping and detention by the Syrian Government and do not have access to medical attention or due process while in custody. The Government detention centers are unsanitary facilities where inhumane, cruel, and degrading treatment of detainees has been documented, as well as torture and extrajudicial killings. Several international commercial flights from and to Damascus International Airport are now operational. It is advised to avoid all travel to Syria.

866-340-8569

info@wwwfocus.com

www.focuspointintl.com



Ukraine

Risk Level: **Extreme**

Country Overview:

It is advised to avoid all travel to Ukraine. The security situation in eastern Ukraine is dangerous, with some areas considered highly unsafe. Due to Russia's invasion, there is a heightened risk to personal safety and security throughout Ukraine.

On February 24, 2022, Russia invaded Ukraine with ground and air attacks on major Ukrainian cities, including its capital, Kyiv. Russia's military moved into Ukraine from Crimea, Donetsk, and Luhansk territories and across the Russian Northern border and neighboring northern country Belarus. Ukrainian forces have begun a long-awaited offensive against captured territories; however, progress has been slow.



Do not travel to Crimea as the international community, including the United States and Ukraine, does not recognize Russia's annexation. There is continuing abuse against foreigners and the local population by the occupation authorities in Crimea, particularly against those who challenge their influence on the peninsula.

There have been reports of abuse and arbitrary imprisonment by Russian Occupation authorities, targeting both foreigners and residents. Individuals who oppose Russia's occupation of the peninsula are primary targets.

Travelers should avoid all travel to Ukraine due to military activity and to leave the country if already there. Ukrainian airspace is closed, and most evacuations are via its western borders into neighboring countries. Martial law remains in place, and travelers should follow the instructions and advice of the Ukrainian authorities.

866-340-8569

info@wwfocus.com

www.focuspointintl.com



Venezuela

Risk Level: **Extreme**

Country Overview:

The security situation in Venezuela is hazardous. Travel is unsafe due to ongoing political instability, crime, poor health infrastructure, and arbitrary arrest and detention of foreign nationals. Political marches and demonstrations, which occasionally become violent, are frequent in all areas, and crimes like homicide, armed robbery, kidnapping, drug trafficking, and carjacking are common.

Demonstrations typically elicit a strong police and security force response, including tear gas, pepper spray, water cannons, and rubber bullets against participants, and occasionally devolve into looting and vandalism. The United Nations Human Rights Council's Fact-Finding Mission reported that the regime has engaged in thousands of extrajudicial killings.



Some of Venezuela's land and sea borders are subject to closure. U.S. citizens residing or traveling in Venezuela are advised to depart the country. Consular access to detained U.S. citizens is severely restricted, and the U.S. government is unlikely to be granted access. Security forces have arbitrarily detained U.S. citizens for long periods. Venezuelan authorities may not notify the U.S. government of the detention of a U.S. citizen.

Since March 11, 2019, the U.S. Department of State has suspended all operations at the U.S. Embassy in Caracas and has withdrawn all diplomatic personnel from Venezuela. The U.S. has suspended all nonstop flights between Venezuela and the U.S. until further notice.

There are shortages of food, electricity, water, medicine, and medical supplies throughout much of Venezuela, and avoiding non-essential travel is advised. Formal tourism industry infrastructure needs to be implemented, and emergency consular support is minimal or may be unavailable altogether. Travelers are advised to avoid the area within a 50-mile radius along the Venezuelan-Colombian border.

866-340-8569

info@wwffocus.com

www.focuspointintl.com

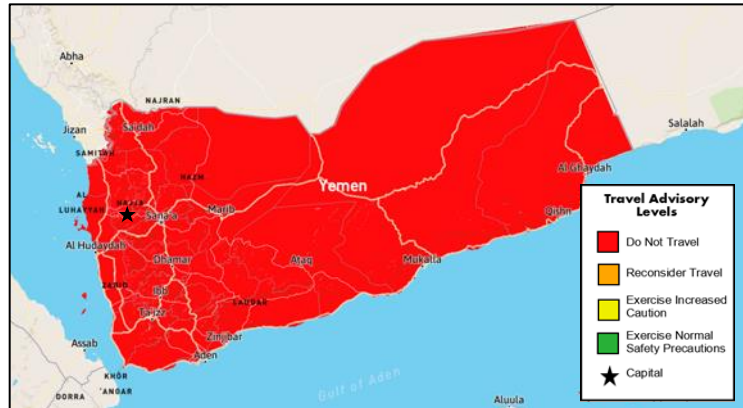


Yemen

Risk Level: **Extreme**

Country Overview:

The security situation in Yemen is hazardous. Travel is unsafe due to armed conflict, terrorism, and civil unrest. There is an extreme risk to health and personal safety because of ongoing military conflict, heightened terrorist activity, kidnappings for ransom, and unlawful detentions by rebel groups. Employees of Western organizations may be targeted for attack or abduction. Military conflict has caused significant destruction of infrastructure, housing, medical facilities, schools, and power and water utilities. This limits the availability of electricity, clean water, and medical care.



The presence of military-grade weapons poses a significant threat to visitors to the country, as they may be used by criminals, terrorists, or security forces. Crime, including carjacking, robbery, and extortion, is pervasive across the country. Tribal conflicts over land frequently escalate into violence, and various militias, including the Houthis, operate extrajudicial detention facilities where arbitrary detainment occurs. Recent events in the Red Sea have heightened the risk of foreign nationals being detained.

The U.S. Embassy in Sana'a suspended its operations in February 2015, and the U.S. government cannot provide emergency services to U.S. citizens. Cholera is also present throughout Yemen, and the provision of adequate medical supplies is either extremely limited or unavailable.

There is a very high risk of kidnapping and detention of U.S. citizens in Yemen, particularly dual-national Yemeni Americans. Rebel groups in Sana'a have detained U.S. citizens, including dual Yemeni American citizens. U.S. citizens, including dual nationals, have faced difficulty departing Yemen, including lengthy delays.

There are reports of companies outside of Yemen offering tourist visits to the Yemeni island of Socotra and misrepresenting the security situation in the area. They include facilitating unofficial and invalid visas to the region. The sovereign Republic of Yemen Government is the only entity that can issue valid Yemeni tickets. U.S. citizens should not travel to Socotra or any part of Yemen.

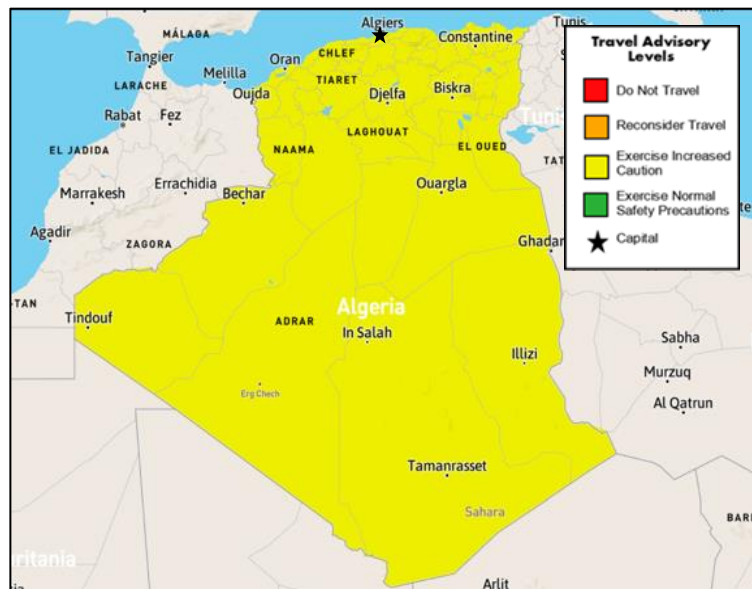
866-340-8569

info@wwffocus.com

www.focuspointintl.com

**HIGH RISK COUNTRIES****Algeria**Risk Level: **Moderate****Country Overview:**

In some parts of Algeria, the security situation is hazardous, with specific areas extremely unsafe. It is advised to exercise increased caution in Algeria due to terrorism. There is a moderate risk to personal safety and security because terrorists are likely to carry out attacks, including kidnappings, and civil disturbances sometimes occur throughout the country. Since February 2019, mass protests have occurred across Algeria, demanding immediate political reform. Travelers should avoid political gatherings and demonstrations and follow local advice.



Terrorists are likely to try to carry out attacks in Algeria, including kidnappings. Terrorist attacks have focused on the Algerian state, but attacks could be indiscriminate and include foreigners. There's also a risk that lone actors could target foreigners. You should be always vigilant and take additional security precautions, especially in the southern, Libyan, and Tunisian border areas; rural and mountainous areas in the north; and the Sahara.

Avoid traveling to rural areas within 50 km (31 miles) of the border with Tunisia and 250 km (155 miles) of Libya, Niger, Mali, and Mauritania due to terrorism and criminal activities, including kidnapping. Travel 30 km of the border with Tunisia in the provinces of Illizi and Ouargla and in the Chaambi mountains area, is not advised.

866-340-8569

info@wwffocus.comwww.focuspointintl.com



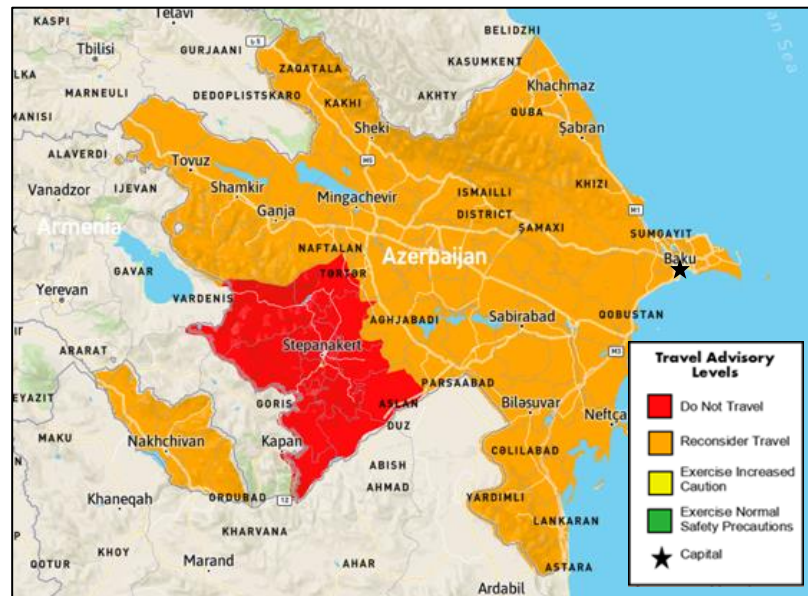
Azerbaijan

Risk Level: **Moderate**

Country Overview:

The security situation in some parts of Azerbaijan is hazardous, with specific areas extremely unsafe. It is advised to reconsider travel to Azerbaijan due to terrorism and armed conflict risk. There is a moderate threat to personal safety and security because terrorist groups continue to plot attacks.

Azerbaijan and Armenia are in dispute over the Nagorno-Karabakh territory. The region is recognized internationally as Azerbaijani, but ethnic Armenians have governed since 1994 following a separatist movement. Conflict between the two countries erupted again on September 19 after Azerbaijani police and civilians were killed by landmines. Azerbaijan mobilized and seized control of the territory within two days. Azerbaijan has exerted control over the state and begun disbanding the former Government. Travelers are advised to avoid Nagorno-Karabakh and the nearby border with Armenia.



Nagorno-Karabakh and the international border between Armenia and Azerbaijan should be avoided. Some areas still contain unexploded ordinances (UXO), including the towns and rayons of Ganja, Tartar, Barda, Beylagan, and Aghjabadi. Efforts to remove these UXOs are underway, and it is advised not to touch or approach any UXO but rather to warn Azerbaijani authorities immediately. The U.S. government cannot provide emergency services to U.S. citizens in Nagorno-Karabakh as access is restricted.

866-340-8569

info@wwffocus.com

www.focuspointintl.com



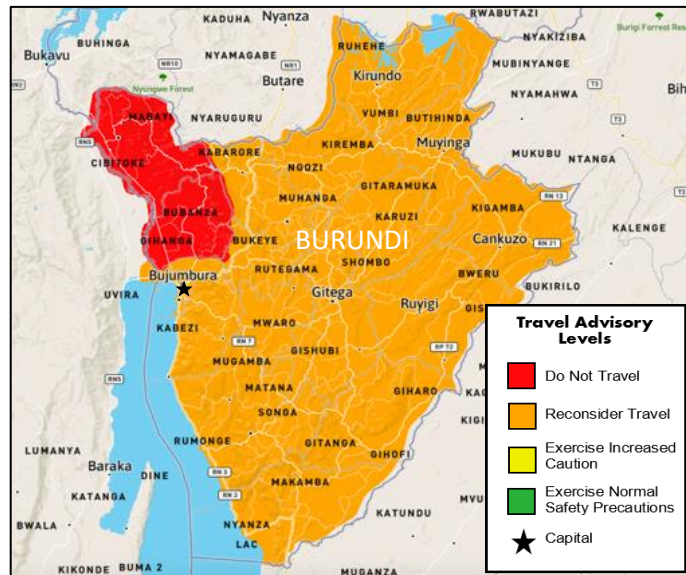
Burundi

Risk Level: **Extreme**

Country Overview:

The security situation in Burundi is hazardous, with some regions of the country being extremely unsafe. It is advised that you reconsider travel to Burundi. There is a high risk to personal safety and security because of ongoing political tensions, sporadic violence, clashes by armed groups, and serious crimes, such as armed robbery.

It is advised to avoid all travel to Cibitoke and Bubanza provinces; areas of Bujumbura Rural province west of the Rusizi River towards the Democratic Republic of the Congo border, except for the Rusizi Delta Nature Reserve; Ruvubu National Park; the road north of Bujumbura airport towards Cibitoke; and the main road running west from Kayanza through the Kibira National Park. It is also advised to limit all but essential travel to the rest of Burundi (excluding airside transit through Bujumbura International Airport).



The country's first-ever Rift Valley Fever (RVF) outbreak, a disease primarily affecting livestock, was reported in April 2022. The Government's response was to prohibit the slaughter of cattle, goats, and sheep. There are no reports of humans contracting the disease in Burundi; however, human infection remains possible through mosquito bites or for people in direct contact with infected animals.

In Burundi, the U.S. government cannot provide emergency services to U.S. citizens. Due to travel restrictions on U.S. Embassy personnel, the U.S. government is not able to provide emergency services to U.S. citizens in the following areas of Burundi: the provinces of Bubanza and Cibitoke, Kibira National Park (including the park's southernmost part in Muramvya province), and Ruvubu and Buriri Forest.

Travelers are advised to avoid the border region with the DRC due to the risk of armed incursion. The Rusizi National Park is the only area in Bujumbura Rural Province where travel is advised, however travelers are advised to take additional precautions due to the proximity to the DRC border.

866-340-8569

info@wwffocus.com

www.focuspointintl.com



Cameroon

Risk Level: **Extreme**

Country Overview:

The security situation in certain parts of Cameroon is hazardous. It is advised to exercise increased caution in Cameroon due to crime, civil unrest, and terrorism. There is a moderate risk to personal safety and security because of terrorist activity in Northern and Eastern Cameroon and violent crime, such as kidnapping, armed robbery, assault, and common carjacking.

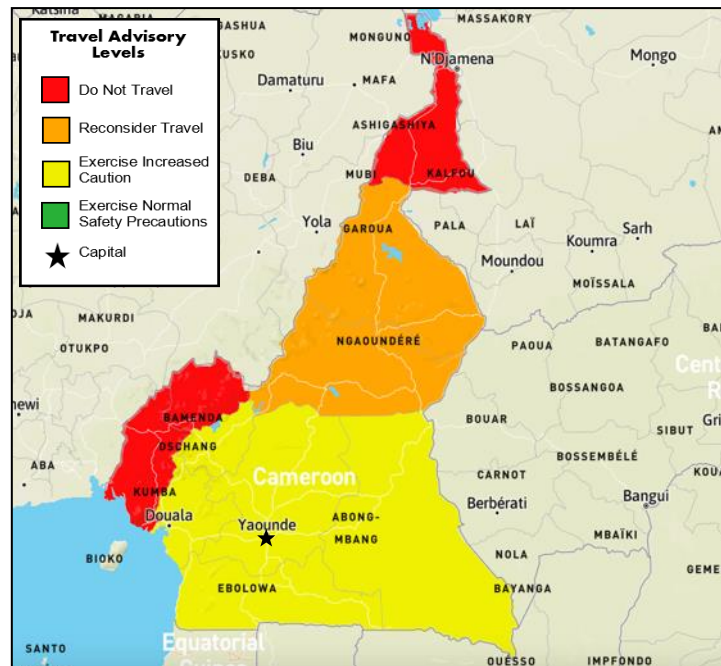
The Anglophone Crisis is an ongoing armed confrontation in the long-standing Anglophone conflict to carve out and independent state called Ambazonia in western Cameroon.

There have been multiple clashes between security forces and armed groups over the past year in many places in the Northwest and Southwest regions, including in the towns of Bafut, Tubah, Ndu, Widikum, and Lebialem division, the Gughe village, DongaMantung division, the Kikaikelaki village (Kumbo commune), Bui division, Bamessing village (Ndop commune), Ngoketunjia division. Travelers should be vigilant, keep a low profile, and monitor local media.

It is advised to avoid travel to the North, Far North, Northwest, and Southwest Regions and parts of the East and Adamawa Regions within 20 km of Cameroon's border with the Central African Republic due to armed violence, terrorism, crime, and kidnapping.

In Kie Ntem Province, north of Equatorial Guinea, there have been reports of an outbreak of hemorrhagic fever. The area surrounding it is off-limits to travel. It would be best to exercise extreme caution in and around Kie Ntem, Equatorial Guinea, Ambam, Kye-Ossi, and Olamze in southern Cameroon, Ntem, and Woleu in Gabon. Before you travel, check with the local authorities.

Due to current official travel restrictions, the U.S. government cannot provide emergency services to U.S. citizens in the North, Far North, Northwest, Southwest, and Parts of Adamawa and East Regions of Cameroon.



866-340-8569

info@wwffocus.com

www.focuspointintl.com



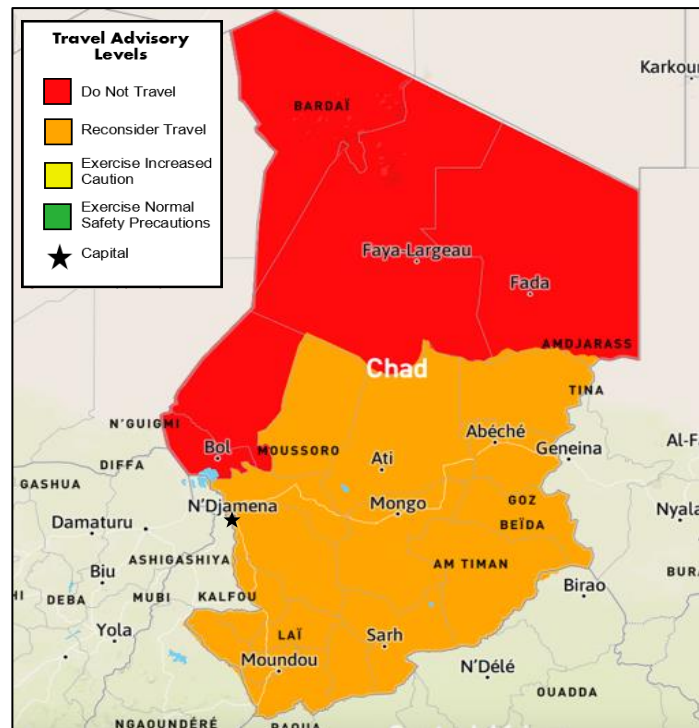
Chad

Risk Level: **Extreme**

Country Overview:

The security situation in Chad is hazardous, with some parts of the country being extremely unsafe. It is advised to reconsider travel to Chad due to crime, terrorism, and the existence of minefields. There is a high risk to personal safety and security because of widespread violent crimes, such as armed robbery and mugging, as well as terrorist attacks and minefields along the borders of Libya and Sudan.

The President of Chad, Idriss Deby Itno, was killed in battle while fighting rebels en route to N'Djamena, Chad's capital city. The military has taken control of the country in the interim, announcing that the late President's son, General Mahamat Idriss Deby Itno, would serve as interim head of state. Parliament and the Government have been dissolved and replaced by a transitional military council.



Elections were held in Chad on May 6, with incumbent transitional president Deby winning the election.

It is advised not to travel to the Lake Chad Region and the borders with the Central African Republic, Libya, and Sudan due to terrorism, armed conflict, and active minefields.

The U.S. Government needs more ability to provide emergency services to U.S. citizens in Chad. U.S. Government employees must obtain special authorization to travel outside the capital, including the Lake Chad Basin.

866-340-8569

info@wwfocus.com

www.focuspointintl.com



Colombia

Risk Level: **Moderate**

Country Overview:

In some parts of Colombia, the security situation is hazardous, with specific areas extremely unsafe. It is advised to reconsider travel to Colombia due to crime, civil unrest, and terrorism. There is a moderate risk to personal safety and security as the National Liberation Army (ELN) continues to plot attacks and violent and organized criminal activities, such as homicide, assault, armed robbery, extortion, and kidnapping. Travelers should be vigilant and pay close attention to warnings issued by the Colombian authorities.

Colombia is experiencing a recent uptick in large-scale protests, which have, in recent months, often turned violent. Several people have been killed during these demonstrations, and it is advised to avoid large demonstrations and monitor local media for the latest information.



It is advised to avoid all travel to areas within 20km of the Venezuela and Ecuador border, except the Pan-American Highway crossing at Ipiales. It is also recommended to limit all but essential travel to the Arauca, Guaviare, Choco, the Ariari region of southern Meta, the South Pacific, Sanquianga and Telembi regions of Narino, the Western part of Cauca (except Popayan), Buenaventura, the Bajo Cauca and Uraba areas of Antioquia, the site of Southern-Bolivar, the region of Southern-Cordoba, the Catatumbo region of Norte de Santander, Peurto Caicedo, Valle del Guamuez, Orito, San Migue, Peurto Guzman, Peurto Asis and Peurto Leguizamo in Putumayo, Peurto Carreno in Vichada, Cartagena del Chaira, San Vicente del Caguan, El Doncello, Peurto Rico, Paujil and La Montanita in Caqueta due to crime and terrorism.

The U.S. government cannot provide emergency services to U.S. citizens as U.S. government personnel cannot travel to these areas because of security restrictions and limited domestic travel options.

866-340-8569

info@wwffocus.com

www.focuspointintl.com



Congo (Republic of)

Risk Level: **Moderate**

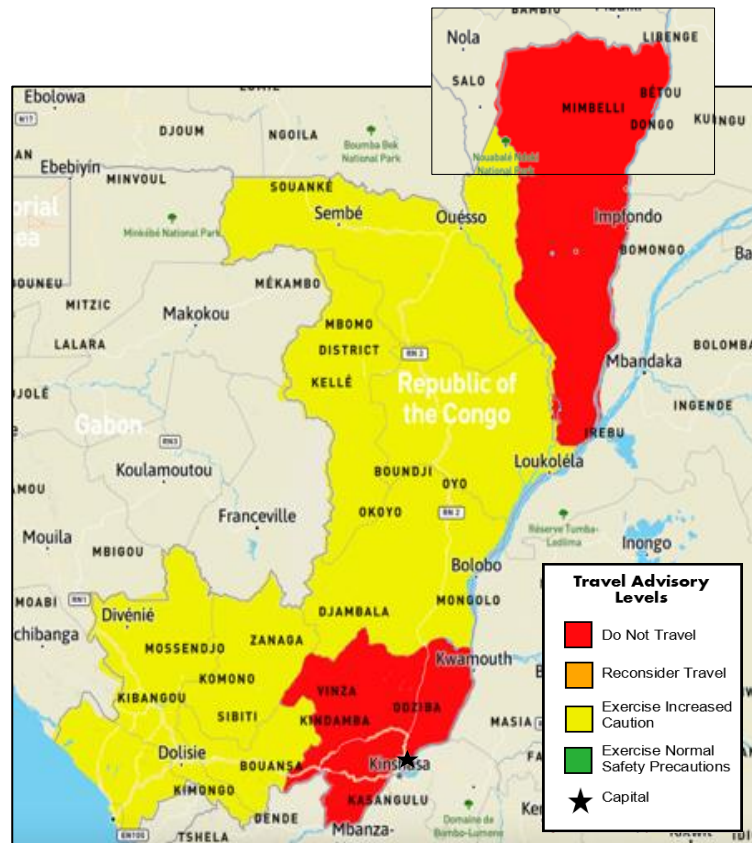
Country Overview:

The security situation in parts of the Congo is hazardous. It is advised to exercise increased caution in the country due to crime and civil unrest. There is a moderate risk to personal safety and security because violent crime, such as armed robbery and assault, is common. In addition, political demonstrations and armed clashes can be unpredictable.

The neighboring Democratic Republic of Congo (DRC) experiences sporadic but localized outbreaks of Ebola. Travelers are advised to take precautions when traveling near border regions with the DRC.

It is advised to avoid all travel to the southern and western districts of the Pool region, including the Boko, Kindamba, Kinkala, Mayama, and Mindouli districts; the Mouyondzi district of Bouenza region; and within 50km of the border with the Central African Republic in Likouala region.

The U.S. government needs more ability to provide emergency services to U.S. citizens outside Brazzaville.



866-340-8569

info@wwfocus.com

www.focuspointintl.com



Cuba

Risk Level: **Moderate**

Country Overview:

The security situation in Cuba is relatively stable and characterized by a strong military and police presence. Americans should exercise increased caution due to health attacks targeting numerous U.S. Embassy employees. Other travelers' safety and security in Cuba may also be at risk. While there is no recent history of terrorism in Cuba, attacks cannot be ruled out. Tourists should be aware of the threat of

petty crime, and Cuba does, at times, experience violent crimes such as armed robbery, sexual assault, and homicide. Exercise caution always.

It is advised to avoid Hotel Nacional and Hotel Capri in Havana. If you experience any unusual acute auditory or sensory phenomena, immediately move to another area.

Raul Castro retired and stepped down as the first secretary of the Communist Party of Cuba, transferring power to President Miguel Diaz-Canel. In the short term, little change is expected as Diaz-Canel is a staunch ally and supporter of the Castro family. The U.S. has declared Cuba a state sponsor of terrorism and has imposed sanctions over human rights violations.



866-340-8569

info@wwffocus.com

www.focuspointintl.com



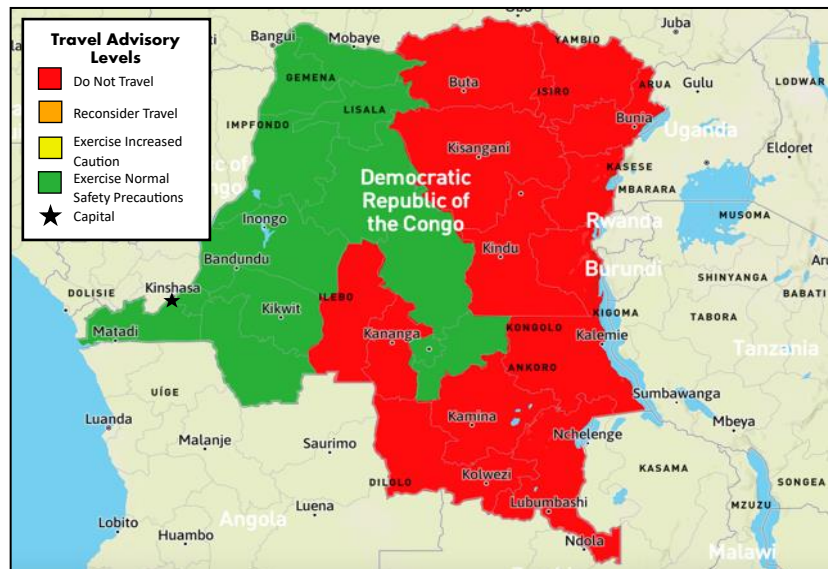
Democratic Republic of the Congo (DRC)

Risk Level: **Extreme**

Country Overview:

In some areas of the Democratic Republic of the Congo (DRC), the security situation is hazardous, with specific parts of the country extremely unsafe. It is advised to reconsider travel to the DRC due to civil unrest, terrorism, and crime.

There is a high risk to personal safety and security due to the activities of rebels and other armed groups, potential civil unrest, and outbreaks of violence, including killing, rape, kidnapping, and pillaging. Avoid overland travel in rural areas in eastern Congo. Contract a private security escort with local experience for business-critical trips.



The US Travel Advisory has issued a level 4 "do not travel" alert for specific regions in the Democratic Republic of Congo, including North Kivu Province, Ituri Province, the Eastern DRC Region, and the Three Kasai Provinces. Additionally, the advisory applies to all travel to or within 50km of the border with the Central African Republic. Traveling against this advice may invalidate your travel insurance.

A 'state of siege' was imposed for North Kivu and Ituri due to clashes in Goma which intensified in February 2024 and further attacks could occur at any time, leading to exit routes such as airports and borders closing with little to no warning. Travelers are advised to avoid the area.

Spontaneous protests outside of Western embassies are frequent in Kinshasa and North Kivu and could spread throughout the country without warning. Travelers are advised to avoid large gatherings.

The Democratic Republic of Congo (DRC) experiences sporadic but localized outbreaks of Ebola. Travelers are advised to avoid travel to outlying population centers. It is recommended to avoid all travel to the provinces of Kasai, Kasai Central, Kasai Oriental, Sud-Kivu, Nord-Kivu, Maniema, Mai-Ndombe, Tanganyika, and Ituri, as there have been sporadic and severe outbreaks of violence targeting civilians, including killing, rape, kidnapping, and pillaging. Limiting all but essential travel to the rest of the country is further advised.

866-340-8569

info@wwffocus.com

www.focuspointintl.com

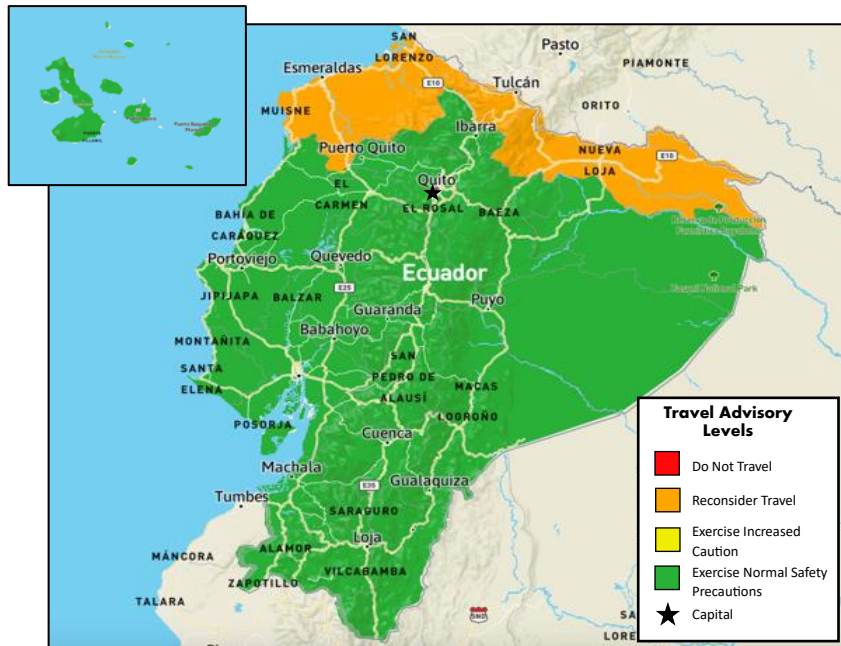


Ecuador

Risk Level: **Moderate**

Country Overview:

Travelers in Ecuador are advised to exercise increased caution, particularly in areas with a hazardous security situation. The northern border area with Colombia poses a heightened risk to personal safety due to a higher crime rate, including kidnapping for ransom. Additionally, severe, and sometimes violent demonstrations, as well as road blockades, can occur throughout the country with little warning. Awareness and caution are recommended for those traveling to or within



Ecuador. It is advised to avoid travel to Sucumbíos, and the northern part of Esmeraldas provinces, including Esmeraldas city and Guayaquil, south of Portete de Tarquí Avenue, due to crime.

Ecuador declared a 60-day state of emergency (SOE) effective from May 22, 2024, due to armed conflict. This was extended for a further 60 days on July 2. The state of emergency allows military and police to seize assets, conduct inspections and enter private properties without permission. Only essential travel to the Coastal Regions and within 20 km of the Ecuador-Colombia border is advised.

From January 18, 2024, to enter Ecuador via land or river borders from Peru or Colombia, travelers must provide a criminal record certificate from their country of residence for the past 5 years. Failure to comply may result in being denied entry. Exemptions include individuals with valid Ecuadorean visas, diplomatic passport holders, children under 18, and victims of human trafficking or those seeking international protection under Ecuador's Human Mobility Law. No restrictions apply to those entering Ecuador by air.

866-340-8569

info@wwffocus.com

www.focuspointintl.com



Egypt

Risk Level: **Moderate**

Country Overview:

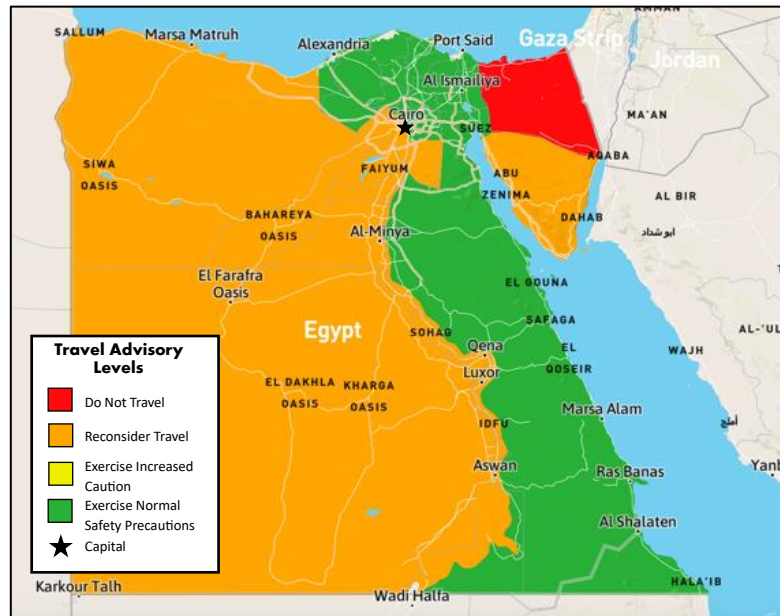
In some parts of Egypt, security is hazardous, with specific country areas extremely unsafe. Travelers to Egypt should reconsider travel due to terrorism. There is a moderate risk to personal safety and security overall due to several extremist organizations operating in Egypt. It is advised to avoid traveling to the Governorate of North Sinai and 20km of the Egyptian and Libyan border because of the significant increase in criminal activity and continued terrorist attacks on police and security forces.

As a result of the unstable security situation in Sudan, many people are reportedly trying to cross the border into Egypt. The two primary land border crossings between Egypt and Sudan are Qustul and Argeen. The town closest to these crossings in Sudan is Wadi Halfa, situated approximately 30km away from the border. However, there needs to be more infrastructure at these border crossings, resulting in extended wait times of several days for people attempting to cross. Travelers should know that access to food and water is very limited at these crossings.

It is also advised to limit all but essential travel to the eastern part of Ismailiyah, the Hala'ib Triangle, Bir Tawil Trapezoid, and the Governorate of South Sinai, except for the area within the Sharm el-Sheikh perimeter barrier, which includes the airport and the areas of Sharm el Maya, Hadaba, Naama Bay, Sharks Bay, and the area west of the Nile Valley and Nile Delta regions, excluding the coastal areas between the Nile Delta and Marsa Matruh.

As the Israel-Hamas conflict in Gaza intensifies, the safety situation at and near the Egypt-Gaza border will deteriorate. Travelers near the Gaza border are advised to leave the area as soon as possible; otherwise, avoid the area.

Local law prohibits protesting or demonstrating without a permit. Being near anti-government protests can draw scrutiny from Egyptian police and security forces. U.S. citizens have been detained for participating in demonstrations and posting content on social media perceived as critical of Egypt or its allies.



866-340-8569

info@wwfocus.com

www.focuspointintl.com

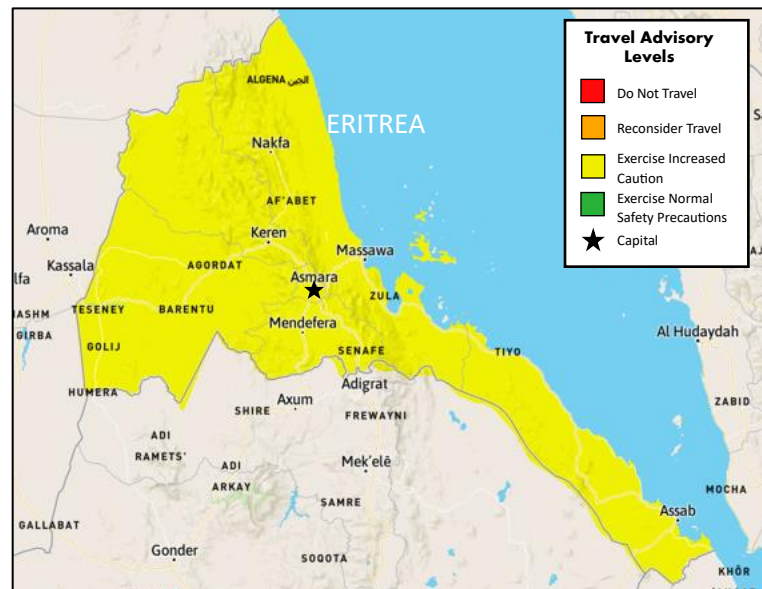


Eritrea

Risk Level: **Extreme**

Country Overview:

The security situation in some parts of Eritrea is extremely dangerous. Due to travel restrictions, limited consular assistance, and political volatility, it is advised to exercise increased caution in Eritrea. There is a high risk to personal safety and security because of petty crimes like bandit attacks and pickpocketing, the ongoing instability with Ethiopia, and border disputes with Djibouti. Landmines can be found in many remote areas in Eritrea, particularly in Nakfa, AdiKeih, Arezza, the 40 km-wide regions between the Mereb and Setit Rivers, and in the region north and west of Keren, areas near Ghinda, Massawa, Barentu, Agordat, Dekemhare, and south of Tessenae.



It is advised to avoid all travel within 25km of Eritrea's land borders. All border crossings between Eritrea and Ethiopia are closed, and all foreign nationals, including diplomats, must apply for a travel permit well in advance to leave Asmara. Bearers of U.S. passports are advised to avoid attempting land travel between the two countries.

In Eritrea, the U.S. government cannot provide emergency services to U.S. citizens because U.S. government employees must obtain special clearance to travel outside Asmara. Eritrean law enforcement officials regularly block access to foreign nationals in detention. Therefore, the U.S. Embassy may not receive notification or be allowed access to you if you are detained or arrested.

866-340-8569

info@wwfocus.com

www.focuspointintl.com



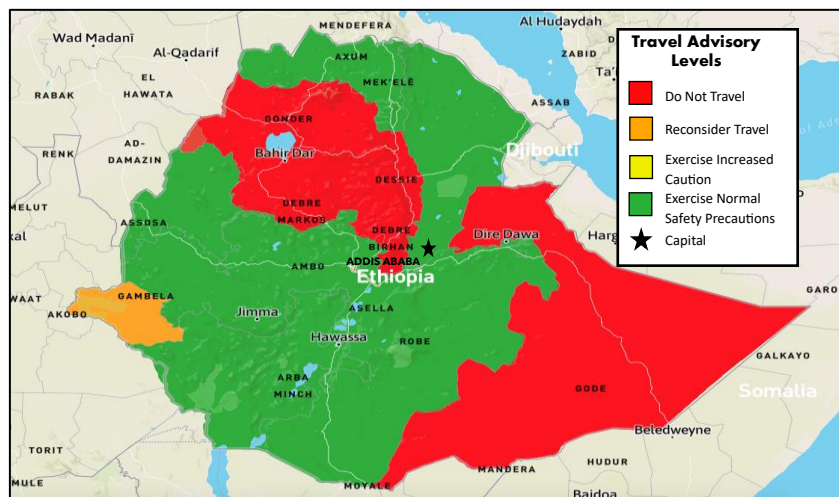
Ethiopia

Risk Level: **High**

Country Overview:

The security climate in some parts of Ethiopia is complex, with some highly unsafe regions. It is advised to reconsider travel to Ethiopia due to armed conflict, communications disruptions, civil unrest, crime, terrorism, extreme risk, and uncertainty.

Though the military conflict in Tigray subsided after the Ethiopian Government and Tigray People's Liberation Front signed a peace agreement in 2022, a state of emergency was imposed in August 2023 after conflict started between Amhara militia groups (Fano) and the Ethiopian National Defence Force. Conflict continues in the Amhara region.



It is advised to avoid all travel within 10km of the border of Eritrea, South Sudan, and Kenya and 20km of the border with Sudan. It is also advised to avoid travel to the whole of the Tigray regional state, the whole of Gambella provincial state, the West Wollega Zone, East Wollega Zone, Kellem Wellega and Horo Gudru Wellega in the Oromia regional state, the total of Metekel Zone and Maokomo Special zone in the Benishangul Gumuz provincial state, north of the A4 road in West Shewa Zone, south and west of the A3 in North Shewa Zone in the Oromia regional state, and within 100km of the border with Tigray provincial state to the north of Anseba town in Afar, and within 30km of the border with Tigray to the south of Anseba town in Afar, within 100km of the Ethiopian border with Somalia and Kenya in Ethiopia's Somali region and 30km of the Ethiopian border with Somalia in the Fafan zone except the border town and crossing at Wajale and the principal road between Jijiga and Wajale.

There is a risk of widespread protests in response to political and religious unrest. Demonstrations may occur at short notice. These can result in enormous gatherings, which might cause travel disruptions and road closures. You should use caution and avoid crowds, especially those near places of worship.

The Government of Ethiopia has restricted or shut down the internet, cellular data, and phone services during and after civil unrest. These restrictions impede the U.S. Embassy's ability to communicate with and provide consular services to U.S. citizens in Ethiopia. The U.S. Embassy cannot provide emergency services to U.S. citizens outside Addis Ababa.

866-340-8569

info@wwffocus.com

www.focuspointintl.com



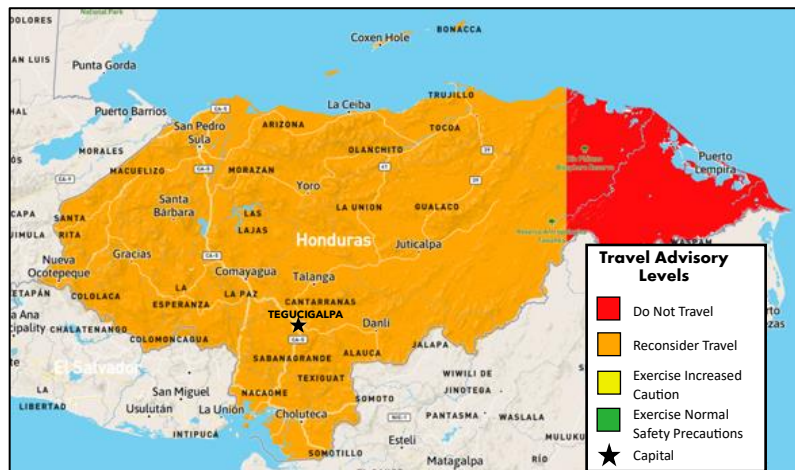
Honduras

Risk Level: **Extreme**

Country Overview:

The security situation in Honduras is hazardous, with a specific part of the country being extremely unsafe. It is advised to reconsider travel to Honduras due to crime. There is a heightened risk to personal safety and security because of violent crimes like homicide and armed robbery.

There has been a sharp increase in cases of dengue fever in Honduras, particularly in the departments of Cortés, Yoro, Olancho, and Santa Bárbara. Travelers should monitor local media for updates.



Gracias a Dios is an isolated region with high criminal activity and drug trafficking levels. Infrastructure is weak, government services are limited, and police and military presence is scarce. It is advised to avoid all travel to Gracias a Dios Department and limit all travel to the rest of the country unless it's essential.

866-340-8569

info@wwfocus.com

www.focuspointintl.com



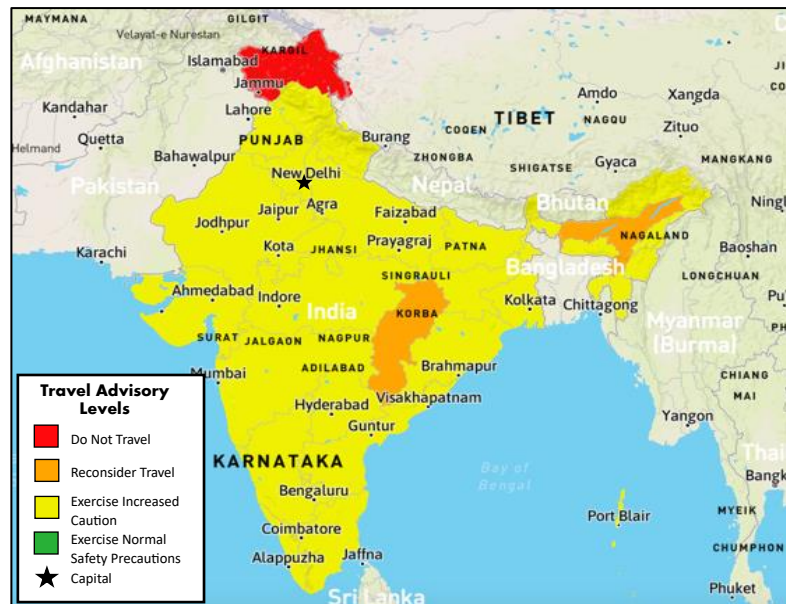
India

Risk Level: **Moderate**

Country Overview:

The security situation in some parts of India is hazardous, with specific areas of the country being extremely unsafe. It is advised to exercise increased caution in India due to crime and terrorism. There is an overall moderate risk to personal safety and security because of terrorist and insurgent activity, civil unrest, the potential for armed conflict, and violent crime, such as sexual assault.

Since the Indian Government's constitutional change that altered Jammu and Kashmir's internal political status, the region has seen regular protest action and political violence. An increased security presence is in place due to frequent terrorist attacks in the area.



The country is experiencing heightened religious tensions between Hindus and Muslims. The rising Hindu nationalism within the ruling BJP party has seen frequent incidents of anti-Muslim hate crimes that authorities have ignored or downplayed. The country was heavily criticized when a BJP spokesperson made derogatory remarks about Islam from Muslim countries. Tensions are likely to lead to an increase in violent incidents. Travelers should avoid large gatherings and protests and speak about religious matters while traveling in India.

Ethnic clashes occur frequently, leading to authorities implementing restrictions, including imposing curfews in various parts of affected states. Transportation and internet access is often disrupted or suspended. Travelers are advised to avoid protests, strikes, and demonstrations as they may turn violent.

It is advised to avoid all travel to Jammu and Kashmir (except the Ladakh region) and the India- Pakistan border (except the Atari crossing). Limiting all but essential trips to the Northeastern states (Assam, except Guwahati, Nagaland, and Manipur), Chhattisgarh, and neighboring states' border areas is also advised.

866-340-8569

info@wwffocus.com

www.focuspointintl.com



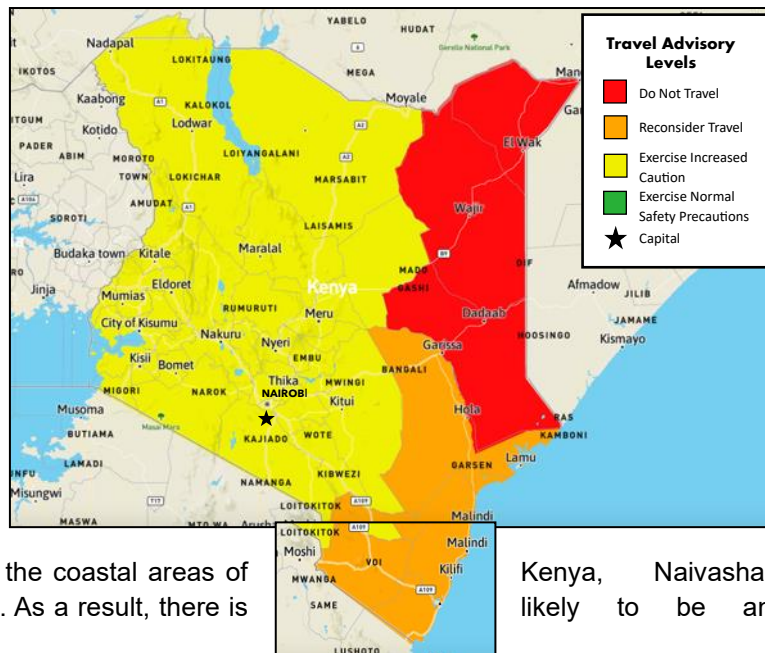
Kenya

Risk Level: **Moderate**

Country Overview:

In some areas of Kenya, the security situation is hazardous, with specific parts of the country being extremely unsafe. It is advised to exercise increased caution in Kenya due to terrorism, health issues, and crime. There is an overall moderate risk to personal safety and security because of terrorist attacks and violent crimes, such as armed carjacking, mugging, home invasion, and kidnapping.

The U.S. State Department has warned that credible information indicates that extremists in Nairobi, the coastal areas of and Nanyuki may target Westerners. As a result, there is increase in visible security services.



Kenya, Naivasha, likely to be an

Kenya is currently experiencing heavy rains which have resulted in widespread flooding prompting the government to issue mandatory evacuation orders for people in flood-prone areas. Travelers should avoid low-lying areas and follow the advice of the local authorities.

Cholera cases have also been detected in Narok, Kajiado, Garissa, and Machakos counties. Travelers are advised to monitor the latest updates from the World Health Organization.

Travelers should know that the political opposition has arranged anti-government demonstrations in recent months that could resume without prior notice. Recent protests turned violent, with protestors clashing with police, resulting in deaths and injuries. There have been major protests against the draft Finance Bill 2024 across multiple cities in Kenya, including Nairobi. Several protestors have been injured and killed at these political demonstrations. Travelers are advised to avoid large gatherings and monitor local media for updates.

Limiting all but essential travel to Nairobi neighborhoods of Eastleigh and Kibera, Eastern Garissa County, Mandera County excluding Mandera West sub-county, Lamu County excluding Lamu Island and Manda Island, areas of the Tana River County north of the Tana River itself, within 15km of the coast from Tana River down to the Galana river and be extremely cautious when traveling anywhere in Kenya after dark. It is advised to defer all travel within 60km of the Kenya-Somalia border and areas of Turkana County.

866-340-8569

info@wwffocus.com

www.focuspointintl.com



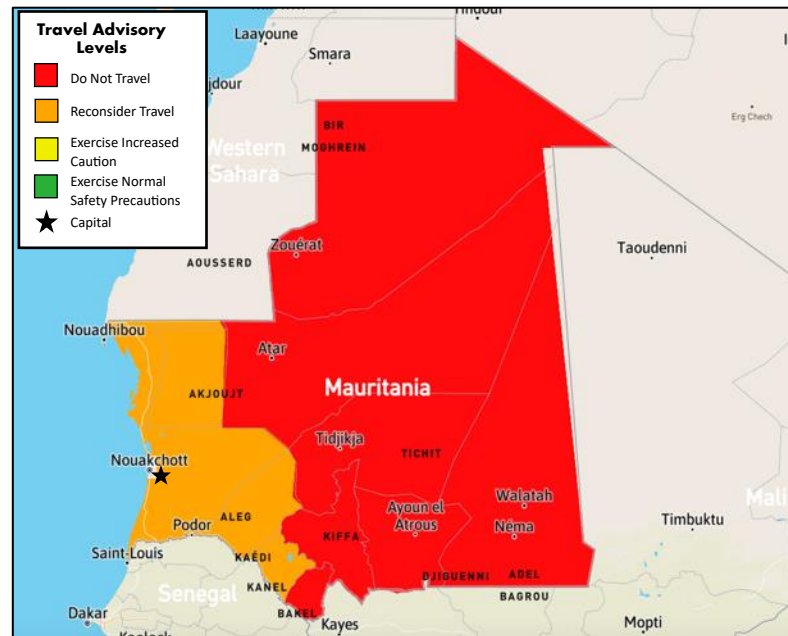
Mauritania

Risk Level: **Moderate**

Country Overview:

The security situation in Mauritania is highly dangerous, and specific parts of the country are extremely unsafe. It is advised to reconsider travel to Mauritania due to crime and terrorism. There is a high risk to personal safety and security because of activities by terrorist groups and violent crimes, such as mugging, armed robbery, kidnapping, rape, and assault.

It is advised to avoid travel to the province of Tiris Zemmour (except the town of Zouérat); the area of Adrar (East of Atar); the regions of Tagant, Hodh el Chargui, Hodh El Gharbi, Assaba, and Guidimaka; and within 25km of the Western Sahara border (except the Nouakchott - Nouadhibou corridor).



The Government of Mauritania designates certain areas off-limits to foreigners and most Mauritians. These "No Movement Zones" are hazardous due to their proximity to Mali, where armed groups engaged in an active insurgency carry out cross-border attacks into Mauritania.

Presidential elections are scheduled for 29 June 2024. Mobile and Wi-Fi internet connections may be disrupted during and after the election. Demonstrations can happen at any time in Nouakchott. Travellers should avoid political gatherings and demonstrations and follow the advice of local authorities and security forces. Travellers should also maintain adequate stocks of non-perishable food and water.

The U.S. government cannot provide emergency services to U.S. citizens in Mauritania as U.S. government employees must obtain special authorization to travel outside Nouakchott.

866-340-8569

info@wwfocus.com

www.focuspointintl.com

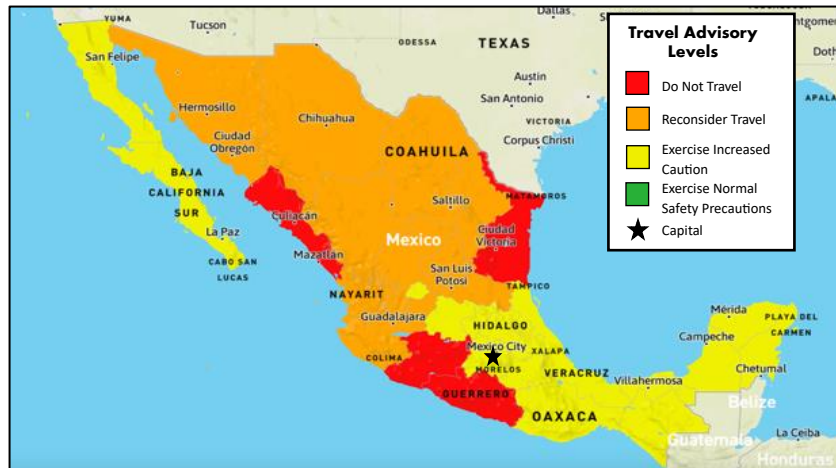


Mexico

Risk Level: **Moderate**

Country Overview:

The security situation in some parts of Mexico is hazardous, with specific areas of the country being extremely unsafe. Travelers to Mexico should exercise increased caution due to crime. There is a high risk to personal safety and security in certain areas because of widespread violent crime, such as homicide, kidnapping, carjacking, and robbery.



It is advised to avoid all travel to Colima State, Guerrero State, Michoacán State, Sinaloa State, Tamaulipas State, and Zacatecas State. Limit all but essential trips to Baja California, Guanajuato, Chihuahua, Coahuila, Durango, Jalisco, Morelos, Nayarit, Nuevo Leon State, San Luis Potosi State, Sonora State, Zacatecas State, and travel on Federal Highway 199 (Carretera Federal 199) between Rancho Nuevo (just outside San Cristobal de las Casas) and Palenque. Violent crimes are widespread and armed criminal groups have targeted and robbed commercial vessels, oil platforms, and offshore supply vessels in the Bay of Campeche. It is advised to limit all but essential travel within 40 km (25 miles) of the Guatemalan border up to and including the border crossing at Gracias a Dio.

Protest action occurs frequently in major cities, and travellers should avoid all demonstrations and exercise increased caution when in proximity to large gatherings. Follow the advice of local authorities. Incidents of gang violence have occurred in popular tourist destinations such as Cancun and surrounding areas. Travelers are advised to maintain a high level of situational awareness.

The Pacific and Atlantic coasts of Mexico during the hurricane season which run from June to November, Mexico can be affected by huge hurricane storms. During tropical storms and hurricanes, flooding and landslides may occur hundreds of miles from the storm's centre and even after the storm's passing.

When visiting Mexico travellers are advised to make sure that their passport is valid for the length of their stay. Passports are to be valid for at most 180 days, which is the maximum time tourists can remain in Mexico.

Increased volcanic activity on the Mt Popocatepetl and Colima volcanoes has resulted in their closures to the public. Mt Popocatepetl lies 92 km (57 miles) southeast of Mexico City and 64 km (39 miles) west of Puebla. A 12 km (7 miles) exclusion zone has been established around Popocatepetl volcano. With the alert level currently raised to Level 2 of the Amber tier, travellers must remain vigilant and be prepared for a possible evacuation. Volcanic ash disrupts air travel and results in airport closures at short notice.

866-340-8569

info@wwffocus.com

www.focuspointintl.com



Country Overview:

[illegible]

Abdourahmane Tchiani declared himself the new leader of Niger. There is a heightened military presence near government buildings, including at the Presidential Palace on Boulevard de la République. Land and air borders remain closed. The situation remains volatile and could escalate without warning. Tensions are escalating between Niger's new military regime and the West African regional bloc ECOWAS. Travelers are advised to avoid all travel to Niger.

The U.S. government cannot provide emergency services to U.S. citizens in remote and rural areas as U.S. government employees must obtain special authorization to travel outside of the capital.



Nigeria

Risk Level: **Extreme**

Country Overview:

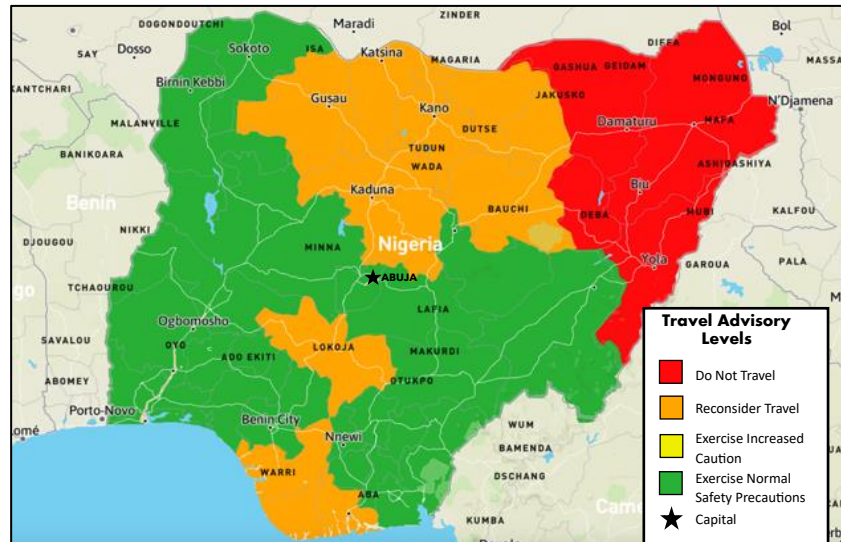
The security situation in Nigeria is hazardous, and specific parts of the country are incredibly unsafe. It is advised to reconsider travel to Nigeria due to crime, terrorism, and piracy. There is a high risk to personal safety and security because of the threat posed by extremist organizations, kidnappings, and violent crimes, such as armed robbery, assault, carjacking, and rape.

The risk of kidnappings in Nigeria, particularly in the northern and Middle Belt states, remains high. Gangs and unidentified individuals have carried out most of these attacks, but Boko Haram militants were behind some of them in northeast Nigeria. Even though the kidnappings often end without bloodshed once a ransom is paid, these attacks can result in injuries and fatalities. Criminal groups usually fire indiscriminately at vehicles to stop them. Reconsider overland travel across the country until further notice due to an ongoing spike in kidnapping-for-ransom and bandit attacks.

Militant groups launch attacks targeting oil and gas infrastructure in the Niger Delta region, with the area's risk of robbery, criminality, and kidnapping remaining high.

It is advised to avoid travel to Borno State, Kaduna State, Katsina State, Zamfara State, Yobe State, Adamawa State, Gombe State, the riverine areas of Delta, Bayelsa, Rivers, Akwa Ibom, and the Cross River States; and within 20km of the border with Niger in Zamfara State. It is also advised to limit all but essential travel to Bauchi State; Kano State; Jigawa State; Sokoto State; Abia State; Plateau State; Taraba State; Kogi State; Imo State; within 20km of the border with Niger in Sokoto and Kebbi States; non-riverine areas of Delta, Bayelsa and Rivers States.

Nigeria has an ongoing diphtheria outbreak, specifically in the Kano state. Diphtheria is spread by human contact and airborne exposure. Travelers are advised to avoid the area and close contact with people from the state. Travelers should be fully vaccinated if they need to travel to impacted areas.



866-340-8569

info@wwffocus.com

www.focuspointintl.com



Pakistan

Risk Level: **Extreme**

Country Overview:

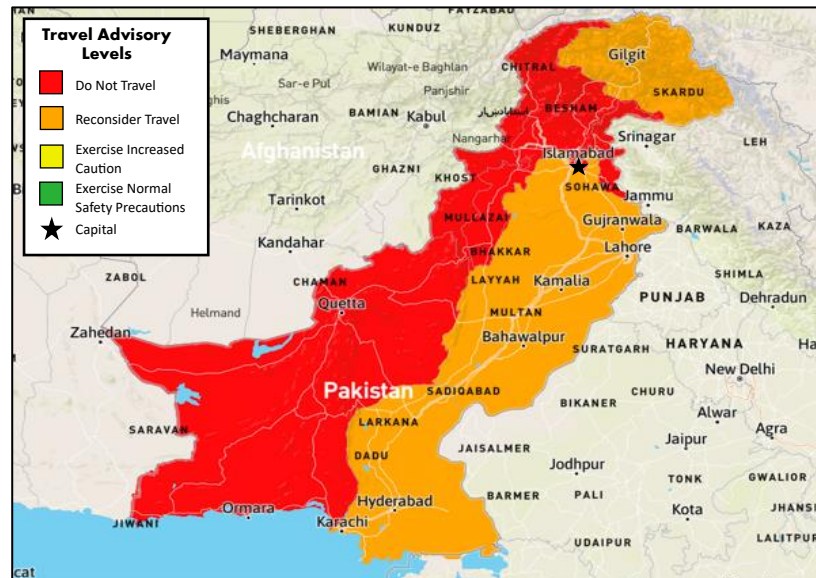
The security situation in Pakistan is hazardous, and a significant part of the country is exceptionally unsafe. It is advised to reconsider travel to Pakistan due to terrorism. There is a high risk to personal safety and security due to terrorist attacks. Political demonstrations often become violent. Travelers should continue to exercise caution, monitor news reports, and follow the advice of local authorities.

The U.S. Bureau of Consular Affairs advises against travel to specific areas, including within 10 miles of the Pakistan-Afghanistan border, 10 miles of the Line of Control, most areas in Khyber Pakhtunkhwa Province, and all of Balochistan Province. Tensions are heightened amid regional conflicts, such as Israel's actions in Gaza.

Terrorist groups continue organizing attacks in Pakistan. Attacks on civilians, local military, and police targets are commonplace. Following the death of Al Qaeda leader Ayman al-Zawahiri in a U.S. drone attack in Afghanistan, foreign nationals in Pakistan should be extra vigilant. Terrorists may retaliate and attack with little or no warning, targeting transportation hubs, markets, shopping malls, military installations, airports, universities, tourist locations, schools, hospitals, places of worship, and government facilities. Terrorists have targeted U.S. diplomats and diplomatic facilities in the past.

Crime is high, particularly on public transport, and in crowded areas. Be cautious when moving around urban areas at night, especially when on foot. Foreigners have been targeted by criminals, including kidnappers. There is an active black market for forged and stolen passports along with credit card fraud and similar scams. Travellers are advised to take safety precautions, keep a low profile and choose accommodation carefully.

Travellers are advised to make sure that their passport is valid for at least 6 months from the date of their Visa application. Customs has stringent rules regarding goods that can be brought into and taken out of the country so travellers must declare anything that may be prohibited, subject to tax or duty. The U.S. government is restricted in providing emergency services to U.S. citizens in Pakistan due to the security environment.



866-340-8569

info@wwffocus.com

www.focuspointintl.com



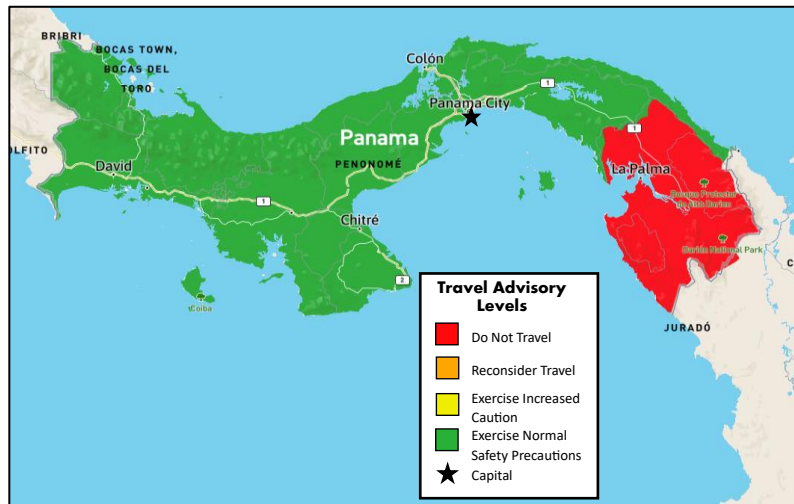
Panama

Risk Level: **Moderate**

Country Overview:

The security situation in Panama is relatively safe, but a specific region within the country has an extreme risk due to the presence of criminal elements and the operation of drug and human trafficking networks. Moreover, emergency response and consular assistance are limited in some areas. Overall, travelers should exercise standard precautions in Panama.

It is advised to avoid all travel to parts of the Darién Region, Mosquito Gulf, 10 miles of the coastline from Boca de Rio, Chiriqui to Cocle del Norte, all areas south of Jaque to Manene to Yaviza to Lajas Blancas cities to the Colombian border, the city of Lajas Blancas and the city of El Salto. If you plan to travel to Darien province, you are advised to do so only with an organized group and to destinations that are under the surveillance of the Panamanian police.



There may be demonstrations to protest internal Panamanian issues or, more rarely, manifestations of anti-American sentiment. While most demonstrations are non-violent, the Panamanian National Police have used tear gas and riot control munitions in response to protests, mainly when roadways are blocked, or aggression is used against the police. Panama City, Colon, and Chiriqui provinces have the highest crime rates. Common crimes include shootings, home invasions, sexual assault, armed robberies, muggings, and thefts.

The U.S. government has limited ability to provide emergency services to U.S. citizens in this region as U.S. government personnel must obtain prior approval before traveling there and face additional restrictions before such travel is approved.

866-340-8569

info@wwfocus.com

www.focuspointintl.com

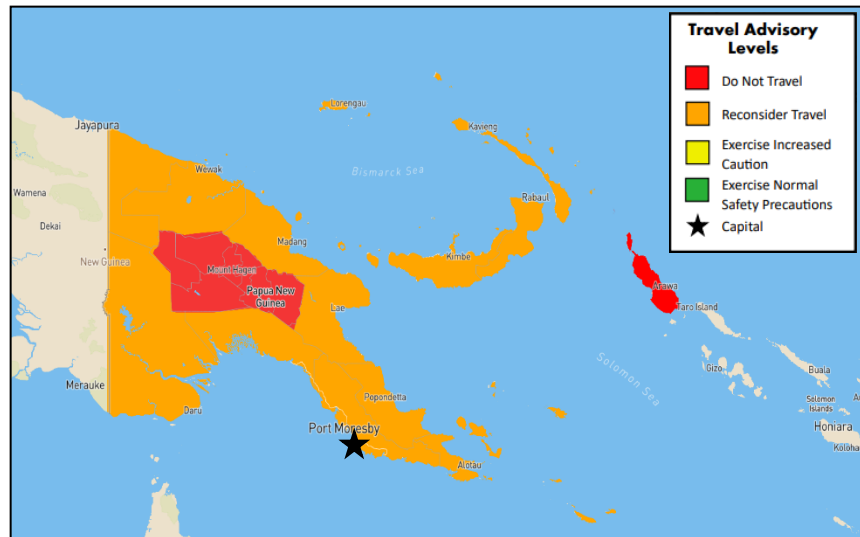


Papua New Guinea

Risk Level: **Extreme**

Country Overview:

The security situation in Papua New Guinea is considered high risk due to crime and civil unrest, and travelers are advised to reconsider travel. Exercise increased caution due to unexploded ordinance (UXO) and volcanic activity. Seasonal natural disasters, such as tropical cyclones and flash flooding, are common in Papua New Guinea. Keep an eye on the most recent weather reports.



Law and order are poor or very poor in many parts of the country. Though the risk of severe armed conflict or terrorist activity is low, crime is a serious concern in major cities, and parts of the country are unstable. Common violent crimes include sexual assault, carjackings, home invasions, and armed robberies. Outside of the capital of Port Moresby, police presence is limited, and officers may be unable to assist due to limited resources. Pay close attention to your safety, especially after dark, and watch local media for potential new security threats.

There is a high risk of tribal fighting in Hela and Southern Highlands provinces. Tensions between communal or tribal groups can erupt anytime and without warning and quickly escalate. Travelers are advised to avoid the Highlands provinces and monitor local media for updates.

Due to civil unrest, avoiding all travel to the Highlands region, Southern Bougainville, particularly areas near the Panguna mine, is advised. Reconsider traveling to Rabaul in East New Britain Province, Kimbe in West New Britain Province, and Manam Island in Madang Province due to the high seismic and volcanic activity risk. There is still WWII unexploded ordinance, and travelers should exercise increased caution when traveling in remote areas, particularly along the Kokoda trail and at Milne Bay and Rabaul.

866-340-8569

info@wwffocus.com

www.focuspointintl.com



Philippines

Risk Level: **Moderate**

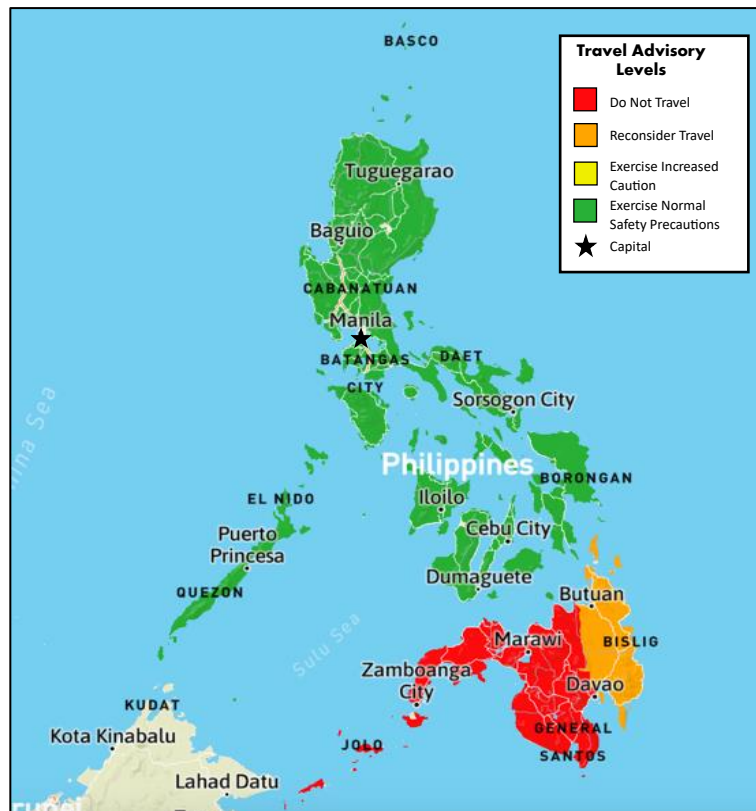
Country Overview:

In some parts of the Philippines, the security situation is hazardous, with specific areas extremely unsafe. It is advised to exercise increased caution throughout the country due to crime, terrorism, and civil unrest. There is a high risk to personal safety and security because of occasional kidnappings, bombings, and widespread criminal activity, such as con games, pickpocketing, internet scams, and credit/ATM card fraud. Travelers should keep up to date with local information and avoid any demonstrations. The Philippines has seen a resurgence in the Poliovirus nationwide, and travelers are advised to consult their doctor before traveling. There have also been numerous cases of Dengue fever, which has now exceeded the epidemic threshold.

It is advised to avoid all travel to western and central Mindanao and the Sulu Archipelago (including the southern Sulu Sea) because of terrorist activity and clashes between the military and insurgent groups. Limit all travel unless it is crucial to the remainder of Mindanao (excluding Siargao Islands, Dinagat, and Camiguin) and the south of Cebu province, including the municipalities of Badian and Dalaguete and the surrounding areas leading to Badian and Dalaguete, due to the threat of terrorism.

Terrorist and armed groups continue to organize plans for bombings, possible kidnappings, and other offensive maneuvers in the Philippines. Armed groups and terrorists may attack with little warning, targeting shopping malls, markets, tourist locations, and local government facilities.

Travellers are advised to be vigilant of the numerous volcanoes in the Philippines, any of which can erupt without warning. Sudden steam and ash explosions may happen at any time. On 3 June, authorities raised the alert level of Kanlaon Volcano in Negros Island to level 2 (increasing unrest) following an explosive eruption. Check with your airline for any disruption to flights. Check news reports and follow local advice before travelling to any areas around volcanoes. Avoid volcanic areas during and immediately after heavy rainfall when there's increased risk of lava flows.



866-340-8569

info@wwffocus.com

www.focuspointintl.com

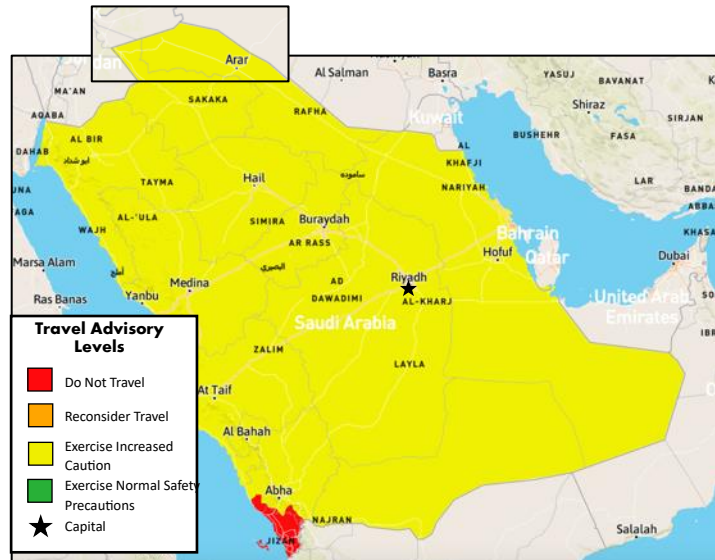


Saudi Arabia

Risk Level: **Moderate**

Country Overview:

In some parts of Saudi Arabia, the security situation is hazardous, with specific areas extremely unsafe. It is advised to exercise increased caution in Saudi Arabia due to terrorism and armed conflict. There is a moderate risk to personal safety and security overall because terrorist groups continue plotting possible attacks in the country. Rebel groups operating in Yemen have launched missiles, drones, and IEDs into Saudi Arabia, targeting populated areas and critical national infrastructure.



Avoiding all travel within 50 miles of the Saudi-Yemen border is advised. This includes the cities of Jizan, Najran, and Qatif in the Eastern province and its suburbs, including Awamiyah. Abha International Airport also falls in this avoid advisory.

Regional forces hostile to Saudi Arabia have conducted destructive and sometimes lethal attacks against various targets, including critical infrastructure, airports, military facilities, and energy facilities throughout the country, and targeting vessels in Red Sea shipping lanes. The civilian airport in Abha, areas close to Jeddah, Riyadh, and Yanbu, military deployments in the south, and specific oil and gas establishments are all examples of recent targeted attacks. The Islamic Republic of Iran (IRI) has supplied Yemen-based Houthis and other regional proxy groups with weapons, including missiles, rockets, and drones. Houthi militants continue to organize and conduct attacks against locations in Saudi Arabia. Violence associated with Iran-supported groups represents a significant threat. U.S. citizens living and working near military bases and critical civilian infrastructure, particularly near the border with Yemen and the Eastern Province, are at heightened risk of missile and drone attacks.

Travellers entering Mecca without a valid Hajj permit between 23 May and 21 June could receive a significant fine, deportation and a ban from re-entering Saudi Arabia. The Hajj visa is for a set length of time and is not extendable.

866-340-8569

info@wwffocus.com

www.focuspointintl.com



Tunisia

Risk Level: **Moderate**

Country Overview:

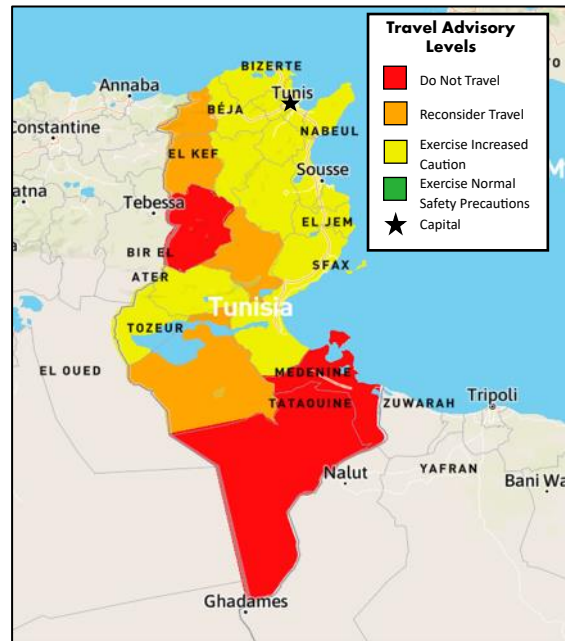
In some parts of Tunisia, the security situation is hazardous, with specific areas extremely unsafe. It is advised to exercise increased caution in Tunisia due to terrorism. Terrorist groups active in the country pose a significant threat to travelers in the region. A state of emergency has been in effect since November 24, 2015. The state of emergency has been extended numerous times, with the most recent extension extending it to the end of 2023.

On July 26, 2022, President Saied was declared the victor in a constitutional referendum he had called for to solidify his hold on power. The victory allowed him to appoint judges and government ministers and introduce laws.

Tunisia is scheduled to hold elections this year, with President Saied's term due to end in October. Under his rule, Tunisia has seen attacks on both the judiciary and journalist, stoking fears of democratic backsliding and rising authoritarianism. President Saied has also overseen a poor performing economy, which could impact the coming election.

It is advised to avoid all travel to the Mount Chaambi National Park area, including the town of Kasserine, areas along the Libyan border, including the city of Ben Guerdane and the immediate surrounding area, and the militarized zone south of the towns of El Borma and Dhehiba. It is also advised to limit all but essential travel to areas south of, including the towns of Nefta, Douz, Medenine, and Zaris and the Governorates of Le Kef, Jendouba, and Sidi Bou Zid.

The U.S. government needs more ability to provide emergency services to U.S. citizens in some areas of Tunisia.



866-340-8569

info@wwfocus.com

www.focuspointintl.com



Turkey

Risk Level: **Moderate**

Country Overview:

The security situation in some parts of Turkey is hazardous, with specific areas considered highly unsafe. It is advised to reconsider travel to Turkey due to terrorism and arbitrary detentions.

There is a high risk to personal safety and security because terrorist groups continue to plot attacks

in Turkey. Government security officials have detained individuals who appear primarily politically motivated on scant or secret grounds. Most episodes have occurred in southeast regions of the country, Ankara, and Istanbul.

The war in Gaza has increased regional tensions, leading to ongoing demonstrations in various parts of Turkey. Significant protests have occurred outside diplomatic facilities related to the conflict, particularly Israeli diplomatic missions in major cities such as Ankara and Istanbul. Travelers are recommended to avoid demonstrations as they can deteriorate into violence.

Since the beginning of 2023, there has been a surge in gastrointestinal infections, with over 200 cases of Salmonella detected from travelers returning from Turkey. To protect themselves from potential diseases, travelers should take precautions with food and water.

It is advised to avoid all travel within 10km of the border of Syria, the city of Diyarbakir, Sirnak province, and Hakkari province.



866-340-8569

info@wwffocus.com

www.focuspointintl.com