

THE TEXAS A&M UNIVERSITY SYSTEM

FACTS 2012

## THE TEXAS A&M UNIVERSITY SYSTEM

[www.tamus.edu](http://www.tamus.edu) | 979-458-7700

A&M System Headquarters

301 Tarrow St.

College Station, Texas 77840-7896

THE TEXAS A&M UNIVERSITY SYSTEM was officially established in 1948 and has evolved into one of the largest systems of higher education in the nation, with a statewide network of 11 universities, seven state agencies, a comprehensive health science center, and a system administration office.

Each of the A&M System members has its own unique mission, history and goals. Together, they provide research, educational programs and community enhancement services that improve the lives of people in Texas and around the world.

A&M System members educate nearly 123,000 students and make more than 22 million additional educational contacts through service and outreach programs each year.

With almost 28,000 faculty and staff, the A&M System has a physical presence in 250 of the state's 254 counties and a programmatic presence in every county. The A&M System has real property holdings totaling more than 65,000 surface acres and 55,000 mineral acres.

The Office of Technology Commercialization has created bold new commercial alliances with industry and the public sector that are redefining university and public interaction. In 2011, externally funded research expenditures exceeded \$780 million to help drive the state's economy.

The A&M System, with a total operating budget of \$3.3 billion, is governed by a nine-member Board of Regents. A nonvoting student member was added in 2006. The regents appoint the chancellor, the chief executive officer who oversees the direction and operation of the system. The system's role is governed by the state's education code, Title 3, chiefly Ch. 51, Sec. 51.353 and Ch. 85, Sec. 85.17.

# THE TEXAS A&M UNIVERSITY SYSTEM

# System Members

## ★ UNIVERSITIES

- TEXAS A&M UNIVERSITY  
**R. Bowen Loftin**, President  
[www.tamu.edu](http://www.tamu.edu)

TEXAS A&M UNIVERSITY AT GALVESTON  
**Robert Smith III**, President and CEO  
[www.tamug.edu](http://www.tamug.edu)

TEXAS A&M UNIVERSITY AT QATAR  
**Mark H. Weichold**, Dean and CEO  
[www.qatar.tamu.edu](http://www.qatar.tamu.edu)

PRAIRIE VIEW A&M UNIVERSITY  
**George C. Wright**, President  
[www.pvamu.edu](http://www.pvamu.edu)

TARLETON STATE UNIVERSITY  
**F. Dominic Dottavio**, President  
[www.tarleton.edu](http://www.tarleton.edu)

TEXAS A&M INTERNATIONAL UNIVERSITY  
**Ray M. Keck**, President  
[www.tamiu.edu](http://www.tamiu.edu)

TEXAS A&M UNIVERSITY-CORPUS CHRISTI  
**Flavius C. Killebrew**, President  
[www.tamucc.edu](http://www.tamucc.edu)

TEXAS A&M UNIVERSITY-KINGSVILLE  
**Steven H. Tallant**, President  
[www.tamuk.edu](http://www.tamuk.edu)

WEST TEXAS A&M UNIVERSITY  
**J. Patrick O'Brien**, President  
[www.wtamu.edu](http://www.wtamu.edu)

TEXAS A&M UNIVERSITY-COMMERCE  
**Dan R. Jones**, President  
[www.tamu-commerce.edu](http://www.tamu-commerce.edu)

TEXAS A&M UNIVERSITY-TEXARKANA  
**C.B. Rathburn III**, President  
[www.tamut.edu](http://www.tamut.edu)

TEXAS A&M UNIVERSITY-CENTRAL TEXAS  
**Marc A. Nigliazzo**, President  
[www.ct.tamus.edu](http://www.ct.tamus.edu)

TEXAS A&M UNIVERSITY-SAN ANTONIO  
**Maria Hernandez Ferrier**, President  
[www.tamusa.tamus.edu](http://www.tamusa.tamus.edu)

● TEXAS A&M HEALTH SCIENCE CENTER  
**Nancy W. Dickey**, President and Vice Chancellor  
for Health Affairs  
[www.tamhsc.edu](http://www.tamhsc.edu)

## AGENCIES

- ★ Headquarters

● Agricultural Agencies

**Mark A. Hussey**, Vice Chancellor and Dean  
Agriculture and Life Sciences  
[agrilife.tamu.edu](http://agrilife.tamu.edu)

TEXAS AGRILIFE RESEARCH  
**Craig L. Nessler**, Director  
[agriliferesearch.tamu.edu](http://agriliferesearch.tamu.edu)

TEXAS AGRILIFE  
EXTENSION SERVICE  
**Edward G. Smith**, Director  
[agrilifeextension.tamu.edu](http://agrilifeextension.tamu.edu)

TEXAS FOREST SERVICE  
**Thomas G. Boggus**, Director and State  
Forester  
[texasforests.tamu.edu](http://texasforests.tamu.edu)

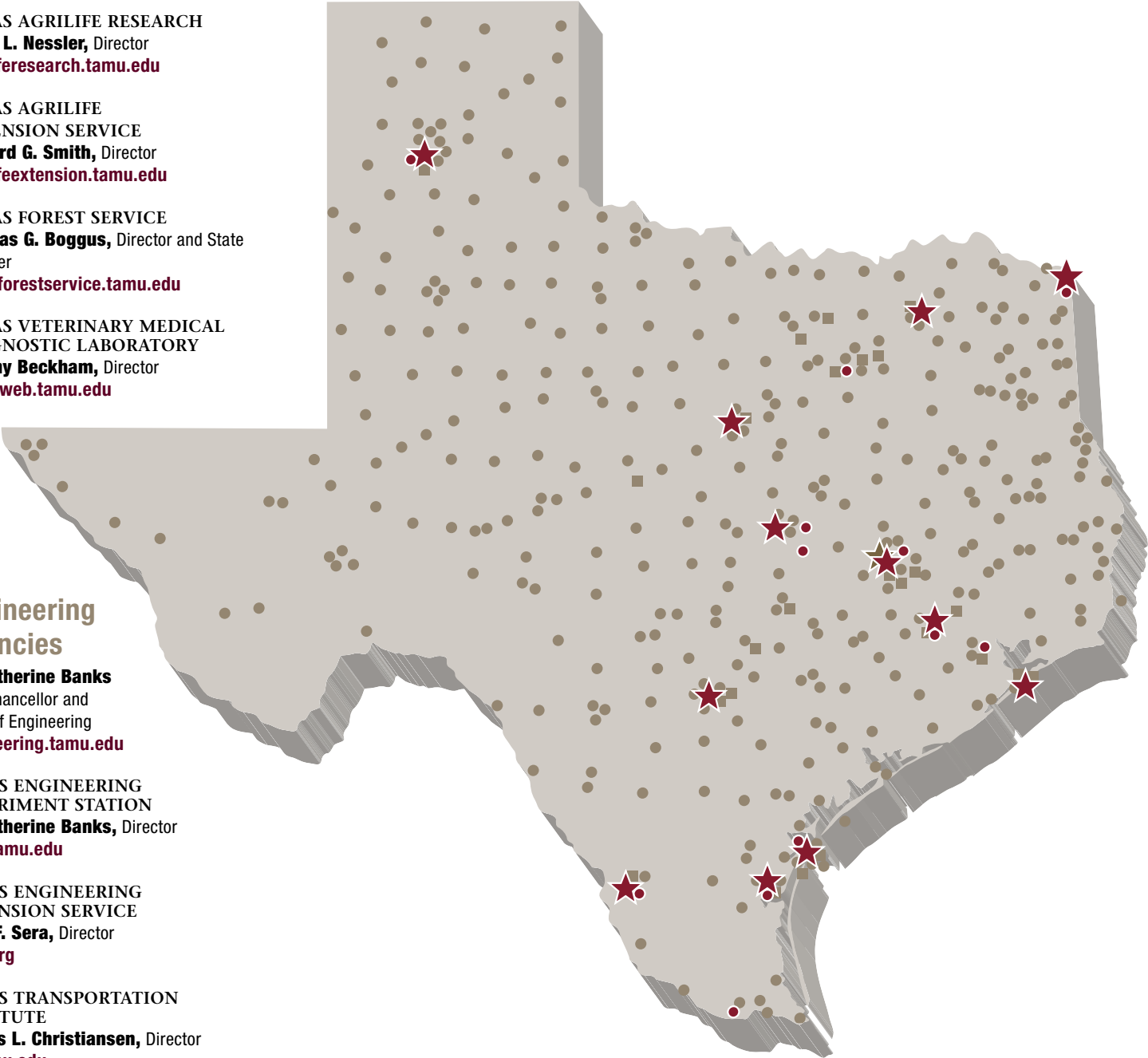
TEXAS VETERINARY MEDICAL  
DIAGNOSTIC LABORATORY  
**Tammy Beckham**, Director  
[tvmdlweb.tamu.edu](http://tvmdlweb.tamu.edu)
- Engineering Agencies

**M. Katherine Banks**  
Vice Chancellor and  
Dean of Engineering  
[engineering.tamu.edu](http://engineering.tamu.edu)

TEXAS ENGINEERING  
EXPERIMENT STATION  
**M. Katherine Banks**, Director  
[tees.tamu.edu](http://tees.tamu.edu)

TEXAS ENGINEERING  
EXTENSION SERVICE  
**Gary F. Sera**, Director  
[teex.org](http://teex.org)

TEXAS TRANSPORTATION  
INSTITUTE  
**Dennis L. Christiansen**, Director  
[tti.tamu.edu](http://tti.tamu.edu)



# Board of Regents



Seated, from left: Judy Morgan, Vice Chairman Phil Adams, Chairman Richard A. Box, and Elaine Mendoza. Standing, from left: Morris E. Foster, John D. White, Cliff Thomas, Jim Schwertner, James P. Wilson, and Student Regent Fernando Treviño Jr.

**Richard A. Box**, Chairman, Austin

**Phil Adams**, Vice Chairman, Bryan/College Station

**Morris E. Foster**, Salado

**Elaine Mendoza**, San Antonio

**Judy Morgan**, Texarkana

**Jim Schwertner**, Austin

**Cliff Thomas**, Victoria

**John D. White**, Houston

**James P. Wilson**, Sugar Land

**Fernando Trevino Jr.**, Student Regent, Del Rio

**Vickie Spillers**, Executive Secretary to the Board

## Chancellor



**John Sharp** was appointed chancellor of the 19-member Texas A&M University System in September 2011. Sharp has more than three decades of public service to his credit and a passion to make the A&M System the best system of higher education in the country.

## Faculty, Staff and Student Headcount Fall 2011

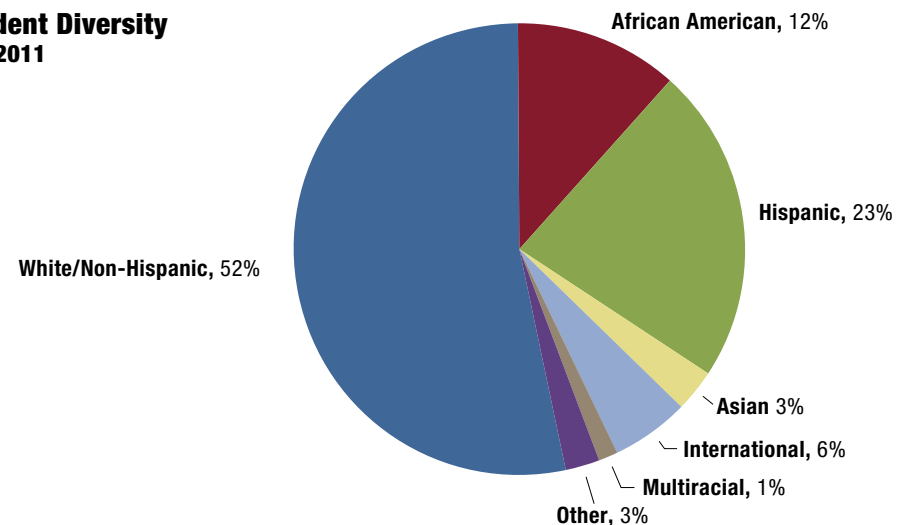
### ACADEMIC INSTITUTIONS

	Faculty	Staff	Student Enrollment
Texas A&M University	2,585	8,583	49,861
Texas A&M University at Galveston	179	244	2,035
Texas A&M University at Qatar	86	300	509
Prairie View A&M University	421	737	8,425
Tarleton State University	592	701	9,893
Texas A&M International University	280	599	7,037
Texas A&M University-Corpus Christi	575	865	10,162
Texas A&M University-Kingsville	403	636	6,733
West Texas A&M University	343	547	7,886
Texas A&M University-Commerce	522	660	10,726
Texas A&M University-Texarkana	129	157	1,907
Texas A&M University-Central Texas	141	117	2,096
Texas A&M University-San Antonio	180	159	3,554
Texas A&M Health Science Center	492	1,096	2,122
<b>Subtotal - General Academic</b>	<b>6,928</b>	<b>15,401</b>	<b>122,946</b>

### AGENCIES

System Offices	465
Texas AgriLife Research	1,241
Texas AgriLife Extension Service	1,349
Texas Forest Service	448
Texas Veterinary Medical Diagnostic Laboratory	158
Texas Engineering Experiment Station	361
Texas Engineering Extension Service	1,165
Texas Transportation Institute	388
<b>Subtotal - Agencies</b>	<b>5,575</b>
<b>Total - A&amp;M System</b>	<b>6,928 20,976 122,946</b>

## Student Diversity Fall 2011







[www.tamu.edu](http://www.tamu.edu)

ESTABLISHED ..... 1876  
COLORS ..... Maroon and white  
NICKNAME ..... Aggies  
ATHLETIC AFFILIATION ..... Big 12 Conference  
Southeastern Conference (SEC) effective July 2012



**TEXAS A&M UNIVERSITY** is the flagship university of The Texas A&M University System and home to the George Bush Presidential Library and Museum. It is located in College Station, which, together with the adjacent city of Bryan, has a population of about 208,400 and is located within 200 miles of 19 million of the state's 25 million citizens.

The state's first public institution of higher learning, Texas A&M is the nation's sixth largest university, with close to 50,000 students. The university holds land-grant, sea-grant and space-grant status, has annual research expenditures exceeding \$689 million when including

its affiliated agencies and an endowment of approximately \$5.1 billion. Texas A&M is a member of the prestigious Association of American Universities.

Average SAT scores are considerably higher than the national average, and the university consistently ranks among the top 10 public universities in the enrollment of new National Merit Scholars. More than 25 percent of the fall 2011 freshman class are first-generation college students.

TEXAS A&M UNIVERSITY  
1246 TAMU, College Station, Texas 77843 | 979-845-3211



[www.tamug.edu](http://www.tamug.edu)



TEXAS A&M UNIVERSITY AT GALVESTON  
PO Box 1675, Galveston, Texas 77553 | 877-322-4443



**TEXAS A&M UNIVERSITY AT GALVESTON**, a branch of Texas A&M University, serves as a premier university for ocean and coastal studies, research and service. Located by the sea on Galveston Bay, the campus community fosters an atmosphere emphasizing the intimate relationship between the university and the sea. As the campus expands to accommodate the growing student population, more than \$100 million in new construction projects have occurred in the past five years. TAMUG offers 10 ocean-oriented undergraduate degrees, three master's degrees and one doctoral degree in science, engineering, business, transportation, and liberal arts. The university provides more than 17 different centers and laboratories. Home to the Texas Maritime Academy—one of six state maritime academies in the United States—TAMUG also provides academic degree programs to prepare cadets for professional deck and engineering licensing for the U.S. Merchant Marine as well as officer training for the U.S. Navy.



[www.qatar.tamu.edu](http://www.qatar.tamu.edu)



**TEXAS A&M UNIVERSITY AT QATAR** offers bachelor's and master's degrees in engineering at Education City, a 2,400-acre, multi-university campus in Doha, Qatar. Education City also has branches of Carnegie Mellon, Cornell, Georgetown, Northwestern, and Virginia Commonwealth universities. More than 500 students are enrolled, and since 2007, more than 200 Aggies have received undergraduate degrees in chemical, electrical, mechanical or petroleum engineering. Graduate studies programs began in fall 2011, and the campus' first master's degrees are anticipated in May 2013.

The university's Qatar campus has a robust research program with more than \$100 million in projects. Texas A&M at Qatar is wholly funded by the Qatar Foundation for Education, Science and Community Development.



TEXAS A&M UNIVERSITY AT QATAR  
PO Box 23874, Doha, Qatar | 974-4423-0010





[www.pvamu.edu](http://www.pvamu.edu)

ESTABLISHED .....1876  
 JOINED A&M SYSTEM.....1973  
 COLORS .....Royal purple and gold  
 NICKNAME.....Panthers  
 ATHLETIC  
 AFFILIATION .....Southwestern Athletic Conference



[www.tarleton.edu](http://www.tarleton.edu)

ESTABLISHED .....1899  
 JOINED A&M SYSTEM.....1917  
 COLORS .....Purple and white  
 NICKNAME.....Texans  
 ATHLETIC AFFILIATION .....Lone Star Conference



As a land-grant institution, **PRAIRIE VIEW A&M UNIVERSITY** is grounded in the commitment of educating students to be productive citizens of their communities. As the second oldest public institution in Texas, Prairie View has an established a reputation for producing engineers, corporate leaders, nurses, and educators. The close proximity to Houston, coupled with its quiet rural location, make the university an ideal place to study, learn and explore.

The campus of PVAMU is rapidly changing to adapt to the modern day features that students need. Recent renovations and upgrades have enhanced the scenery of the campus, adding to the 1,502 acres of lush green lawns and historic buildings.

PVAMU offers more than 100 bachelor's, master's and doctoral degree programs. Students can enjoy the convenience of centralized offerings in education, nursing and community development at the university's new Northwest Houston Center.



**TARLETON STATE UNIVERSITY** offers the value of a Texas A&M University System degree with its own brand of personal attention, individual opportunities, history, traditions and real community. Located in the heart of Stephenville and encompassing a 173-acre main campus just an hour southwest from the metro opportunities of Fort Worth, Tarleton is one of the best university values in Texas and the perfect place for students to begin a future.

Tarleton offers the resources of a major public university, including 64 undergraduate, 24 graduate and a Doctor of Education degree, as well as cutting edge academic facilities and faculty experts with extensive

university and industry experience—all with the personal attention, warmth and faculty interaction expected from a smaller college.

Tarleton has extended its reach beyond Stephenville and is rapidly expanding undergraduate and graduate programs online and in Waco, Midlothian and the Southwest Metroplex including Johnson, Parker and Tarrant counties.

**PRAIRIE VIEW A&M UNIVERSITY**

FM 1098 Road and University Drive, Prairie View, Texas 77446 | 936-261-3311

**TARLETON STATE UNIVERSITY**

1333 West Washington, Stephenville, Texas 76402 | 254-968-9000





[www.tamiu.edu](http://www.tamiu.edu)

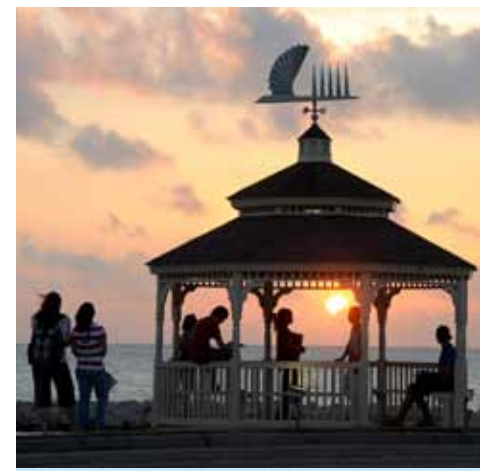
ESTABLISHED .....1970  
JOINED A&M SYSTEM.....1989  
COLORS .....Maroon and silver  
NICKNAME.....Dustdevils  
ATHLETIC AFFILIATION.....NCAA Division II,  
Heartland Conference



TEXAS A&M UNIVERSITY  
CORPUS CHRISTI

[www.tamucc.edu](http://www.tamucc.edu)

ESTABLISHED .....1947  
JOINED A&M SYSTEM.....1989  
COLORS .....Blue and green  
NICKNAME.....Islanders  
ATHLETIC AFFILIATION..... Southland Conference



**TEXAS A&M INTERNATIONAL UNIVERSITY** is an international university, poised at an international crossroads and the cultural and intellectual hub of a vibrant bilingual and bicultural community. TAMIU provides more than 7,000 students with a learning environment anchored by the highest quality programs built on a solid academic foundation in the arts and sciences. The university's 300-acre campus is home to a diverse student body that includes representatives from over 25 countries. It also boasts its own planetarium, a memorial garden and the 11-sport NCAA Division II Heartland Conference Dustdevil athletics program.

To fulfill its mission, the university offers a range of bachelor's and master's programs and the Doctor of Philosophy degree in international business administration. Collaborative degree programs with other A&M System campuses are also available. All programs focus on developing undergraduate and graduate offerings with a progressive international agenda for global study, leadership and understanding across all disciplines.

TEXAS A&M INTERNATIONAL UNIVERSITY  
5201 University Boulevard, Laredo, Texas 78041 | 956-326-2001



**TEXAS A&M UNIVERSITY-CORPUS CHRISTI**, the nation's only university located on its own island, is nestled along the South Texas gulf coast. Palm tree-lined walkways dotted with tropical flowers and a beautifully restored beach welcome students and visitors to campus.

The "Island University" easily incorporates its tropical surroundings into a challenging academic curriculum, which includes 13 research centers and institutes focused on various environmental science fields. The Harte Research Institute for Gulf of Mexico Studies recently added a doctoral degree to its highly regarded academic program, and the College of

Science and Engineering offers an interdisciplinary program in marine biology that allows students to earn postgraduate degrees utilizing the resources of Texas A&M-Corpus Christi, Texas A&M University and Texas A&M University at Galveston. The program is the first of its kind in any state adjacent to the Gulf of Mexico.

TEXAS A&M UNIVERSITY-CORPUS CHRISTI  
6300 Ocean Drive, Corpus Christi, Texas 78412 | 361-825-5700





[www.tamuk.edu](http://www.tamuk.edu)

ESTABLISHED ..... 1925  
 JOINED A&M SYSTEM ..... 1989  
 COLORS ..... Blue and gold  
 NICKNAME ..... Javelinas  
 ATHLETIC AFFILIATION ..... Lone Star Conference



[www.wtamu.edu](http://www.wtamu.edu)

ESTABLISHED ..... 1910  
 JOINED A&M SYSTEM ..... 1990  
 COLORS ..... Maroon and white  
 NICKNAME ..... Buffs  
 ATHLETIC AFFILIATION ..... Lone Star Conference



**TEXAS A&M UNIVERSITY-KINGSVILLE** is the oldest continuously operating public institution of higher learning in South Texas. The university offers more academic degrees and programs than any other college or university in the region. Degrees include nationally-ranked programs in environmental engineering and agriculture, expanding kinesiology and music departments, and respected degrees in social work and animal and wildlife sciences.

Texas A&M-Kingsville recently opened two new suite-style residence halls, a student recreation center and dining hall, with more housing and dining options coming in the next two years. These expansions equal a

thriving campus that offers its students an all-inclusive university environment, with comfortable residences and a variety of food and recreational activities within walking distance of the classroom.

The university also has a vibrant, successful athletic department, with the Javelina football team having earned seven national championships.

TEXAS A&M UNIVERSITY-KINGSVILLE  
 700 University Boulevard, Kingsville, Texas 78363 | 361-593-2111



**WEST TEXAS A&M UNIVERSITY** located in Canyon, is the northernmost four-year public university in Texas and serves a diverse population of almost 8,000 students. It's a friendly campus where faculty is accessible, administrators are approachable, undergraduates are taught by tenured professors, and names are still more important than numbers. WTAMU students enjoy the ultimate college experience in an atmosphere committed to personal attention, teaching excellence, and programs that are engaging and challenging.

All students are encouraged to engage in meaningful research projects, and opportunities for academic growth also are available through the university's Attebury Honors Program. Outside of the classroom, countless activities are available for students to build friendships, foster community service interests and promote strong leadership skills. Many academic, social or mutual interest organizations are available, or students can compete in intramural games at the university's new Buffalo Sports Park or cheer for the Buffs and Lady Buffs.

WEST TEXAS A&M UNIVERSITY  
 2501 4th Avenue, Canyon, Texas 79016 | 806-651-0000





[www.tamu-commerce.edu](http://www.tamu-commerce.edu)

ESTABLISHED ..... 1889  
JOINED A&M SYSTEM ..... 1996  
COLORS ..... Blue and gold  
NICKNAME ..... Lions  
ATHLETIC AFFILIATION ... Lone Star Conference



[www.tamut.edu](http://www.tamut.edu)

ESTABLISHED ..... 1971  
JOINED A&M SYSTEM ..... 1996  
COLORS ..... Blue, gold and maroon  
NICKNAME ..... Eagles



Since 1889, TEXAS A&M UNIVERSITY-COMMERCE has transformed lives. The university has added online degree programs, as well as traditional instruction at the Commerce campus and locations in Corsicana, Midlothian, Mesquite, downtown Dallas, and McKinney. It also has increased the amount of financial aid and support available to students with the addition of 50 full-ride Honors College scholarships for high-achieving freshmen, and a second-tier scholarship program, Regents Scholars, that rewards high-achieving students and school leaders.

The Student Access and Success Center is a one-stop shop approach that removes barriers to admissions, financial aid and advising information.

The university also has 10 NCAA Division II athletic teams, a thriving Greek system and over 120 student organizations. A new student center and new residence halls complement the university's mission to attract and graduate students who will become future global leaders. With the highest employment rate for graduates of any university in the Northeast Texas region, the university's acclaim carries over to more than 100 degree programs, including master's and doctoral programs.

TEXAS A&M UNIVERSITY-COMMERCE  
2600 South Neal Street, Commerce, Texas 75429 | 903-886-5000



TEXAS A&M UNIVERSITY-TEXARKANA is located on the Texas-Arkansas border. The university has been transformed into a comprehensive regional university at a beautiful new 375-acre campus setting near Bringle Lake. The university has the lowest university tuition rates in Texas and Arkansas.

A&M-Texarkana recently opened its first residence hall, Bringle Lake Village. The state-of-the-art facility provides students many amenities such as a swimming pool and sand volleyball court. All units are furnished and include flat-screen televisions, microwave ovens and refrigerators. The current occupancy rate is almost 80 percent.

Construction will begin soon on a second residence hall and dining hall facility that are scheduled to open in fall 2013.

The university has launched Eagle Athletics, which is comprised of five club sports including soccer, golf, crew, cross country, and tennis. A dance team has also been established.

The university has a satellite campus location on the campus of Northeast Texas Community College near Mt. Pleasant.

TEXAS A&M UNIVERSITY-TEXARKANA  
7101 University Avenue, Texarkana, Texas 75503 | 903-223-3000





**TEXAS A&M**  
**UNIVERSITY**  
**CENTRAL TEXAS**

[www.ct.tamus.edu](http://www.ct.tamus.edu)

ESTABLISHED AS SYSTEM CENTER.....1999

ESTABLISHED AS STAND-ALONE  
UNIVERSITY.....2009

COLORS ..... Navy, maroon and silver

NICKNAME..... Warriors



[www.tamusa.tamu.edu](http://www.tamusa.tamu.edu)

ESTABLISHED AS SYSTEM CENTER.....2000

ESTABLISHED AS STAND-ALONE  
UNIVERSITY.....2009

COLORS ..... Black, silver and "Madla Maroon"

NICKNAME..... Jaguars



**TEXAS A&M UNIVERSITY-CENTRAL TEXAS**, an upper-level, military-friendly institution, offers dozens of undergraduate and graduate degrees. Students take classes at several convenient campus locations, including sites at community colleges and Fort Hood. Flexible course schedules are offered weekdays, nights, weekends, and online to accommodate the needs of the expanding student population.

As a GoArmyEd partner, the university provides a virtual gateway for active-duty soldiers seeking tuition assistance for classroom, distance learning and eArmyU college courses. In addition, A&M-Central Texas

is one of only eight universities in the country to offer the VetSuccess on Campus program, which provides assistance to veteran-students during their transition into college life.

The new A&M-Central Texas campus, located on 662 beautiful acres of land that was transferred to the Texas A&M System from the U.S. Army, is scheduled to open its doors in the summer of 2012.

**TEXAS A&M UNIVERSITY-CENTRAL TEXAS**  
1901 South Clear Creek Road, Killeen, Texas 76549 | 254-519-5400



**TEXAS A&M UNIVERSITY-SAN ANTONIO**, one of the fastest growing universities in the state, opened the first building of its 700-acre campus in South San Antonio in fall 2011. Students choose from a variety of degrees at both the undergraduate and graduate level with the help of dedicated faculty and staff who prepare and empower students to be innovative and contributing members of a global society.

A military-embracing university, the School of Business is now housed at the Brooks City-Base research center, a former Air Force base, where students work toward degrees such as a Master of Business Administration or professional accountancy, alongside undergraduate

programs in cyber security and information technology. The School of Education and Kinesiology launched a revolutionary teacher preparation program in fall 2011, while the growing School of Arts & Sciences gives students real-life research opportunities and places graduates in many fields including local government, law enforcement and human service agencies. Through a partnership with area high schools and San Antonio's community college system, Texas A&M-San Antonio is offering a special Bachelor of Applied Arts and Sciences in information technology, an "affordable degree" at a cost under \$10,000.

**TEXAS A&M UNIVERSITY-SAN ANTONIO**  
One University Way, San Antonio, TX 78224 | 210-784-1000





[www.tamhsc.edu](http://www.tamhsc.edu)

ESTABLISHED .....1999  
2011 RESEARCH FUNDING .....\$71.7M



[agriliferesearch.tamu.edu](http://agriliferesearch.tamu.edu)

ESTABLISHED .....1888  
NUMBER OF RESEARCH PROJECTS.....579  
2011 RESEARCH FUNDING .....\$190.1M  
NUMBER OF CENTERS OR DIVISIONS..... 13



**THE TEXAS A&M HEALTH SCIENCE CENTER** dedicates the collective expertise of its campus community to providing the state with high-quality health education, outreach and research. Faculty, staff and students are united by a belief that all people, regardless of geography, economics or culture, deserve the benefits of compassionate care, superior science and exceptional health education.

TAMHSC teaches a small number of undergraduates, but the majority of its students are graduate, professional and advanced post-doctoral. The health science center has campuses in Bryan-College Station, Dallas, Temple, Houston, Round Rock, Kingsville, Corpus Christi, and McAllen.

Its six colleges are the Baylor College of Dentistry, College of Medicine, College of Nursing, School of Graduate Studies, Irma Lerma Rangel College of Pharmacy, and School of Rural Public Health. Other units include the Institute of Biosciences and Technology and Coastal Bend Health Education Center.



**TEXAS AGRILIFE RESEARCH** is the state's premier research and technology development agency in agriculture, natural resources and the life sciences. Headquartered in College Station, AgriLife Research has a statewide presence, with scientists and research staff on other Texas A&M System campuses and at the 13 regional Texas AgriLife Research and Extension Centers. The agency conducts basic and applied research to improve the productivity, efficiency and profitability of agriculture, with a parallel focus on conserving natural resources and protecting the environment. AgriLife Research has 550 doctoral-level scientists, many of whom are internationally recognized for their work. They conduct hundreds of

projects spanning many scientific disciplines, from genetics and genomics to air and water quality. Economic gains from investments in Texas' public agricultural research have reached more than \$3.6 billion over the past three decades.

TEXAS A&M HEALTH SCIENCE CENTER  
8441 State Highway 47, Clinical Building 1, Bryan, Texas 77807 | 979-436-9100

TEXAS AGRILIFE RESEARCH  
600 John Kimbrough Boulevard, Suite 512 | 2142 TAMU, College Station, Texas 77843 | 979-845-8486



[agrilifeextension.tamu.edu](http://agrilifeextension.tamu.edu)

ESTABLISHED .....1915  
NUMBER OF TEACHING CONTACTS... 26 million  
NUMBER OF PARTNERS AND COLLABORATORS  
FOR PLANNED PROGRAMS.....23,000  
NUMBER OF VOLUNTEERS SUPPORTING  
EXTENSION PROGRAMS.....107,000  
NUMBER OF COUNTIES WITH  
AN EXTENSION OFFICE.....250



[texasforestservice.tamu.edu](http://texasforestservice.tamu.edu)

ESTABLISHED .....1915  
NUMBER OF TEXAS COUNTIES SERVED.....254



A unique education agency, the **TEXAS AGRILIFE EXTENSION SERVICE** reaches into every Texas county, extending its expertise and programs to address local priority needs across the state. Current efforts include mitigating drought impacts and conserving water use in homes, landscapes and production agriculture. Improving emergency management, food security, and human diet and health are also major aims.

The agency demonstrates the latest technology and proven practices to improve the state's food and fiber system, which serves all Texas consumers and contributes up to 10 percent of the state's gross

domestic product. Also ongoing is Texas 4-H, the agency's primary youth program, which engages some 600,000 youth every year in learning projects, leadership development and community service.

In addition, AgriLife Extension conducts numerous certification programs, annually training thousands who render important services. The agency achieves this outreach via its statewide network of professional educators, volunteers and county offices.



As one of only seven state agencies, **TEXAS FOREST SERVICE** is a proud member of The Texas A&M University System. Texas Forest Service is recognized throughout the state and nation as a leader in forestry and as the lead agency for incident response in Texas.

2011 has seen the worst wildfire season in Texas history. It was fueled by the hottest summer on record and a prolonged historic drought. More than 30,500 wildfires burned 3.9 million acres, destroying 2,946 Texas homes and claimed 10 lives. Texas Forest Service provided people, equipment and leadership on active wildfire response and worked closely with local fire departments to save more than 39,000 homes and protect lives and property.

Texas Forest Service also works to ensure that the state's forests, trees and related natural resources are conserved and continue to provide a sustainable flow of environmental and economic benefits.

**TEXAS AGRILIFE EXTENSION SERVICE**

Agriculture and Life Sciences Building, 600 John Kimbrough Boulevard, Suite 509 | 7101 TAMU,  
College Station, Texas 77843-7101 | 979-845-7800

**TEXAS FOREST SERVICE**

200 Technology Way, College Station, Texas 77845 | 979-458-6606





tvmdl.tamu.edu

ESTABLISHED .....1967  
ANNUAL CASELOAD .....180,000  
NUMBER OF LABORATORIES .....4  
STAFF HEADCOUNT .....150



tees.tamu.edu

ESTABLISHED .....1914  
ACADEMIC PARTNERS .....24  
SPECIALIZED RESEARCH CENTERS .....25  
RESEARCH PROJECTS .....4,442  
2011 RESEARCH EXPENDITURES .....\$164.6M  
COLLABORATIONS .....864  
INDUSTRIAL SPONSORS .....2,625



One of the busiest diagnostic laboratories in the nation, **TEXAS VETERINARY MEDICAL DIAGNOSTIC LABORATORY** receives more than 180,000 submissions each year from Texas, neighboring states and around the world – and runs nearly 1.2 million tests annually. Strategically located in the strongest livestock and poultry regions of the state, TVMDL laboratories are uniquely positioned to serve the animal industries of Texas. TVMDL also runs tests to help protect companion animals, racing animals, exotic animals, zoo animals, and wildlife. Its primary clients are animal owners and veterinarians along with state and federal agencies. As one of 12 core laboratories in the National Animal Health Laboratory

Network, TVMDL acts as the backbone of a statewide, regional and global animal and zoonotic disease surveillance system that protects the state's \$11.4 billion livestock industry as well as the companion animal and public health sectors.



**TEXAS ENGINEERING EXPERIMENT STATION** has been performing quality engineering research and developing technology to address state and national problems for nearly 100 years. TEES partners with industries, communities, government agencies, community colleges and universities—in and out of the Texas A&M System—to find solutions to improve quality of life, foster economic development and enhance education. TEES brings significant research dollars to Texas from federal and private sectors, and has been successful in attracting \$16 for each state dollar appropriated. TEES also helps improve the state's workforce by engaging more than 1,494 graduate and undergraduate students

in research each year. Research activities focus on relevant needs in areas including energy and the environment, transportation and infrastructure, national security, health care, informatics, workforce development, and education. The agency services Texas with headquarters in College Station and specialized research centers and regional division offices throughout the state.

TEXAS VETERINARY MEDICAL DIAGNOSTIC LABORATORY  
1 Sippel Road | 4471 TAMU, College Station, Texas 77843 | 979-845-3414

TEXAS ENGINEERING EXPERIMENT STATION  
301 Wisenbaker Engineering Research Center | 3577 TAMU  
College Station, Texas 77843-3577 | 979-845-6946





[www.teex.org](http://www.teex.org)

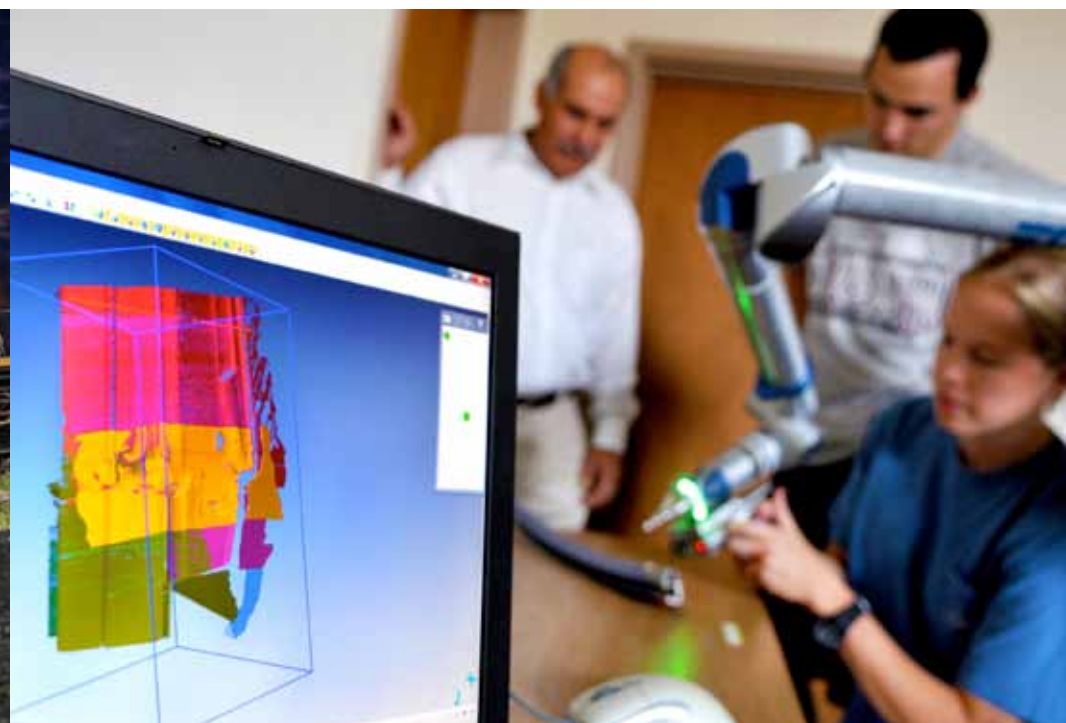
ESTABLISHED .....1948  
 NUMBER OF EDUCATIONAL/OUTREACH  
 CLASSES ANNUALLY .....5,400  
 NUMBER OF PEOPLE  
 SERVED ANNUALLY .....180,000



A Member of The Texas A&M University System

[tti.tamu.edu](http://tti.tamu.edu)

ESTABLISHED .....1950  
 2011 RESEARCH EXPENDITURES .....\$50.1M  
 NUMBER OF RESEARCH  
 PROJECTS ANNUALLY .....>600  
 STATEWIDE LOCATIONS ..... 10  
 NUMBER OF STATE AND NATIONAL  
 RESEARCH CENTERS ..... 10



**TEXAS ENGINEERING EXTENSION SERVICE** is an internationally recognized leader in the delivery of emergency response, homeland security and workforce training, exercises, technical assistance, and economic development. Last year, TEEX served more than 180,000 people from every U.S. state and territory, and 73 countries worldwide.

TEEX sponsors the state's elite urban search and rescue team, Texas Task Force 1, oversees the swift-water rescue program and coordinates the Texas Public Works Response Team, saving countless lives and untold millions of dollars. TEEX also operates a comprehensive 280-acre emergency preparedness campus, which includes some of the world's top training facilities in the Brayton Fire Training Field, Disaster City® and the

Emergency Operations Training Center, as well as state-of-the-art facilities for law enforcement and UXO training. As part of the National Domestic Preparedness Consortium and home to the National Emergency Response and Rescue Training Center, TEEX has been a leader in homeland security training since 1998.



**TEXAS TRANSPORTATION INSTITUTE** seeks solutions to the problems and challenges facing all modes of transportation. The Institute conducts 600 research projects annually with over 200 sponsors at all levels of government and the private sector. At any one time, TTI has research sponsors in about 30 states and has conducted research for sponsors in all 50 states and 20 foreign countries.

Through strategies and products developed through its research program, TTI has saved the state and nation billions of dollars. The Institute has made significant advancements in transportation safety, mobility, planning, systems, infrastructure, the environment and other vital areas. Its research has a proven impact, resulting in lives, time and resources saved.

With headquarters and laboratories on the Texas A&M University campus in College Station, TTI also maintains several facilities in Bryan, including roadside safety, visibility, pavements, environmental, and emissions testing facilities at the university's Riverside Campus.

**TEXAS ENGINEERING EXTENSION SERVICE**  
 200 Technology Way, College Station, Texas 77845 | 979-458-6800

**TEXAS TRANSPORTATION INSTITUTE**  
 3135 TAMU, College Station, Texas 77843-3135 | 979-845-1713



# Frequently Asked Questions

## What is The Texas A&M University System?

The A&M System is one of the largest systems of higher education in the nation, with a statewide network of 11 universities, seven state agencies and a comprehensive health science center. A&M System members educate nearly 123,000 students and reach another 22 million people through service each year. With almost 28,000 faculty and staff, the A&M System has a physical presence in 250 of the state's 254 counties and a programmatic presence in every one. In 2011, externally funded research expenditures exceeded \$780 million to help drive the state's economy.

## When was the A&M System established?

The Texas A&M University System was officially established in 1948. The original members were Texas A&M University, Prairie View A&M University, Tarleton State University, Texas Forest Service, Texas Engineering Experiment Station, Texas Engineering Extension Service, Texas AgriLife Extension Service (formerly Texas Cooperative Extension) and Texas AgriLife Research (formerly Texas Agricultural Experiment Station).

Today, the Texas A&M System provides oversight and leadership for 11 universities, seven state agencies and a health science center. Its role is governed by the state's education code (Title 3, chiefly Ch. 51, Sec. 51.353 and Ch. 85, Sec. 85.17). Responsibilities include systemwide planning, coordination and execution of the policies of The Texas A&M University System Board of Regents.

## What does “A” and “M” stand for?

Texas A&M, the state's first public institution of higher education, was opened on Oct. 4, 1876, as the Agricultural and Mechanical College of Texas. Both Texas A&M and Prairie View A&M owe their origin to the Morrill Acts of 1862 and 1890, which established the nation's land-grant college system. When Texas A&M gained university status in 1963, the “A&M” was incorporated into the official name in deference to the institution's history and traditions, but the individual letters no longer explicitly stand for anything.

## The A&M System is the state's land-grant system. What does that mean?

A land-grant college or university is an institution that has been designated by its state legislature or Congress to receive the benefits of the Morrill Acts of 1862 and 1890. The original mission of these institutions, as set forth in the first Morrill Act, was to teach agriculture, military tactics and the mechanical arts as well as classical studies so that members of the working classes could obtain a practical education.

The A&M System's agencies, which conduct research and bring practical applications of research findings to the people of Texas, also came out of the land-grant system. There is now at least one land-grant institution in every state and territory of the United States, as well as in the District of Columbia.

## How is the A&M System governed?

The A&M System is governed by a nine-member Board of Regents, appointed by the governor and confirmed by the Texas Senate for six-year terms. A nonvoting student member was added in 2006. The A&M System chancellor oversees the day-to-day administration, and each of the A&M System's 19 members has a president, CEO or director.

## What is the mission of the A&M System?

The mission of The Texas A&M University System is to provide education, conduct research, commercialize technology, offer training, and deliver services for the people of Texas and beyond through its universities, state agencies and health science center.

## Does the A&M System have a central admissions office?

No. Students must contact directly the preferred A&M System institution's admission office. Information about these institutions can be found on the system's website, [www.tamus.edu](http://www.tamus.edu).



Chancellor John Sharp

TEXAS A&M UNIVERSITY AT GALVESTON

## Notes



## UNIVERSITIES

Texas A&M University  
Prairie View A&M University  
Tarleton State University  
Texas A&M International University  
Texas A&M University-Corpus Christi  
Texas A&M University-Kingsville  
West Texas A&M University  
Texas A&M University-Commerce  
Texas A&M University-Texarkana  
Texas A&M University-Central Texas  
Texas A&M University-San Antonio  
Texas A&M Health Science Center

## AGENCIES

Texas AgriLife Research  
Texas Engineering Experiment Station  
Texas AgriLife Extension Service  
Texas Forest Service  
Texas Engineering Extension Service  
Texas Transportation Institute  
Texas Veterinary Medical Diagnostic Laboratory

## THE TEXAS A&M UNIVERSITY SYSTEM

301 Tarrow St., College Station, Texas 77840-7896  
[tamus.edu](http://tamus.edu)