

COUNTRY RISK SUMMARIES

Powered by FocusPoint International, Inc.



Report for Week Ending April 24th, 2022

Latest Updates: Afghanistan, Burma (Myanmar), Cameroon, Chad, Colombia, Democratic Republic of the Congo (DRC), Ethiopia, India, Iraq, Israel, Libya, Mali, Mexico, Niger, Nigeria, Pakistan, Philippines, Russia, Somalia, South Sudan, Ukraine, Venezuela.

- **Afghanistan:** On April 21, local sources reported that an unconfirmed number of people were killed after a bomb exploded at the Shi'a Seh Dekan Mosque near Jawzjani market in Mazar-i-Sharif, Balkh province, during early afternoon hours local time. No further details were immediately available.
- **Afghanistan:** On April 21, updated reports indicated that at least 25 people were killed and dozens of others injured after a bomb went off at the Shi'a Seh Dekan Mosque near Jawzjani market in Mazar-i-Sharif, Balkh province, during early afternoon hours local time. No group claimed immediate responsibility for the attack.
- **Afghanistan:** On April 22, local media reported that at least three Taliban fighters were shot dead in an exchange of gunfire with unidentified assailants in the Jalalabad Fruit Market. No group immediately claimed responsibility for the attack.
- **Afghanistan:** On April 22, local sources reported that at least 32 people were killed and 50 others injured after a bomb went off at the Mawlawi Sekandar Mosque in Imam Sahib, Kunduz, at around 16:30 local time (12:00 GMT). No group claimed immediate responsibility for the attack.
- **Afghanistan:** On April 19, local sources indicated that an explosion occurred at and around the Abdul Rahim-e-Shahid High School and another occurred at and around the Mumtaz Training Center in western Kabul during morning hours local time. Information regarding casualties and the cause of the explosions was not immediately available.
- **Afghanistan:** On April 19, updated reports indicated that at least six people were killed and 11 others were injured after explosions targeted the Abdul Rahim-e-Shahid High School and the Mumtaz Training Center in western Kabul during morning hours local time. There was no immediate claim of responsibility for the attacks.
- **Burma (Myanmar):** On April 21, local sources indicated that at least two civilians were killed near a police station on Bayint Naung Road in Kamayut township, Yangon, at around early morning hours local time, after security forces allegedly opened fire following at least six explosions at the police station. No further details were immediately available.

866-340-8569

info@wwfocus.com

www.focuspointintl.com





- **Cameroon:** On April 18, at least 100 Islamic State of West Africa Province (ISWAP) militants were killed, while 18 soldiers were injured in the Lake Chad Region, including Borno state in Nigeria, Diffa region in Niger, the Far North Region's Logone-et-Chari department in Cameroon, and Lac and Hadjer-Lamis regions in Chad, as of 17 April amid an ongoing multinational military operation.
- **Cameroon:** On April 19, local media reported that at least one person was killed during an attack by Boko Haram militants in the area of Lock Cha in Tourou, located along the border with Nigeria in Mayo-Tsanaga department, Far North region, at around 23:00 local time (22:00 GMT) on 17 April.
- **Chad:** On April 18, at least 100 Islamic State of West Africa Province (ISWAP) militants were killed, while 18 soldiers were injured in the Lake Chad Region, including Borno state in Nigeria, Diffa region in Niger, the Far North Region's Logone-et-Chari department in Cameroon, and Lac and Hadjer-Lamis regions in Chad, as of 17 April amid an ongoing multinational military operation.
- **Colombia:** On April 20, local media reported that at least six soldiers were killed and six others injured, while three more went missing, after their convoy struck an improvised explosive device (IED) in an ambush by suspected Gulf Clan members in Nutibara, Frontino municipality of Antioquia department.
- **Democratic Republic of Congo (DRC):** On April 18, local media reported that at least five people were killed and 12 others abducted by Cooperative for the Development of Congo (CODECO) militants following clashes with the Zaire Defense militia in Balabala, a village between Djugu and Mambasa territories, Ituri province, on 17 April.
- **Democratic Republic of Congo (DRC):** On April 21, local media reported that at least one civilian was killed and two others injured when unidentified gunmen raided the village of Kibarizo near Kitshanga in Masisi territory, North Kivu, at around 20:00 local time (18:00 GMT) on 19 April. No group claimed immediate responsibility for the attack.
- **Democratic Republic of Congo (DRC):** On April 21, local media reported that at least 12 people were killed and 12 others abducted, while thousands more were displaced by Allied Democratic Forces (ADF) militants in Mukasila and Kangubu, located near Komanda in Ituri province, early on 20 April. Security operations were underway in the area.
- **Ethiopia:** On April 21, media reports indicated that at least 20 people were killed and dozens more were wounded following recent fighting between the Oromo Liberation (OLA) rebel group and Amhara Fano militiamen in remote areas of Amhara region, located near the Jilee Dhummuugaa district of Oromo zone. At least 5,000 people were also displaced due to the fighting.
- **India:** On April 20, local sources indicated that at least 1,500 police officers were deployed to the Jahangirpuri area of New Delhi from morning hours local time, due to possible violent protests ahead of an anti-encroachment drive. Earlier, at least nine people were injured and

866-340-8569

info@wwfocus.com

www.focuspointintl.com





14 others arrested following clashes between members of two rivaling communities during a Shobha Yatra procession.

- **India:** On April 21, at least one civilian and three soldiers were injured amid clashes between security forces and militants in the Malwa area of Baramulla district, Jammu and Kashmir region, since morning hours local time. The gunfight remained ongoing in the area.
- **India:** On April 22, initial reports indicated that security forces were engaged in a gunfight with a group of militants in the Sunjwan area of Jammu, Jammu and Kashmir region, as of morning hours local time. Casualty figures were not available.
- **Iraq:** On April 18, the Turkish Armed Forces (TAF) launched a land and air operation targeting Metina, Zap and Avasin-Basyan areas in parts of Kurdistan autonomous region, including Duhok governorate and Mergasor district in Erbil governorate, as of early morning hours local time against alleged militants.
- **Israel:** On April 21, a policeman shot dead a suspected Palestinian assailant wielding a knife at a building site in Ashkelon, Southern District, during early morning hours local time; the policeman was slightly injured. The assailant was a resident of Hebron in the West Bank.
- **Israel:** On April 21, updated sources indicated that at least eight people were injured at and around the Al-Aqsa Mosque in Jerusalem's Old City, during morning hours local time after Israeli soldiers allegedly fired tear gas to disperse crowds. Earlier, it was reported that Palestinian youths barricaded themselves in the main prayer hall and hurled firecrackers at security personnel.
- **Israel:** On April 22, local sources indicated that Israeli security forces stormed the Al-Isawiya area of East Jerusalem overnight, firing sound bombs, tear gas and rubber-coated metal bullets at protesters gathered in the area. Casualty numbers were not immediately available. Similar clashes were reported in Hebron, Qalqilya and east of Nablus in the West Bank.
- **Israel:** On April 22, local sources indicated that at least one person was injured as Israeli forces had entered the Al-Aqsa mosque compound and were targeting worshippers with tear gas and rubber bullets as of early morning hours local time.
- **Israel:** On April 22, local sources indicated that at least 30 people were injured amidst ongoing clashes between Israeli security forces and worshippers during morning hours local time inside the Al-Aqsa mosque compound, Jerusalem.
- **Libya:** On April 18, local sources indicated that at least three soldiers were wounded when a vehicle-borne improvised explosive device (VBIED) detonated near a Libyan National Army (LNA) checkpoint in Umm Al Aranib, Murzuq district, Fezzan region, during evening hours local time. No group claimed immediate responsibility for the blast.
- **Mali:** On April 21, local sources reported that multiple people were killed and injured when government soldiers launched a security operation in Hombori, Mopti region, on 19 April, after

866-340-8569

info@wwfocus.com

www.focuspointintl.com





a Russian military advisor was killed by a roadside improvised explosive device (IED) blast in the area.

- **Mexico:** On April 21, local reports indicated that a shootout erupted between security forces and armed criminals in Cocoyotla, Coatlán del Río municipality, Morelos state, as of afternoon hours local time. The Alpuyecá-Grutas highway was closed by the police due to the ongoing operation. There were no immediate reports of casualties.
- **Niger:** On April 20, at least 100 Islamic State of West Africa Province (ISWAP) militants were killed, while 18 soldiers were injured in the Lake Chad Region, including Borno state in Nigeria, Diffa region in Niger, the Far North Region's Logone-et-Chari department in Cameroon, and Lac and Hadjer-Lamis regions in Chad, as of 17 April amid an ongoing multinational military operation.
- **Nigeria:** On April 18, local sources reported that at least four people were killed and scores of others abducted in Gwada town's Kadna, Naknuwape and Tafila areas, Shiroro local government area (LGA), Niger state, during evening hours local time on 16 April due to attacks by unidentified gunmen. Security forces were mobilised to affected areas.
- **Nigeria:** On April 18, updated reports indicated that at least 25 Indigenous People of Biafra (IPOB) militants, including a commander known as Evil Forest, were killed following clashes with police over the enforcement of an IPOB-mandated shutdown strike in Ihioma and Banana Junction, Orlu local government area (LGA), Imo state, on 17 April.
- **Nigeria:** On April 19, local media reported that at least three people were killed and 19 others injured in a suspected bomb exploded at a cattle market in Iware, Ardo Kola local government area (LGA), Taraba state, during evening hours local time. Further details were not immediately available.
- **Nigeria:** On April 20, local media reported that at least three people were killed and several others kidnapped when suspected bandits attacked Dutsen Reme and Gozaki communities in Kafur local government area (LGA) and Dan Rimi community in Malumfashi LGA in Katsina state, during morning hours local time.
- **Nigeria:** On April 20, security sources indicated that at least two people were killed when unidentified gunmen opened fire on a convoy transporting officials in Bassa local government area (LGA), Plateau state, late on 19 April. No group immediately claimed responsibility for the attack.
- **Nigeria:** On April 20, local media reported that at least 12 people were killed while several others were reported missing and presumed kidnapped when unidentified bandits attacked at least seven villages in Illela local government area (LGA), Sokoto state.
- **Nigeria:** On April 20, local media reported that at least five people were killed in clashes between members of the Yoruba and Ilaje communities in Mkpanak, Ibeno local government area (LGA), Akwa Ibom state, on overnight on 19-20 April. Several properties were also destroyed in the melee.

866-340-8569

info@wwfocus.com

www.focuspointintl.com





- **Nigeria:** On April 22, local sources indicated that bandits killed 12 people, injured two and abducted a pastor during two attacks on a bar and on the Government Science and Technical College in Geidam, Yobe state, on 20 April. No ransom demand was immediately made.
- **Nigeria:** On April 22, local sources indicated that at least three people were killed in inter-communal clashes between Hausa gang members and local people in the Sabo area of Ede town, Ede North Local Government Area (LGA), Osun state. It was not immediately clear when the clashes took place.
- **Pakistan:** On April 18, local sources reported that several people were injured when security forces opened fire to disperse protesters demonstrating in front of a Frontier Corps (FC) camp in Chaghi, Balochistan province, during morning hours local time; the protesters were condemning alleged targeted killings by security forces.
- **Pakistan:** On April 19, authorities imposed a section 144 order, banning the gathering of five or more people, in Wana, Khyber Pakhtunkhwa province, through at least 25 April to prevent possible unrest, following violent clashes between demonstrators and security forces in the city on 17 April amid a protest to denounce the closure of the Wana Bazaar and Angoor Adda border crossing with Afghanistan. Internet was also suspended in the area.
- **Philippines:** On April 18, around 80 percent of Pilar village was covered with rocks and soil in Abuyog municipality, Leyte province, as of early morning hours local time due to a landslide triggered by ex-Tropical Storm (TS) Agaton on 10 April; authorities plan to designate the village as a “no man’s land” upon assessments by geologists. At least 48 residents were killed, 55 others missing and most others remained evacuated.
- **Philippines:** On April 21, updated sources indicated that at least 224 people died in parts of Eastern, Western and Central Visayas regions as well as Davao region as of morning hours local time, following the passage of ex-Tropical Depression (TD) Agaton. The worst-hit areas include Baybay, Abuyog, Motiong, Cebu City and Cateel; at least 147 people remained missing, while 109,518 others remained in evacuation shelters.
- **Russia:** On April 18, military authorities announced that flights will remain suspended at Rostov (ROV/URRP), Krasnodar (KRR/URKK), Anapa (AAQ/URKA), Gelendzhik (GDZ/URKG), Elista (ESL/URWI), Belgorod (EGO/UUOB), Lipetsk (LPK/UUOL), Bryansk (BZK/UUBP), Kursk (URS/UUOK), Voronezh (VOZ/UUOO) and Simferopol (SIP/UKFF) airports until at least 25 April, due to the Russian invasion of Ukraine.
- **Russia:** On April 19, Belgorod Governor Vyacheslav Gladkov claimed that at least one person was injured in Golovchino, Grayvoronsky district, Belgorod oblast, during morning hours local time due to a shelling attack from Ukraine. Further information was not immediately available.
- **Russia:** On April 21, local media reported that at least five people were killed and 25 others injured when a large blaze erupted at the 2nd Central Research Institute of the Ministry of Defence on Afanasy Nikitin Embankment in Tver during morning hours local time. Rescue operations were ongoing; the cause of the blaze was believed to be an electrical fault.

866-340-8569

info@wwfocus.com

www.focuspointintl.com





- **Somalia:** On April 18, initial reports indicated that mortar shells landed near the Parliament compound in Mogadishu during morning hours local time, shortly after members of the parliament passed the date for the election of the speaker. Further details were not immediately available.
- **South Sudan:** On April 19, Local reports indicated that at least 35 people, including a Médecins Sans Frontières (MSF) staff member, were killed or injured and thousands of others displaced by armed assailants in Adok, Pilleny, Thonyor and Touchria, Leer county of Unity state, on 4-10 April. Further details were not immediately available.
- **Ukraine:** On April 18, Ukrainian officials announced that Russian security forces planned to prohibit movement in and out of Mariupol in Donetsk oblast, from 18-25 April, in order to involve remaining Ukrainian men in the Russian military activity; movement between districts within the city will also be banned.
- **Ukraine:** On April 18, local sources indicated that armed clashes commenced in Kreminna, Sievierodonetsk raion, Luhansk oblast, during morning hours local time between Russian and Ukrainian security forces. Separately, at least two people were killed and four others were injured in Zolote, Popasna raion, while at least six policemen were injured in Lysychansk, Sievierodonetsk raion, due to shelling attacks.
- **Ukraine:** On April 18, local officials reported that at least six people were killed, eight others were injured, around 40 vehicles were damaged or destroyed, and a hotel was also damaged in Lviv, Lviv oblast, during morning hours local time, due to four Russian missile strikes. Emergency operations were ongoing.
- **Ukraine:** On April 20, local sources indicated that a Russian missile strike targetted a hospital in Bashtanka, Mykolaiv oblast overnight on 19-20 April, amid the ongoing Russian military activity in Ukraine; no casualties were reported.
- **Ukraine:** On April 19, local media reported that at least one person was killed after the vehicle they were travelling in hit a landmine planted by Russian forces in Stoyanka village, near Irpin, Kyiv oblast.
- **Ukraine:** On April 20, local sources reported that Russian artillery damaged multiple buildings in Zavodskiy district in Mykolaiv and Saltivka district in Kharkiv during late evening hours local time; casualty figures were not immediately available. Most regions of the country were also under an air raid warning.
- **Ukraine:** On April 21, Ukrainian officials announced that they found at least nine dead bodies of local residents in Borodianka, Kyiv oblast, as of late evening hours local time on 20 April, amid the ongoing Russian military activity in the country. No further details were immediately available.
- **Ukraine:** On April 21, president Volodymyr Zelensky extended an ongoing martial law due to the Russian invasion through at least 25 May. Martial law will reportedly allow authorities to impose curfews and restrict entry into and exit out of areas.

866-340-8569

info@wwfocus.com

www.focuspointintl.com





- **Ukraine:** On April 22, local sources indicated that at least eight civilians were injured on Khortytsia Island in Zaporizhzhia oblast, during early afternoon hours local time on 21 April, when a Russian missile strike targetted a residential building. No further details were immediately available.
- **Ukraine:** On April 22, authorities announced that evacuations of civilians are not planned today due to high risk along evacuation routes amid the ongoing Russian military activity. No further details were immediately available.
- **Venezuela:** On April 21, local reports indicated that several people were injured when police deployed tear gas in an attempt to disperse dozens of indigenous demonstrators in El Cruce, Jesús Marpia Semprún municipality of Zulia state, amid a multi-day protest roadblock on Machiques-Colón highway to demand new elections after the former mayor was imprisoned for drug trafficking.

Please be aware System Risk Management has asked all members to prohibit travel to extreme risk countries and regions. Please reference memorandum from the Chancellor regarding procedures relating to international travel to be followed by all System members found at this link:

<http://www.tamus.edu/assets/files/safety/pdf/InternationalTraveltoHighRiskCountries.pdf>

Should you have any questions, please contact me directly. Thank you.

Charles A. Longoria, CRM | Associate Director
System Risk Management

Clongoria@tamus.edu | 1262 TAMU | College Station, TX 77840-7896
Tel. 979.458.6237 | Cell 956.522.2881 | Fax 979.458.6247 | www.tamus.edu

866-340-8569

info@wwfocus.com

www.focuspointintl.com





COUNTRY TRAVEL ADVISORY LIST

Any travel to the below listed Extreme Risk countries or countries with an Extreme Risk region requires an International Travel Questionnaire submission to System Risk Management for review.



EXTREME RISK COUNTRIES

- | | |
|-----------------------------------|-----------------|
| 1) Afghanistan | 9) Russia |
| 2) Belarus | 10) Somalia |
| 3) Central African Republic (CAR) | 11) South Sudan |
| 4) Iran | 12) Sudan |
| 5) Iraq | 13) Syria |
| 6) Libya | 14) Ukraine |
| 7) Mali | 15) Venezuela |
| 8) North Korea | 16) Yemen |



HIGH RISK COUNTRIES

- | | |
|--------------------------------------------|------------------|
| 1) Algeria | 17) Haiti |
| 2) Azerbaijan | 18) Honduras |
| 3) Burkina Faso | 19) India |
| 4) Burma (Myanmar) | 20) Israel |
| 5) Burundi | 21) Kenya |
| 6) Cameroon | 22) Lebanon |
| 7) Chad | 23) Mauritania |
| 8) Colombia | 24) Mexico |
| 9) Congo (Republic of) | 25) Niger |
| 10) Cuba | 26) Nigeria |
| 11) Democratic Republic of the Congo (DRC) | 27) Pakistan |
| 12) Ecuador | 28) Panama |
| 13) Egypt | 29) Philippines |
| 14) Eritrea | 30) Saudi Arabia |
| 15) Ethiopia | 31) Tunisia |
| 16) Georgia | 32) Turkey |

866-340-8569

info@wwfocus.com

www.focuspointintl.com





COUNTRY TRAVEL ADVISORY DETAILS BY RISK LEVEL

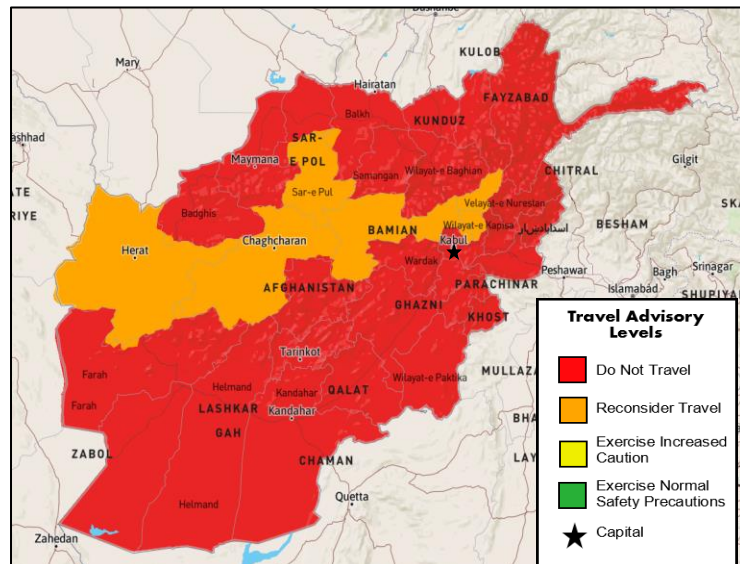


Afghanistan

Risk Level: **Extreme**

Country Overview:

It is advised to avoid traveling to Afghanistan. Travel is unsafe due to the unstable security situation involving armed conflict, terrorism, crime, and civil unrest. There is an extreme risk to personal safety and security because of widespread military operations, terrorism and insurgent attacks, and high levels of kidnappings, hostage-taking, suicide bombings, landmines, and vehicle-borne or other improvised explosive devices. Due to extensive warlordism and lawlessness, Afghanistan has long been beset by weak governance in many regions.



The Taliban launched a sweeping offensive against government forces resulting in the complete collapse of the Afghan Government. On August 15, 2021, the Taliban seized Kabul, marking complete control of all major cities in Afghanistan. The Taliban have solidified control of the country and have installed a Taliban government. The initial US-led invasion ousted the Taliban from power in 2001 following the September 11 attacks on U.S. soil. The U.S. negotiated a deal with the Taliban, which required the withdrawal of all foreign forces. The agreement brought an end to the two decades of occupation by the U.S. and other foreign countries, paving the way for the Taliban's advance. The Taliban were not defeated and gradually regained strength, carrying out numerous attacks on foreign and Afghan forces over the past 20 years. With the Taliban's control of the country virtually unopposed, they have been swift to reverse reforms and appear to be on a path of reinstating previously held policies.

The U.S. Embassy in Kabul suspended operations on August 31, 2021. While the U.S. government has withdrawn its personnel from Kabul, they continue to assist U.S. citizens and their families in Afghanistan from Doha, Qatar. It is advised to avoid traveling to Afghanistan due to the armed conflict.

866-340-8569

info@wwfocus.com

www.focuspointintl.com





Belarus

Risk Level: **Extreme**

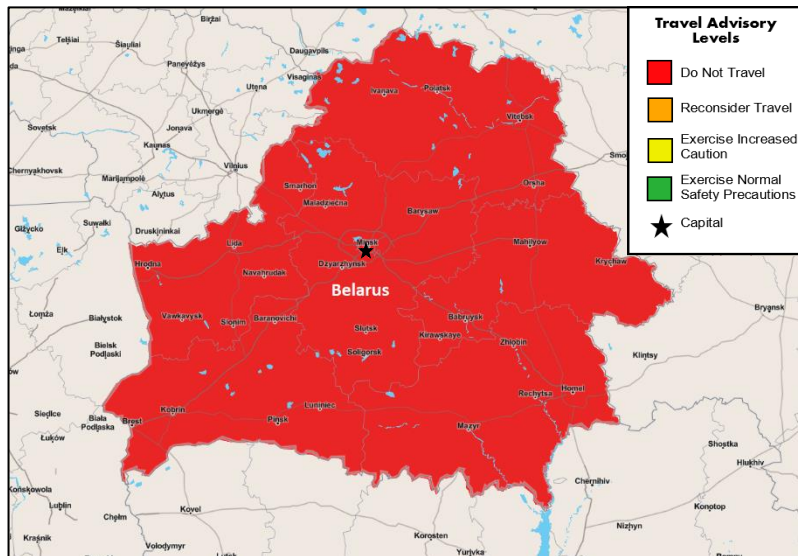
Country Overview:

The security situation in Belarus is extremely dangerous due to ongoing Russian military operations in Belarus and the Russian military operations in Ukraine. Travel to Belarus is not advised due to the risk of arbitrary enforcement of laws, detention, Russian military attack on Ukraine, Russian military operations, and high incidences of Covid-19.

The U.S Embassy in Belarus has closed, and all U.S. consular services have been suspended. All U.S. government employees have departed the country, and

it is advised to exit the country, exercise extreme caution and vigilance and avoid all public demonstrations. Belarusian authorities are known to detain individuals for suspicion of alleged affiliations with opposition parties or alleged participation in political demonstrations. The Belarusian Government has detained thousands of individuals in the past, and on May 23, 2001, Belarusian authorities targeted independent and foreign media. It forced a commercial aircraft transiting Belarusian airspace to stop and land to arrest an opposition journalist.

The Belarusian government is supporting Russia’s attack on Ukraine with Russian military operations taking place in Belarus. There is a heightened threat of conflict ensuing within Belarusian borders. The situation remains unpredictable and could escalate without warning. The following areas are considered exceptionally high risk due to Russian and Belarusian military being present as well as military equipment; Yelsk, Rechitsa, Luninets, Mazyr, Gomel, Bresk, Baranovich, and Asipovichy. Avoid all restricted areas and do not take photographs of any military activity or establishments as it is illegal. The situation is calm throughout the rest of the country and Minsk but could change quickly and without warning. Some border crossings into Poland have been closed to vehicles, and more movement restrictions can be implemented at short notice, especially in the border regions.



866-340-8569

info@wwfocus.com

www.focuspointintl.com





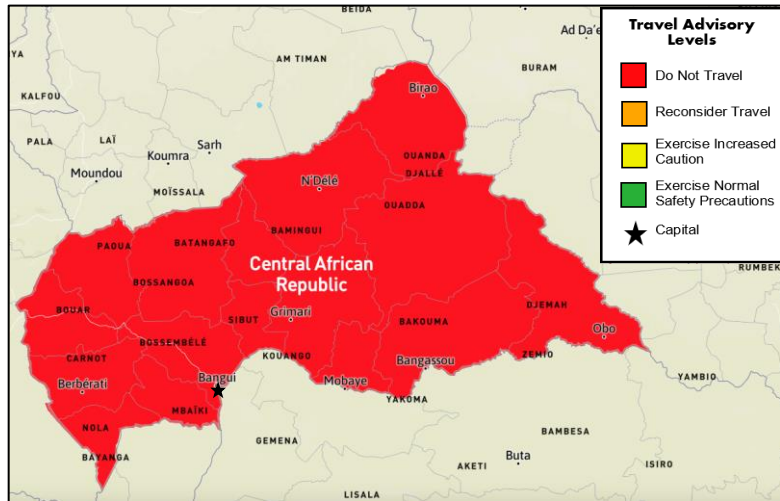
Central African Republic

Risk Level: **Extreme**

Country Overview:

The security situation in the Central African Republic (CAR) is dangerous. It is advised to avoid all travel to the CAR, if possible. Travel is unsafe due to civil unrest and crime. There is an extreme risk to personal safety and security because of sectarian violence by armed groups, in addition to everyday criminal activities, such as armed robbery, aggravated battery, and homicide.

The elections held in late 2020 and early 2021 were mired in violence and led to a six-month state of emergency, which has now expired. President Faustin Archange Touadéra was re-elected and formed a new government in June.



Although there have been no specific incidents of violence or threats explicitly targeting U.S. citizens, civil unrest, demonstrations, and post-election violence (including renewed outbreaks of armed conflict) continue to be a threat.

On November 30, 2021, at least 32 people were killed, including two regime soldiers, by suspected rebels in the Kaita and Bayengou villages, Ngaoundaye sub-prefecture, Ouham-Pendé prefecture. Further violence and unrest are likely in the near term. For essential travel to rural areas, avoid travel after dark and move only in convoy with a security escort. A national curfew is in place, which comes into effect at 10 pm and ends at 5 am. You should follow the government’s instructions and avoid traveling around Bangui during these hours.

Avoid all but essential travel to the Central African Republic. Have appropriate personal security measures in place if traveling to CAR is required.

866-340-8569

info@wwfocus.com

www.focuspointintl.com





Iran

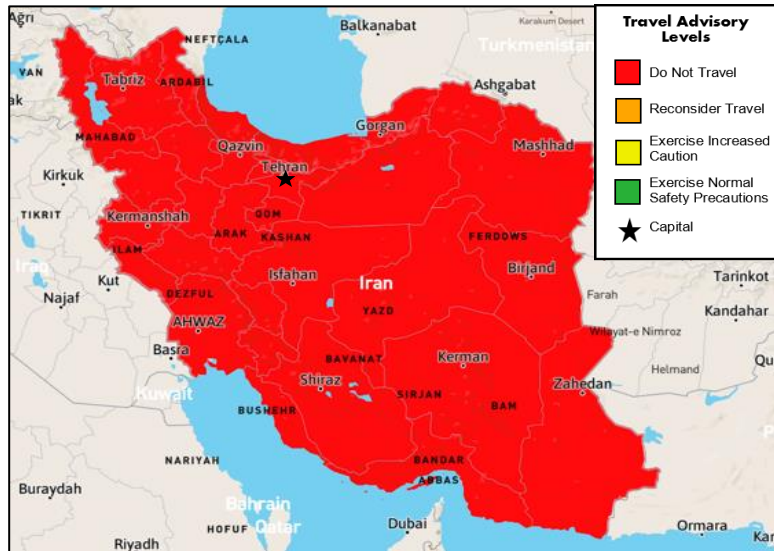
Risk Level: **Extreme**

Country Overview:

The security situation in Iran is extremely dangerous, with specific parts of the country being extremely unsafe. Travel to Iran is not advised due to the risk of arbitrary arrest and detention. Iran is also experiencing one of the highest incidences of COVID-19 in the Middle East. The risk of community transmission is high and extreme caution is advised. Iran has begun lifting its lockdown and resuming business activity.

U.S. citizens visiting or residing in Iran have been kidnapped, arrested, and detained on spurious charges. Iranian authorities continue to unjustly detain and imprison U.S. citizens, particularly dual national Iranian Americans, including students, journalists, business travelers, and academics--on charges including espionage and posing a threat to national security. Iranian authorities routinely delay consular access to detained U.S. citizens and consistently deny consular access to dual U.S.-Iranian citizens. The U.S. government does not have diplomatic or consular relations with the Islamic Republic of Iran. The U.S. government cannot provide emergency services to U.S. citizens in Iran.

It is advised that all visitors to Iran avoid travel to border areas surrounding Iraq, Afghanistan, and Pakistan, including Sistan and Baluchistan province and regions east of Bam in Kerman province, until further notice due to the risk of violent unrest and cross-border clashes. Visitors to eastern border regions are strongly advised to avoid loitering in the vicinity of military checkpoints, outposts, and personnel. For extended travel between cities, consider contracting a reputable local guide. Immediately report suspicious behavior and packages to local authorities. Be aware of traveling in convoy; the Iranian military regularly disguises troop movements by transporting them in unmarked vehicles, making convoys an attractive target for militants.



866-340-8569

info@wwfocus.com

www.focuspointintl.com



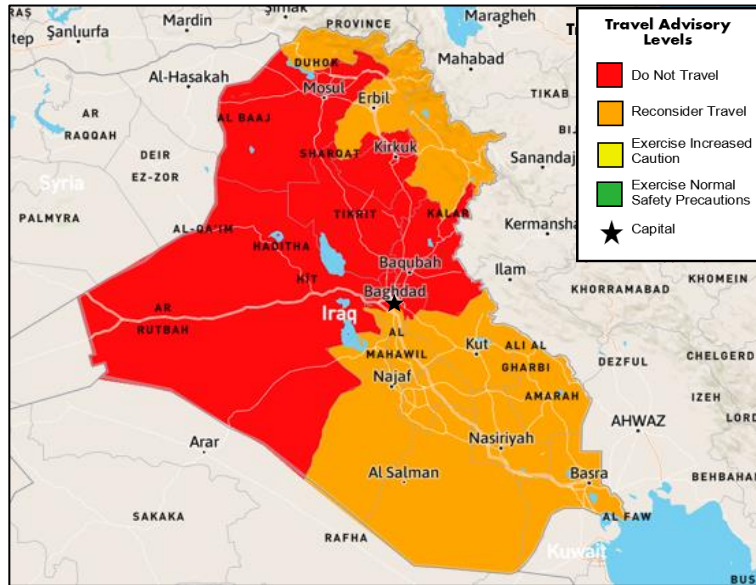


Iraq

Risk Level: **Extreme**

Country Overview:

The security situation in Iraq is extremely dangerous. It is advised to avoid travel to Iraq. Travel is unsafe due to terrorism, kidnapping, and armed conflict. There is also an extreme risk to personal safety and security because of active insurgent and terrorist groups, sectarian militias, and high levels of violence, including kidnappings, suicide bombings, and vehicle-borne or other improvised explosive devices (IEDs).



Iraq remains subject to regional tensions. Militia groups opposed to the western presence in Iraq continue to threaten Western interests in Iraq, including through attacks on Global Coalition military bases, diplomatic premises, and foreign nationals.

The Global Coalition’s announcement that it will transition to a non-combat role by 31 December 2021 may heighten tensions around this date.

On December 31, 2019, the Embassy suspended public consular services until further notice due to damage done by Iranian-backed terrorist attacks on the Embassy compound. U.S. Consulate General in Erbil remains open and continues to provide consular assistance. In mid-October 2018, the Department of State ordered the suspension of operations at the U.S. Consulate General in Basrah. That institution remains closed. Due to security concerns, U.S. Embassy personnel in Baghdad have been instructed not to use Baghdad International Airport.

Avoid areas near the Turkish, Syrian, and Iranian borders. There are continuous military operations against insurgent groups in the regions bordering Iraq and armed conflict at the Syrian border. U.S. citizens should not travel through Iraq to Syria to engage in armed conflict. They would face extreme personal risks (kidnapping, injury, or death) and legal risks (arrest, fines, and expulsion). The Kurdistan Regional Government stated that it would impose prison sentences of up to ten years on individuals who illegally cross the border. Additionally, fighting on behalf of, or supporting designated terrorist organizations, is a crime that can result in penalties, including prison time and hefty fines in the United States.

It is advised to avoid all travel to Iraq.

866-340-8569

info@wwfocus.com

www.focuspointintl.com



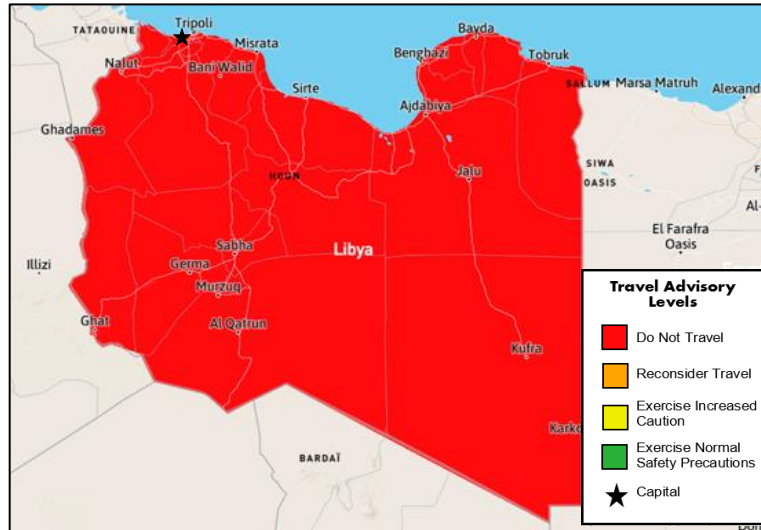


Libya

Risk Level: **Extreme**

Country Overview:

The security situation in Libya is extremely dangerous. It is advised to avoid travel to Libya. Travel is unsafe due to armed conflict, terrorism, civil unrest, and crime. There is an extreme risk to personal safety and security because of high levels of terrorist activity and corruption, including kidnapping for ransom, suicide bombings, and the use of vehicle-borne or other improvised explosive devices (IEDs). Terrorist groups continue plotting attacks in Libya. Violent extremist activity in Libya remains high, and extremist groups have made threats against U.S.



government officials and citizens. Terrorists may attack with little or no warning, targeting tourist locations, hotels, transportation hubs, markets/shopping malls, and government facilities.

The 2021 Libyan presidential election was held, with the first round on December 24, 2021, and the second round on January 24, 2022. These were, however, postponed. Elections had previously been planned for early 2019 but were delayed due to Khalifa Haftar's Western Libya campaign, after having earlier been scheduled for December 10, 2018. Election periods are often marred by unrest. On December 15, 2021, three different militia groups blocked buildings of the Libyan National Unity Government, including the Ministry of Defence, in Tripoli to denounce the upcoming elections. Clashes were also reported between the groups, resulting in power blackouts in parts of the city. Heightened security in the affected area is expected in the near term.

Outbreaks of violence between competing armed groups can occur with little warning and potentially impact U.S. citizens. The capital, Tripoli, and other cities, such as Surman, Al-Jufra, Misrata, Ajdabiya, Benghazi, Sabha, and Derna, have witnessed fighting among armed groups and terrorist attacks. Hotels and airports frequented by Westerners have been the targets of these attacks. Even demonstrations intended to be peaceful can turn confrontational and escalate into violence. Militia or armed groups sometimes detain travelers for arbitrary reasons, do not grant detainees access to a lawyer or a legal process, and do not allow detainees to inform others of their status. U.S. citizens should carry proof of citizenship and valid immigration status at all times, but having these documents does not guarantee fair treatment.

Some international and national airports are closed, and flights out of operational airports are sporadic and canceled without warning.

The U.S. government cannot provide emergency or routine assistance to U.S. citizens in Libya, as the U.S. Embassy in Tripoli suspended its operations in July 2014

866-340-8569

info@wwfocus.com

www.focuspointintl.com





Mali

Risk Level: **Extreme**

Country Overview:

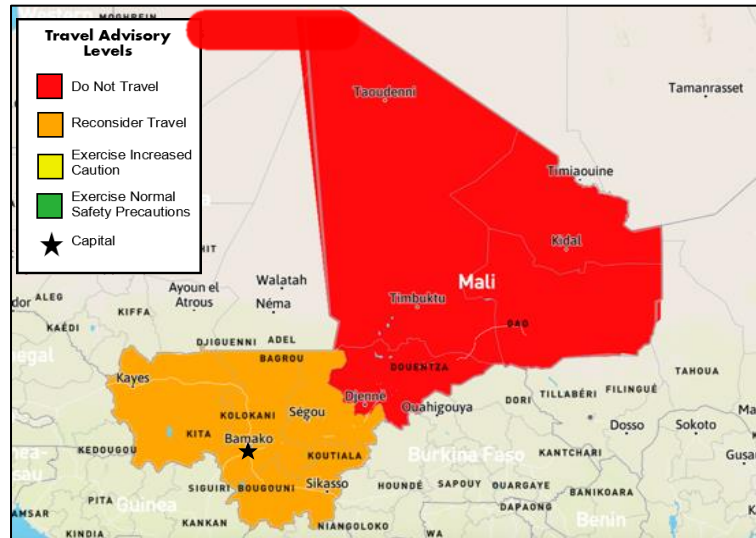
The security situation in Mali is extremely dangerous. It is advised to avoid travel to Mali, if possible. Travel is unsafe due to political instability, crime, and terrorism. There is an extreme risk to personal safety and security because of terrorist activity and violent crimes such as kidnapping and armed robbery.

In Mali, violent crime is common such as kidnapping and armed robbery. Violent crime is prevalent during seasonal events and local holidays, especially in Mali's southern regions and Bamako suburbs. It is not uncommon to see random police checkpoints and roadblocks at night throughout the country. Armed groups and terrorists continually plague Mali with kidnappings and attacks with little or no warning. They often target nightclubs, restaurants, places of worship, hotels, Western diplomatic missions, and other locations that foreigners frequently visit.

Malian state presence, including law enforcement, schools, and other public services, generally does not exist in those areas outside of major cities. The country's northern parts continue to be plagued by insecurity due to terrorism and ongoing military operations. At the same time, central Mali, in the Segou and Mopti Regions, is unstable due to violent intercommunal conflict instigated by terrorist groups and armed attacks. In Mali's Central and Northern territories, the U.S. government cannot provide any emergency services to U.S. citizens due to U.S. government employees being restricted from traveling to the regions due to security concerns.

On 9 January, the Economic Community of West African States (ECOWAS) announced the closure of land and air borders between ECOWAS countries and Mali and the suspension of all non-essential commercial transactions between ECOWAS countries and Mali. ECOWAS announced the reimposition of sanctions and travel restrictions against Mali after President Goïta did not commit to new elections in February. Flights from Bamako to countries outside the West African region continue, but you should check with your airline before traveling.

Anti-government unrest is expected to continue, arising out over a host of issues. These include national strikes by police and teachers' unions, arrests of anti-corruption activists, allegations of voter fraud in the March legislative elections, inter-communal clashes in northern and central regions, and the economic impact of the COVID-19 pandemic.



866-340-8569

info@wwfocus.com

www.focuspointintl.com





North Korea

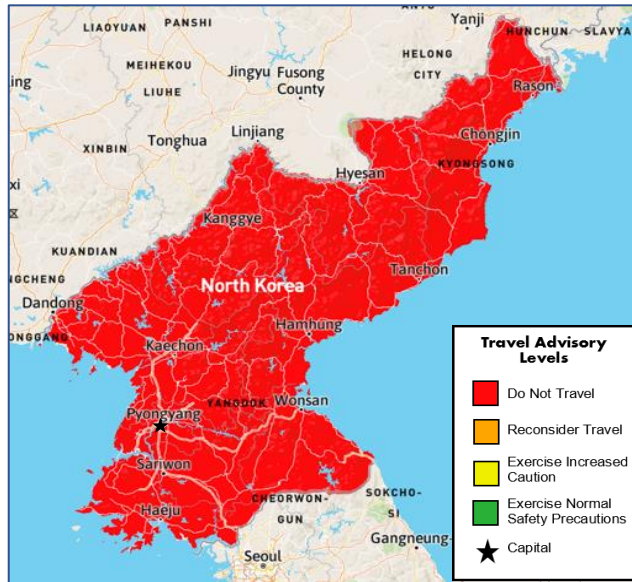
Risk Level: **Extreme**

Country Overview:

The security situation remains volatile on the Korean peninsula, and North Korea's political tensions can change with little notice and no warning and propose an extreme risk to visitors.

Travel is unsafe due to the severe risk of arrest and long-term detention. In addition, U.S. passports are not valid for travel to, in, or through North Korea without a specific validation from the U.S. Department of State. Special validations are granted only in limited circumstances.

North Korea was one of the first countries to close its borders to the world at the outset of the COVID-19 pandemic resulting in the country experiencing extreme economic decline.



The U.N. estimates that the country is suffering severe food shortages.

The U.S. government is unable to provide emergency services to U.S. citizens in North Korea as it does not have diplomatic or consular relations with North Korea. Sweden serves as the protecting power for the United States in North Korea, providing limited emergency services. The North Korean government routinely delays or denies Swedish officials' access to detained U.S. citizens.

866-340-8569

info@wwfocus.com

www.focuspointintl.com





Russia

Risk Level: **Extreme**

Country Overview:

In some parts of Russia, the security situation is highly dangerous, with specific areas extremely unsafe. It is advised to exercise increased caution in Russia due to terrorism, harassment, and the arbitrary enforcement of local laws. There is an overall moderate risk to personal safety and security throughout the rest of the country due to terrorist groups continuing to plot attacks.



It is advised to avoid all travel to parts of the North Caucasus region (including the Mount Elbrus area), such as Chechnya, Dagestan, Ingushetia, North Ossetia, and the southeast part of Stavropol bordering Chechnya, Kabardino-Balkaria, and Karachay-Cherkessia; and within 10km of the border with the Ukrainian Donetsk and Lugansk Oblasts. It is further advised to limit all but essential travel to the Ukrainian Kharkiv Oblast within 20km of the border.

Do not travel to Crimea as the international community, including the United States and Ukraine, does not recognize Russia's purported annexation. There are continuing abuses against foreigners and the local population by the occupation authorities in Crimea, particularly against those who challenge their influence on the peninsula. Russia enforces special restrictions on dual U.S.-Russian nationals. It may refuse to acknowledge dual U.S.-Russia nationals' U.S. citizenship, including denying U.S. consular assistance to detained dual citizens and preventing their departure from Russia. Due to the Russian government-imposed reduction on U.S. diplomatic personnel, the U.S. government may have delays in providing services to U.S. citizens, especially in the Saint Petersburg area.

Russia launched a full-scale attack on Ukraine on February 24, 2022, which is still ongoing. As a result, western nations have placed severe economic sanctions against Moscow with far-reaching effects on those in the country, including flight cancellations and suspension of Mastercard and Visa payment systems. Cards issued in Russia may continue to work in the country but are restricted outside of Russia. If you are in Russia, you may not fly directly to most European countries due to restrictions placed on Russian carriers and airspace. Connecting flights via Turkey and the Middle East are still operational, and travel arrangements should be made soon as this could quickly change.

Russia has begun easing the restrictions to combat the spread of COVID-19. Russia has restricted entry to most foreign nationals except for medical specialists and members of diplomatic missions.

866-340-8569

info@wwfocus.com

www.focuspointintl.com



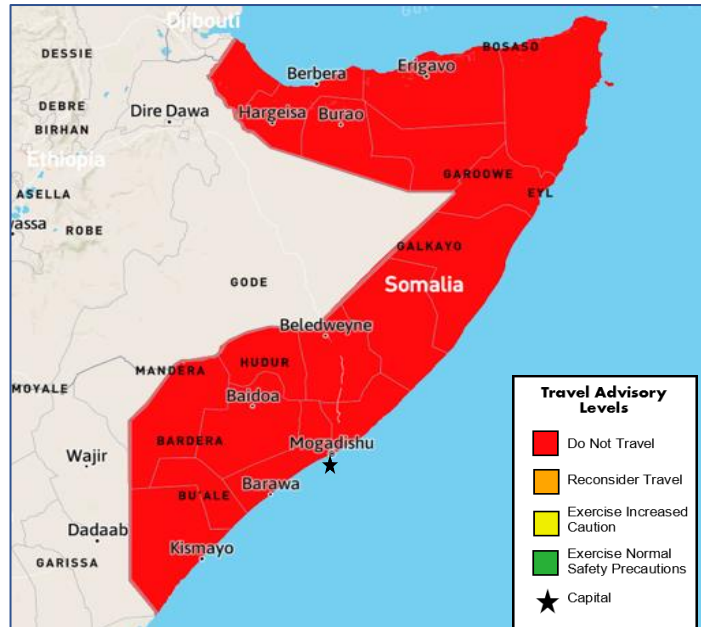


Somalia
Risk Level: **Extreme**

Country Overview:

The security situation in Somalia is extremely dangerous. Travel is unsafe due to crime, terrorism, and piracy. There is an extreme risk to personal safety and security because of terrorist activity and violent crime, such as kidnapping and murder, which are common throughout the country.

Al-Shabaab has lost control of a large portion of their southern and central Somalia territory due to the success of the Africa Union Mission in Somalia (AMISOM)-led Operation Indian Ocean offensive. Coupled with the regular cross-border fighting, Somalia has multiple violent risks that can endanger travelers and residents alike. There is a current outbreak of polio that has the potential to impact travelers. Medical facilities across Somalia have limited capacity and are often non-existent in rural areas.



Deadly attacks by Al-Shabaab continue. On November 25, 2021, at least eight people were killed and 17 injured, including schoolchildren, in a car bombing in Somalia's capital. Al-Shabaab claimed that the bomb intended to strike a United Nations security convoy passing near a school in Mogadishu. The extremist group demonstrated its capacity to undertake mortar attacks throughout the country, with incidents recorded in Middle Shabelle, Gedo, and Bari regions in September 2021. The group also continued to impose blockades on urban centers in the Bakool region, notably Huddur and Wajid, causing food shortages. Meanwhile, clashes on September 30 broke out between Ahlu Sunna Waljama'a (ASWJ) militia and Galmudug state forces in the Bohol area (Galgaduud region).

Violent crime, such as kidnapping and murder, is common throughout Somalia, including Puntland and Somaliland. Illegal roadblocks are also widespread. Several schools acting as "cultural rehabilitation" facilities operate throughout Somalia with unknown licensing and oversight. Reports of physical abuse and people being held against their will in these facilities are common.

Terrorists continue to plot kidnappings, bombings, and other attacks in Somalia. They may conduct attacks with little or no warning, targeting airports and seaports, government buildings, hotels, restaurants, shopping areas, and other areas where large crowds gather and Westerners frequent, as well as Government, military, and Western convoys. Among others, attack methods can include car bombs, suicide bombers, individual attackers, and mortar fire.

The U.S. government has minimal ability to provide emergency services to U.S. citizens in Somalia due to the lack of permanent consular presence.

866-340-8569

info@wwfocus.com

www.focuspointintl.com





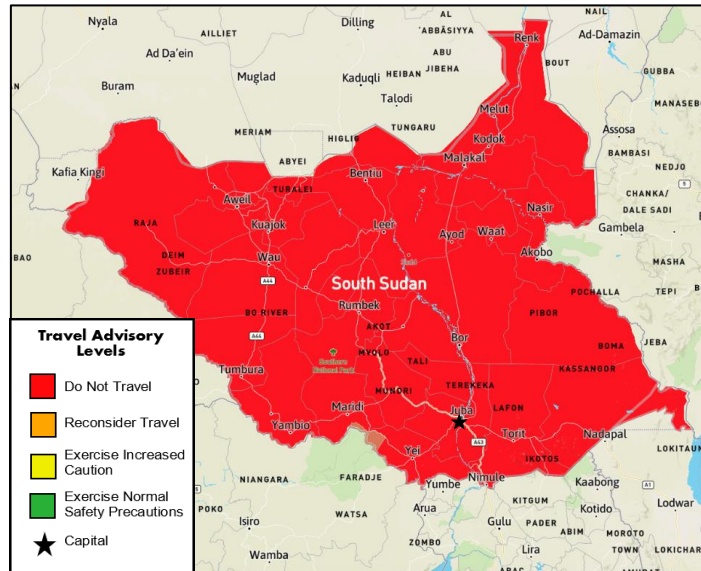
South Sudan

Risk Level: **Extreme**

Country Overview:

The security situation in South Sudan is extremely dangerous. Travel is unsafe due to crime and armed conflict. There is an extreme risk to personal safety and security because of armed clashes, border disputes, ethnic violence, and crime, including carjacking, shootings, ambushes, assaults, robberies, and kidnappings. Travelers to South Sudan should ensure that they have comprehensive contingency plans that do not depend on support from the Embassy.

Foreign nationals have been the victims of rape, sexual assault, armed robberies, and other violent crimes. Armed conflict is ongoing throughout the country and includes fighting between various political and ethnic groups, and weapons are readily available to the population. Journalist work is also very hazardous and illegal without the proper documentation.



South Sudanese authorities have announced the reopening of land borders, lifting of stay-at-home orders, travel restrictions, and other emergency conditions that had been implemented due to COVID-19.

It is advised to avoid all travel to South Sudan.

866-340-8569

info@wwfocus.com

www.focuspointintl.com





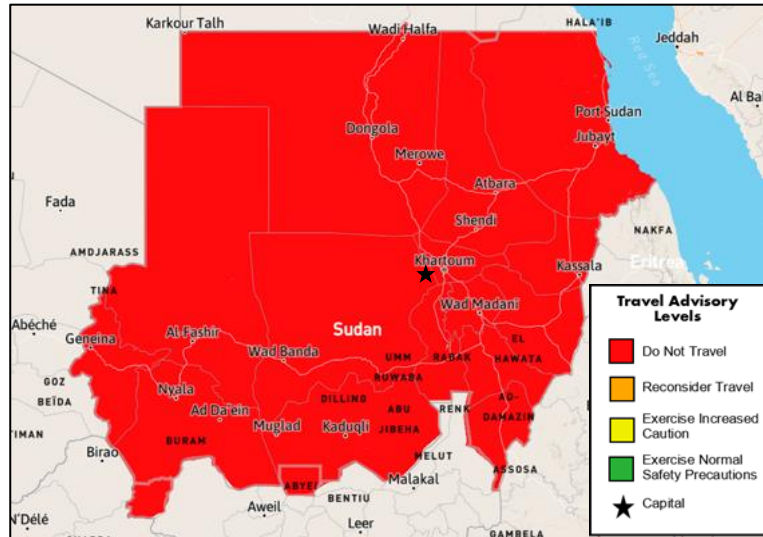
Sudan

Risk Level: **Extreme**

Country Overview:

The security situation in Sudan is extremely dangerous. Travel is unsafe due to crime, terrorism, kidnapping, and armed conflict. Armed conflict and criminal activity are mainly present in contested regions, although kidnappings, armed robberies, and carjacking occur in all parts of the country.

There has since been increased military activity in the capital city of Khartoum and nearby Omdurman, with bridges linking the two cities across the River Nile being closed off. Sudan's journey to democratic rule has been fragile since the April 2019 military ouster of the long-time ruler Omar al-Bashir, after months of intense protests. A power-sharing agreement was then established to form a government involving the military, civilian representatives, and protest groups.



On November 21, the military announced the return of Prime Minister Abdalla Hamdok to head a transitional government; however, the ongoing political crisis forced the resignation of the Prime Minister on 2 January 2022. Since then, protests have intensified across the whole nation. The telephone and internet services continue to be unreliable and have often been blocked at short notice in the past. There is a heightened risk of deterioration of the situation in Khartoum and elsewhere in Sudan.

Crime can occur, such as kidnapping, armed robbery, home invasion, and carjacking. This type of crime is more frequent outside of Khartoum. Members of known terrorist groups and individuals sympathetic to these groups in Sudan could attack with little or no warning, targeting foreign and local government facilities and areas frequented by Westerners. Demonstrations can occur with no warning. The most recent protests in Khartoum have been peaceful. However, police and other security forces may intervene to disperse demonstrators, including tear gas, when protests occur near key governmental locations and impair freedom of movement.

Violence continues along the border between Chad and Sudan and in areas near the border with South Sudan (including the disputed Abyei area). Armed opposition groups are active in Central Darfur state. Intercommunal clashes can occur throughout the country and result in the declaration of localized States of Emergency. The U.S. government has limited ability to provide emergency services to U.S. citizens outside of Khartoum. U.S. government employees must obtain special authorization from the Sudanese Government to travel outside Khartoum.

It is advised to avoid all travel to Sudan.

866-340-8569

info@wwfocus.com

www.focuspointintl.com



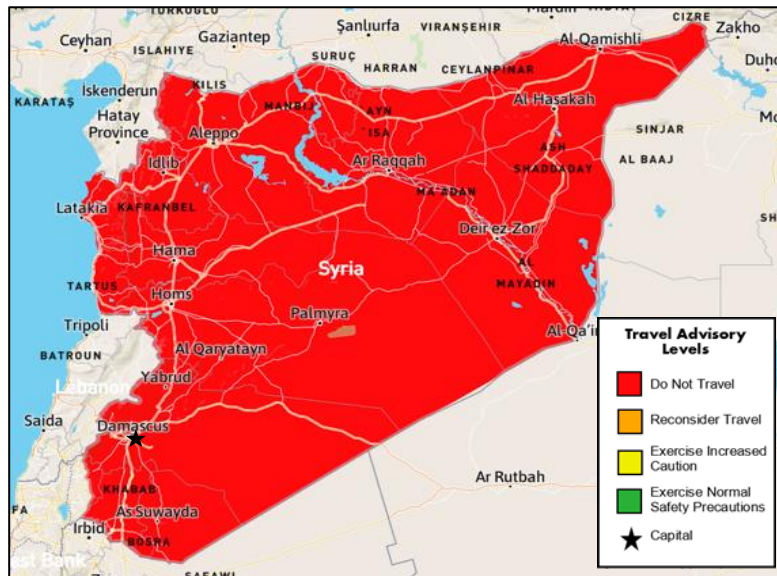


Syria

Risk Level: **Extreme**

Country Overview:

In Syria, the security situation is exceptionally dangerous. It is advised to avoid travel to Syria. Travel is unsafe due to armed conflict, terrorism, and civil unrest. There is an extreme risk to personal safety and security because no part of Syria is considered safe from violence. Widespread military operations involving chemical warfare, shelling, and aerial bombardment have significantly raised the risk of death or severe injury.



The Syrian regime has quelled anti-government protests with deadly force, and Syria is also engaged in a full-scale civil war.

The Government no longer controls vast swathes of the country, particularly in northern, southern, and eastern Syria and the Damascus suburbs. Some armed groups have utilized car bombs, improvised explosive device/indirect-fire attacks, sniper fire, and carried out kidnappings throughout the country. Violence is widespread throughout the country, and no area of Syria is exempt from violence.

In 2012 the U.S. Embassy, located in Damascus, suspended its operations. Currently, the Czech Republic provides the protecting power for the United States in Syria. Consular services that the Czech Republic provides to U.S. citizens are extremely limited (to include accepting applications for U.S. passports and U.S. Consular Reports of Birth Abroad, as well as providing notarial services), and the U.S. government is unable to provide any emergency services to U.S. citizens in Syria, U.S. citizens who seek consular services should try to leave the country and contact a U.S. embassy or consulate in a neighboring country quickly and safely.

Long-standing conflict with neighboring states and porous borders has contributed to a complex and unpredictable security environment. There is a continuous risk of kidnapping and detentions of U.S. citizens and Westerners throughout the country. U.S. citizens remain a target, with many abductions having occurred since mid-2012 and as recently as early 2019. U.S. citizens are targets of arbitrary abduction and detention by the Syrian Government and do not have access to medical attention or due process while in detention. The Government detention centers are known to be unsanitary facilities where inhumane, cruel, and degrading treatment of detainees have been documented, as well as torture and extrajudicial killings. Several international commercial flights from and to Damascus International Airport are now operational. It is, however, advised to avoid all travel to Syria.

866-340-8569

info@wwfocus.com

www.focuspointintl.com





Country Risk Summaries Cont.



Ukraine
Risk Level: **Extreme**

Country Overview:

The security situation in eastern Ukraine is dangerous, with some areas considered highly unsafe. Due to Russia's invasion, there is a heightened risk to personal safety and security throughout Ukraine.



On February 24, 2022, Russia launched a full-scale invasion of Ukraine with ground and air

attacks on major Ukrainian cities, including its capital, Kyiv. Russia's military moved into Ukraine from Crimea, Donetsk, and Luhansk territories and across the Russian Northern border and neighboring northern country Belarus. Preliminary attacks focused on Kyiv, Kharkiv, Odesa, Mariupol, with Russia reaching the capital within 24 hours. In recent months Negotiations between both parties have been ongoing, with no resolution emanating from the talks.

Ukrainian president Volodymyr Zelenskyy has stated that he will remain in Kyiv at his government residence while thousands of Ukrainians have fled to the neighboring countries, which has led to highways being brought to a standstill. Neighboring countries Poland, Moldova, Romania, and Hungary have opened their borders to refugees.

Occupation authorities reportedly abused and arbitrarily imprisoned both foreigners and some of the local population. They mainly target individuals who are seen as opposing Russia's occupation of the peninsula. It is advised to avoid all travel to Ukraine due to the military activity in the country. There is a real risk to life, and it is recommended to immediately leave the country if you deem it is safe to do so. Ukrainian airspace is closed, and most evacuations from the country are via its western borders into neighboring countries.

Crime targeting foreigners and property is common. There are regular demonstrations in Ukraine, including Kyiv, that have often turned violent. There has also been the occurrence of politically targeted assassinations and bombings. There are reports of violent attacks on minority groups and police by radical groups. As the Russian attacks on Ukraine continue, several countries, including the U.S., have withdrawn their Embassy staff from Ukraine. The U.S. government prohibits its employees from traveling to Crimea and cannot provide emergency services to U.S. citizens in Crimea. U. S. citizens in Ukraine have been advised to depart immediately via commercial or private means.

The U.S. Embassy in Kyiv has suspended routine American Citizen services until further notice in response to a sharp increase of COVID-19 cases in Ukraine. However, the Government of Ukraine has announced the gradual easing of specific COVID-19 quarantine measures under an "adaptive quarantine" plan, according to which services and institutions will reopen in stages.

866-340-8569

info@wwfocus.com

www.focuspointintl.com





Venezuela
Risk Level: **Extreme**

Country Overview:

The security situation in Venezuela is extremely dangerous. Travel is unsafe due to ongoing political instability, crime, poor health infrastructure, and arbitrary arrest and detention of foreign nationals. Political marches and demonstrations, which occasionally become violent, are frequent in all areas, and crimes like homicide, armed robbery, kidnapping, drug trafficking, and carjacking are common.

Demonstrations typically elicit a strong police and security force response that includes tear gas, pepper spray, water cannons, and rubber bullets against participants and occasionally devolve into looting and vandalism. The United Nations Human Rights Council's Fact-Finding Mission reported that the regime has engaged in thousands of extrajudicial killings.

In addition, some of Venezuela's land and sea borders are subject to closure. U.S. citizens residing or traveling in Venezuela are advised to depart the country. Consular access to detained U.S. citizens is severely restricted, and the U.S. government is highly unlikely to be granted access. Security forces have arbitrarily detained U.S. citizens for long periods. Venezuelan authorities may not notify the U.S. government of the detention of a U.S. citizen.

Since March 11, 2019, the U.S. Department of State suspended all operations at the U.S. Embassy in Caracas and has withdrawn all diplomatic personnel from Venezuela. The U.S. has additionally suspended all nonstop flights between Venezuela and the U.S. until further notice. Around 150,000 troops, tanks, missile launchers, and aircraft were deployed on the Colombian border amid renewed tensions between Bogota and Caracas.

There are shortages of food, electricity, water, medicine, and medical supplies throughout much of Venezuela, and it is advised to avoid all non-essential travel.



866-340-8569

info@wwfocus.com

www.focuspointintl.com



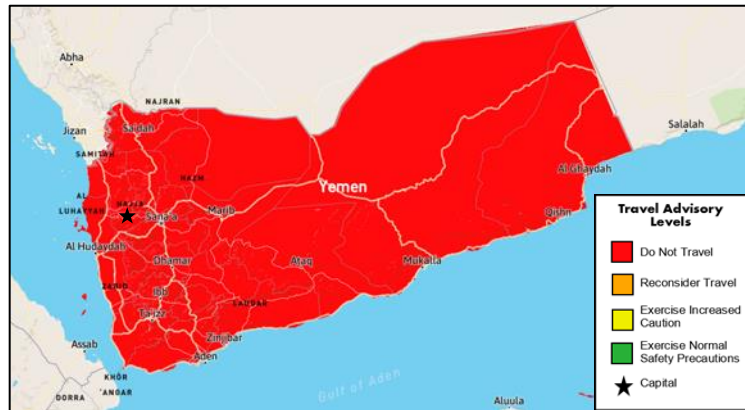


Yemen

Risk Level: **Extreme**

Country Overview:

The security situation in Yemen is extremely dangerous. Travel is unsafe due to armed conflict, terrorism, and civil unrest. There is an extreme risk to health and personal safety because of ongoing military conflict, heightened terrorist activity, kidnappings for ransom, and unlawful detentions by rebel groups. Employees of western organizations may be targeted for attack or abduction. Military conflict has caused significant destruction of infrastructure, housing, medical facilities, schools, and power and water utilities. This limits the availability of electricity, clean water, and medical care.



The U.S. Embassy in Sana'a suspended its operations in February 2015, and the U.S. government is unable to provide emergency services to U.S. citizens. Cholera is also present throughout Yemen, and the provision of adequate medical supplies is either extremely limited or unavailable.

There is a very high risk of kidnapping, and detention of U.S. citizens in Yemen, particularly dual national Yemeni Americans. Rebel groups in Sana'a have detained U.S. citizens, including dual Yemeni American citizens. U.S. citizens, including dual nationals, have faced difficulty departing Yemen, including lengthy delays.

It is advised to avoid all travel to Yemen.

866-340-8569

info@wwfocus.com

www.focuspointintl.com





HIGH RISK COUNTRIES

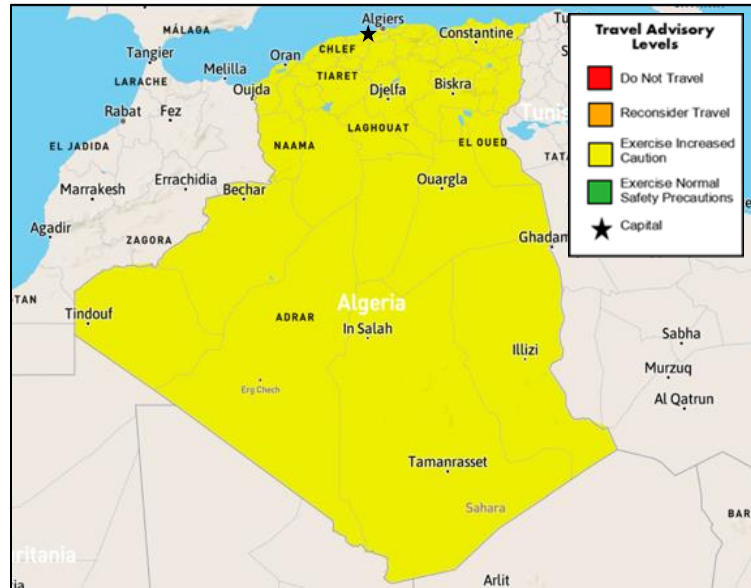


Algeria

Risk Level: **Moderate Risk**

Country Overview:

In some parts of Algeria, the security situation is highly dangerous, with specific areas being extremely unsafe. It is advised to exercise increased caution in Algeria due to terrorism. There is an overall moderate level of risk to personal safety and security because terrorists are likely to carry out attacks, including kidnappings, and civil disturbances sometimes occur throughout the country. Since February 2019, mass protests have taken place across Algeria in demand of immediate political reform. On June 2, 2019, Algeria's Constitutional Council announced the cancelation of presidential elections scheduled for July 4. Travelers should avoid political gatherings and demonstrations and follow local advice.



Avoid traveling to rural areas within 50 km (31 miles) of the border with Tunisia and within 250 km (155 miles) of Libya, Niger, Mali, and Mauritania due to terrorism and criminal activities, including kidnapping.

The Algerian Government has started to cut back on the restrictions in place to limit the spread of COVID-19 by allowing public transportation in cities to resume and by allowing more businesses to reopen.

The gradual easing of restrictive measures will be dependent on the evolution of COVID-19 cases in Algeria. There is a limited commercial flight schedule and a high demand for flights. Many airlines show flights as bookable but continue to get canceled shortly before scheduled departures. It is advised to contact airlines directly when making a booking and receive confirmation that the schedule will be running. Masks are required in public spaces.

866-340-8569

info@wwfocus.com

www.focuspointintl.com





Azerbaijan

Risk Level: **Moderate Risk**

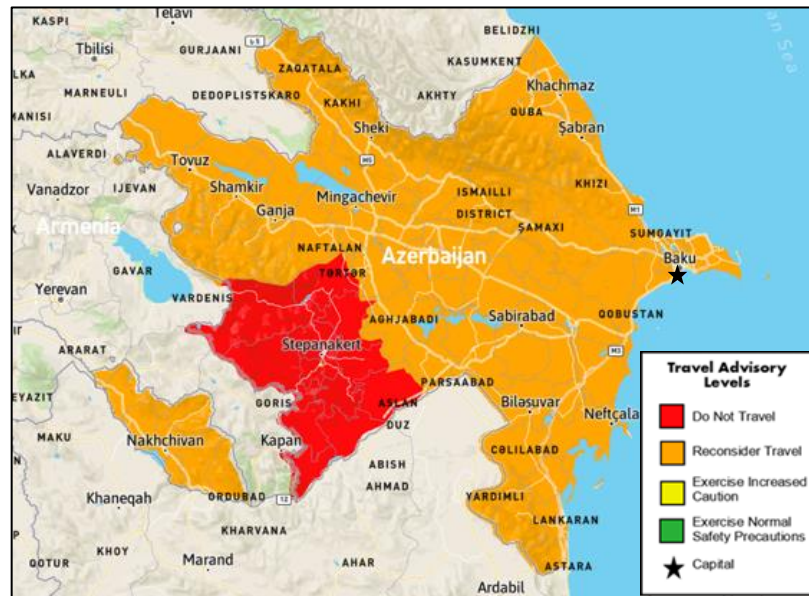
Country Overview:

The security situation in some parts of Azerbaijan is highly dangerous, with specific areas being extremely unsafe. It is advised to exercise increased caution in Azerbaijan due to terrorism and armed conflict risk. There is a moderate threat to personal safety and security because terrorist groups continue to plot attacks as casualty incidences occur in the Nagorno-Karabakh conflict with Armenia.

Azerbaijan and Armenia have seen the worst fighting in decades over the Nagorno-Karabakh disputed territory, with reports of over 1,000 civilian casualties. On November 9, 2020, a peace deal was signed by Russia, Armenia, and Azerbaijan, after six weeks of fighting between Azerbaijan and ethnic Armenians. Effective from November 10, the peace deal aims to resolve the dispute but is being seen as a win for Azerbaijan. The region is recognized internationally as Azerbaijani but has been governed by ethnic Armenians since 1994. Approximately 100,000 people have been displaced in Nagorno-Karabakh since the conflict re-erupted on September 27, 2020. Clashes between Azerbaijani and Armenian forces infrequently occur over the disputed region; however, with international assistance, the two countries reinstated the ceasefire relatively quickly after a flare-up.

The occasional use of artillery systems, including land mines and mortars, and intermittent gunfire, have resulted in casualties continuing to occur each year in the Nagorno-Karabakh conflict. Roads near the 'line of contact' and the international border between Armenia and Azerbaijan are to be avoided. Some areas still contain unexploded ordinances (UXO), including the towns and rayons of Ganja, Tartar, Barda, Beylagan, and Aghjabadi. Efforts to remove these UXO are currently underway, and it is advised not to touch or approach any UXO but rather to warn Azerbaijani authorities immediately. The U.S. government employees are restricted from traveling to Azerbaijan, rendering it unable to provide emergency services to U.S. citizens in Nagorno-Karabakh.

Travelers are advised to avoid all travel to Nagorno-Karabakh and its surrounding regions.



866-340-8569

info@wwfocus.com

www.focuspointintl.com



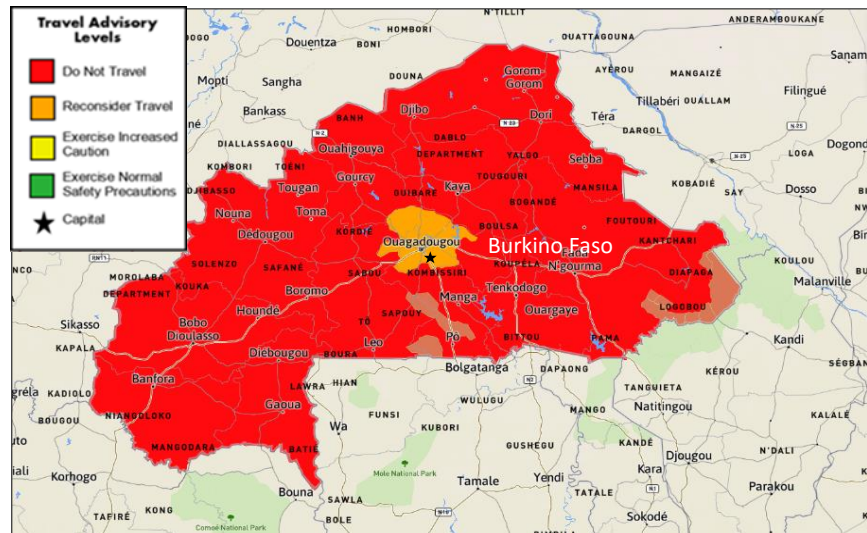
Burkina Faso

Risk Level: **High Risk**

Country Overview:

The security situation in Burkina Faso is highly dangerous, with some parts of the country being extremely unsafe. It is advised to reconsider travel to Burkina Faso due to terrorism and crime. There is a high level of risk to personal safety and security because of terrorist activity and common violent crimes.

On January 24, 2022, the military announced that it had seized the country's power by suspending the National Assembly and constitution and detaining the President and other high-ranking government officials. This follows heavy gunfire near military garrisons in Ouagadougou on January 23 and demonstrations in major cities in the previous days. The coup comes after violent unrest in the capital on 22 January 2022 and several waves of anti-government protests in the latter part of 2021, denouncing government inaction over continued violence against both civilians and security services in the country's restive north by militants with ties to Islamic State and al Qaeda. Kaboré's election was tainted by violence in the north, which prevented much of the northern population from voting in the November 2020 elections.



The newly appointed transitional government will continue to face the problems that hampered Kabore's government, such as widespread insecurity and the prospect of sanctions following international condemnation of the coup. The African Union (AU) and Economic Community of West African States (ECOWAS) condemned the coup, and sanctions similar to those imposed on Mali and Guinea may now be imposed on Burkina Faso.

Air borders were suspended, and while they have re-opened, only a small number of flights are operating. Land borders were closed for private journeys and only open for humanitarian vehicles, necessary goods, and equipment destined for the defense and security forces. A nationwide curfew was introduced between 9 pm and 5 am. The curfew has since been removed, but a ban on festive events and public celebrations taking place after midnight on Monday to Thursday and after 2 am on Friday to Sunday has been implemented.

It is advised not to travel to the following parts of the country: all areas of the country north of Boulssa town; within 80km of the western border with Mali; Sahel and Est Regions; and Koulpélogo Province in the Centre-Est Region. It is also advised to limit all but essential travel to the rest of Burkina Faso, including the capital Ouagadougou. All travel to Karpala, Balkiui, and Rayongo (also known as Dayongo) neighborhoods of Ouagadougou's Arrondissement 11 are restricted due to the potential for security operations.

866-340-8569

info@wwfocus.com

www.focuspointintl.com





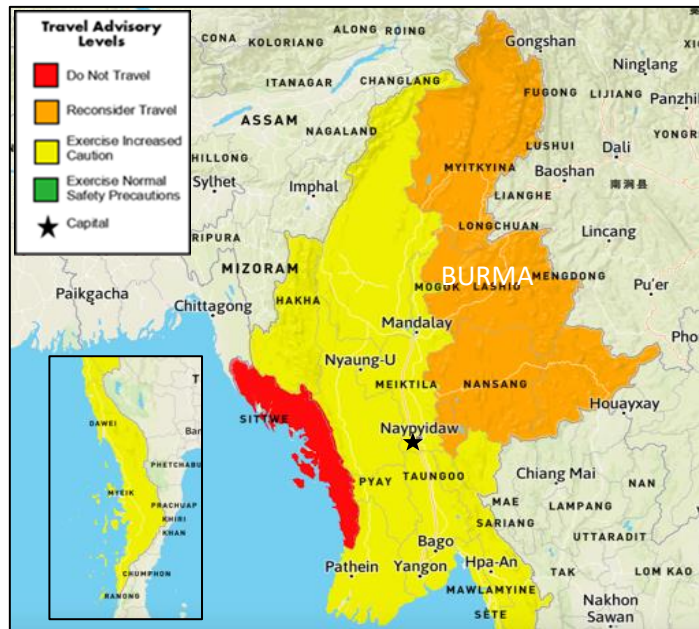
Burma (Myanmar)

Risk Level: **Moderate Risk**

Country Overview:

The security situation in some parts of Myanmar is highly dangerous, with specific areas of the country being extremely unsafe. Due to civil unrest and armed conflict, it is advised to exercise increased caution in Myanmar. There is an overall moderate risk to personal safety and security because of fighting between the Myanmar military and various ethnic armed groups and militia forces.

It is advised to avoid all travel to Rakhine State due to civil unrest and armed conflict. Travel to townships in Chin State, Kayin State, Kachin State, and Shan State is not advised due to civil unrest and armed conflict. Travelers should avoid areas bordering China, Laos, Thailand, Bangladesh, and India.



On February 1, 2021, the former State Counsellor of Myanmar Aung San Suu Kyi was detained by the Myanmar military along with other senior figures from the ruling party over unsubstantiated claims of election fraud. Since the coup, pro and anti-military rallies have been held in Yangon and Mandalay daily and often escalate into violence, with security forces regularly firing live ammunition at protestors. Hundreds of protestors have been killed, including children, resulting in widespread international condemnation. On August 1, 2021, Senior General Min Aung Hlaing declared himself Prime Minister, and August 2023 was the provisional date for new elections and an end to the state of emergency.

On December 6, 2021, Aung San Suu Kyi was found guilty and sentenced to 2 years in prison, and she awaits further charges and trials that will likely see her never leave prison.

Attacks against security forces and regime-affiliated personnel, businesses, and facilities cannot be ruled out. Protests could take place and could turn violent at any time. Security forces could use excessive and lethal force to retaliate and disperse crowds.

Travelers are advised to avoid all protests.

866-340-8569

info@wwfocus.com

www.focuspointintl.com





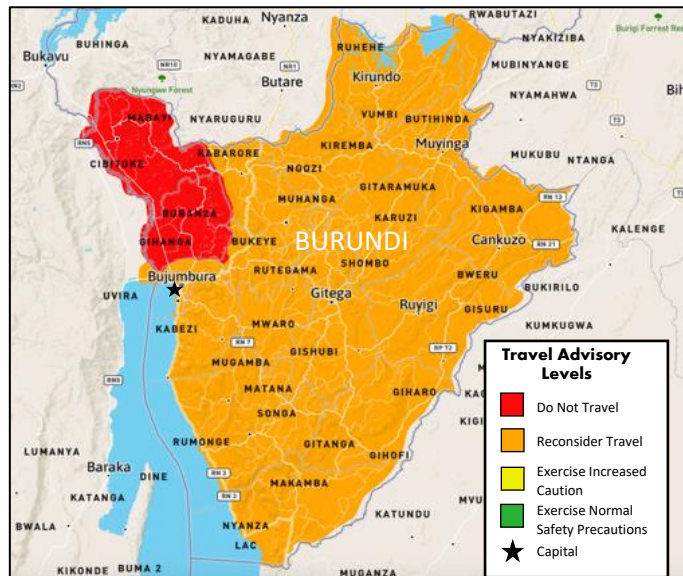
Burundi

Risk Level: **High Risk**

Country Overview:

The security situation in Burundi is highly dangerous, with some regions of the country being extremely unsafe. It is advised to reconsider travel to Burundi. There is a high risk to personal safety and security because of ongoing political tensions, sporadic violence, clashes by armed groups, and serious crimes, such as armed robbery.

It is advised to avoid all travel to Cibitoke and Bubanza provinces; areas of Bujumbura Rural province west of the Rusizi river towards the Democratic Republic of the Congo border, except for the Rusizi Delta Nature Reserve; Ruvubu National Park; the road north of Bujumbura airport towards Cibitoke; and the main road running west from Kayanza through the Kibira National Park. It is also advised to limit all but essential travel to the rest of Burundi (excluding airside transit through Bujumbura International Airport).



Within Burundi, the medical services are not on par with U.S. standards, and adequate trauma services are non-existent. Fire and Emergency medical services are limited or do not exist in some parts of Burundi. The CDC has issued a Level 1 Travel Notice on Malaria. Sporadic violence throughout the country is expected due to ongoing political tensions in Burundi. Freedom of movement can be hindered due to military and police checkpoints that are common in the country. In the past, weapon searches in the residence of private citizens have been conducted by police.

In Burundi, the U.S. government has limited ability to provide emergency services to U.S. citizens. As a consequence of travel restrictions on U.S. Embassy personnel, the U.S. government is not able to provide emergency services to U.S. citizens in the following areas of Burundi: the provinces of Bubanza and Cibitoke, Kibira National Park (including the park's southernmost part in Muramvya province), and Ruvubu and Buriri Forest.

866-340-8569

info@wwfocus.com

www.focuspointintl.com





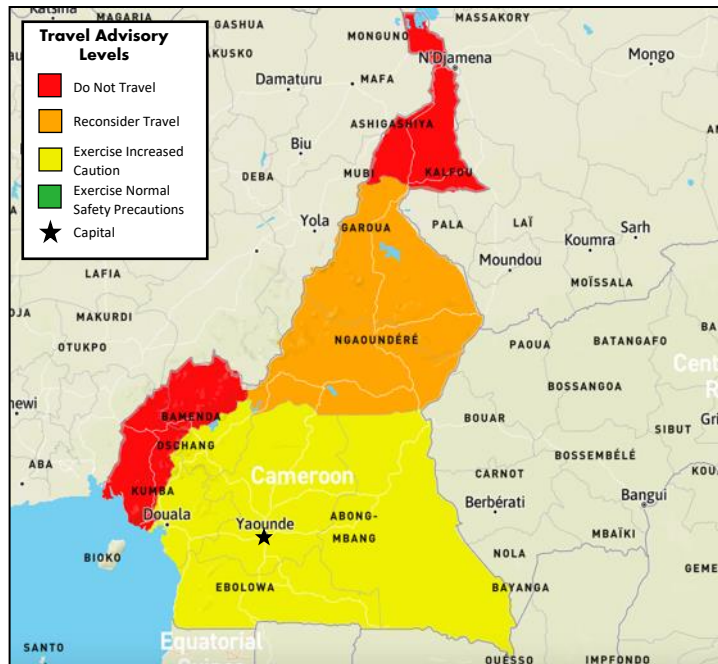
Cameroon

Risk Level: **Moderate Risk**

Country Overview:

The security situation in certain parts of Cameroon is extremely dangerous. It is advised to exercise increased caution in Cameroon due to crime, civil unrest, and terrorism. There is an overall moderate risk to personal safety and security because of terrorist activity in Northern and Eastern Cameroon and violent crime, such as kidnapping, armed robbery, assault, and common carjacking.

Armed separatists announced extended general strikes in Northwest and South-West regions in 2019. There have also been multiple clashes between security forces and armed groups over the past year in many places in Northwest and South-West regions, including in the towns of Bafut, Tubah, Ndu, Widikum, and in Lebialem division, the Gughe village, DongaMantung division, the Kikaikelaki village (Kumbo commune), Bui division, Bamessing village (Ndop commune), Ngoketunjia division. Travelers should be vigilant, keep a low profile, and monitor local media.



The Southern Cameroons Defence Forces (SOCADEF) announced a two-week ceasefire effective from March 29 amid the ongoing COVID-19 outbreak. The Ambazonia Defence Forces (ADF) militia was also not immediately expected to join the ceasefire in the Anglophone Southwest and Northwest regions. Limit outdoor exposure and exercise caution in the Anglophone Southwest and Northwest regions. Tensions remain high, and further unrest is likely.

It is advised to avoid travel to Far North Region; within 40km of the border with Nigeria, except Garoua in North Region; within 40km of the border with Chad; within 40km of the border with the Central African Republic (CAR); the Bakassi Peninsula; Northwest Region; and Southwest Region (including the towns of Buea, Muyuka, and Tiko in Fako Division), except Limbe in Fako Division. It is further advised to limit all but essential travel to Limbe in the Fako Division of Southwest Region and the rest of North and Adamawa Regions, including Garoua in North Region.

Due to current official travel restrictions, the U.S. government has limited ability to provide emergency services to U.S. citizens in the North, Far North, Northwest, Southwest, and Parts of Adamawa and East Regions of Cameroon.

866-340-8569

info@wwfocus.com

www.focuspointintl.com





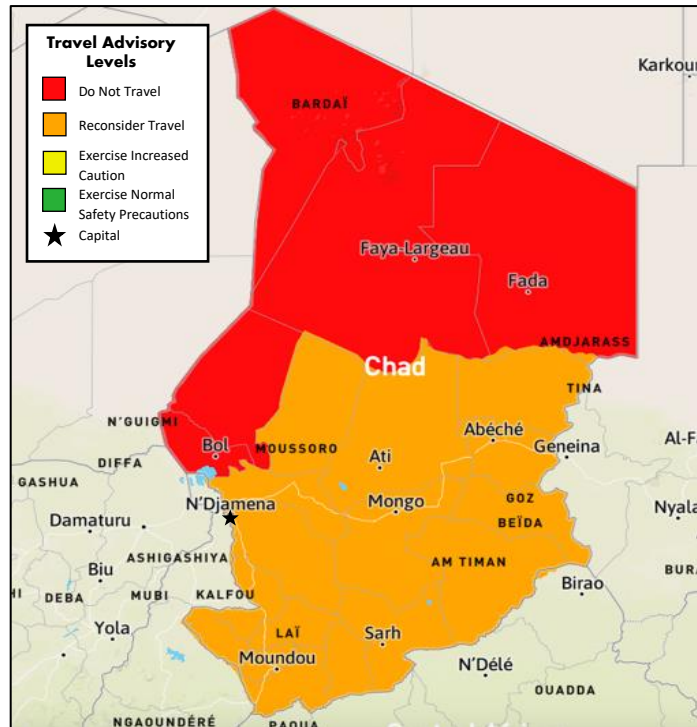
Chad

Risk Level: **High Risk**

Country Overview:

The security situation in Chad is highly dangerous, with some parts of the country being extremely unsafe. It is advised to reconsider travel to Chad due to crime, terrorism, and the existence of minefields. There is a high level of risk to personal safety and security because of widespread violent crimes, such as armed robbery and mugging, as well as terrorist attacks and minefields along the borders with Libya and Sudan.

It is advised not to travel at all to the following areas in Chad: areas within 30km of all borders, except for the capital N'Djamena (where it is advised to limit all but essential travel); within 30km of Lake Chad and the parts of Kanem and Lac regions to the west of the towns of Mao and Bol; the regions of Ennedi, and Tibesti; and the region of Borkou, except within 30km of the town of Faya Largeau (where it is advised to limit all but essential travel). It is further advised to limit all but essential travel to the remaining parts of the country, including the capital, N'Djamena, and the town of Faya Largeau.



The President of Chad Idriss Deby Itno was killed in battle while fighting rebels en route to N'Djamena, Chad's capital city. The military has taken control of the country in the interim, announcing that the late President's son, General Mahamat Idriss Deby Itno, would serve as interim head of state. Parliament and the Government have been dissolved and replaced by a transitional military council. The interim Government will operate for 18 months. All borders were closed, and a curfew was implemented as unrest was expected. The President's death comes just after he was declared the winner in the recent contested elections, which would have seen him head the state for the next six years.

The U.S. Government has extremely limited ability to provide emergency services to U.S. citizens in Chad as U.S. Government employees must obtain special authorization to travel outside of the capital, including the Lake Chad Basin.

866-340-8569

info@wwfocus.com

www.focuspointintl.com



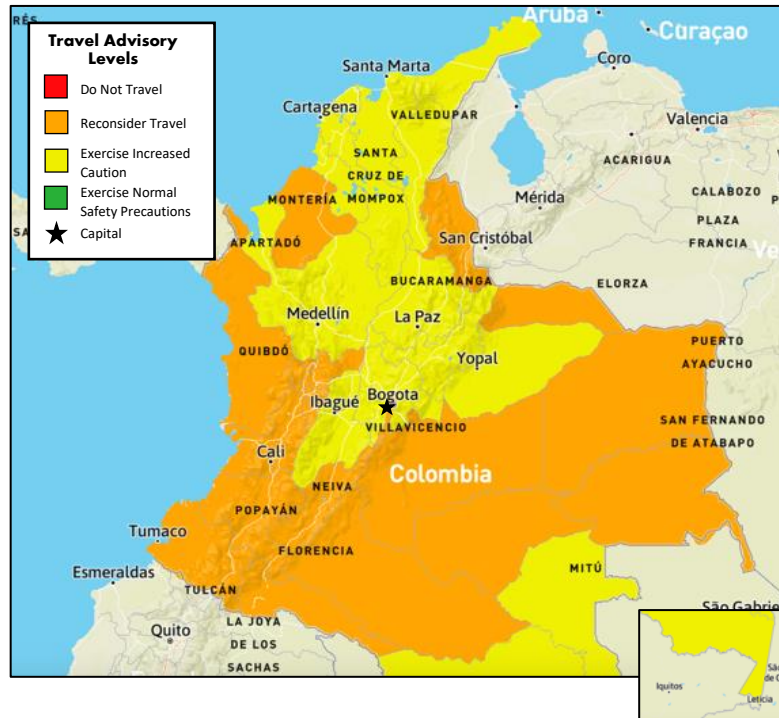


Colombia

Risk Level: **Moderate Risk**

Country Overview:

In some parts of Colombia, the security situation is highly dangerous, with specific areas being extremely unsafe. It is advised to exercise increased caution in Colombia due to crime and terrorism. There is an overall moderate risk to personal safety and security because the National Liberation Army (ELN) continues to plot possible attacks, and violent and organized criminal activities, such as homicide, assault, armed robbery, extortion, and kidnaping, are common. On April 26, 2019, Colombia's Transandino oil pipeline was bombed in western Narino province, marking the seventh attack in recent times. Travelers should be vigilant and pay close attention to warnings issued by the Colombian authorities.



There has been a recent uptick in large-scale protests in recent months, which have often turned violent. Several people have been killed during these demonstrations, and it is advised to avoid them and monitor local media for the latest updates.

It is advised to avoid all travel to areas within 20km of the Venezuela and Ecuador border, except the Pan American Highway crossing at Ipiales. It is also advised to limit all but essential travel to the departments of Antioquia (except Medellín); Arauca; Caquetá; Cauca (except Popayan); Chocó (except its capital Quibdó and the whale-watching towns of Nuquí, Bania, Solano, and Capurganá); Guainía; Guaviare; Meta (except Villavicencio and the tourist site of Caño Cristales); Nariño (except Pasto and the border crossing of Ipiales); Norte de Santander; Putumayo; Valle de Cauca (except Cali); and Vichada.

The U.S. government has limited ability to provide emergency services to U.S. citizens as U.S. government personnel cannot travel to these areas because of security restrictions and limited domestic travel options.

866-340-8569

info@wwfocus.com

www.focuspointintl.com





Congo (Republic of)

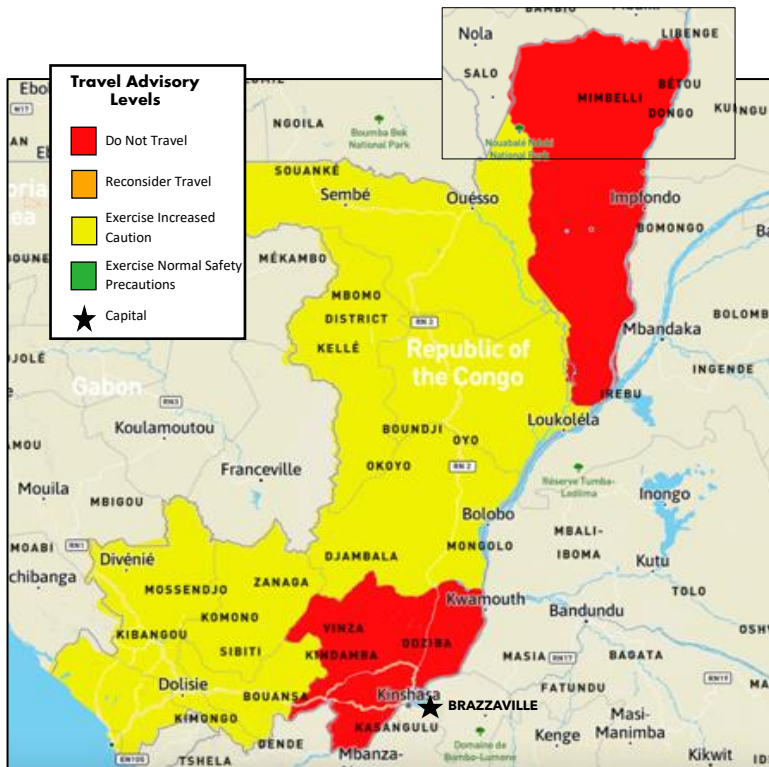
Risk Level: **Moderate Risk**

Country Overview:

The security situation in specific parts of the Republic of the Congo is extremely dangerous. It is advised to exercise increased caution while in the country due to crime and civil unrest. There is an overall moderate risk to personal safety and security because violent crime, such as armed robbery and assault, is common. In addition, political demonstrations and armed clashes can be unpredictable.

It is advised to avoid all travel to the southern and western districts of the Pool region, including the Boko, Kindamba, Kinkala, Mayama, and Mindouli districts; the Mouyondzi district of Bouenza region; and within 50km of the border with the Central African Republic in Likouala region. It is further advised to limit all but essential travel to the Brazzaville region, except for the city of Brazzaville and the Ngabe district of the Pool region.

The U.S. government has limited ability to provide emergency services to U.S. citizens outside Brazzaville.





Cuba

Risk Level: **Moderate Risk**

Country Overview:

The security situation in Cuba is relatively stable and characterized by a strong military and police presence. American citizens should exercise increased caution due to health attacks targeting numerous U.S. Embassy employees. The personal safety and security of other travelers in Cuba may also be at risk. While there is no recent history of terrorism in Cuba, attacks cannot be ruled out.



On July 11, 2021, thousands of people took to the streets in Cuba to peacefully protest over the economy, shortages of medicines, the response to COVID-19, and harsh restrictions on freedom of expression and assembly. The protests evolved into thousands of people calling for an end to the 62-year-old communist regime in the country. They started in the western city of San Antonio de Los Baños and later spread to more than 40 cities and towns, including the capital Havana. State security forces responded heavy-handedly, resulting in over 100 arrests, internet service disruption, and the destruction of property. Hundreds of Cubans lined up outside police stations to look for missing relatives whose whereabouts were unknown.

Travelers to Cuba may experience border closures, airport closures, travel prohibitions, stay-at-home orders, business closures, and other emergency conditions within Cuba due to COVID-19. It is advised to avoid Hotel Nacional and Hotel Capri in Havana. If you experience any unusual acute auditory or sensory phenomena, immediately move to another area.

Raul Castro has retired and stepped down as the first secretary of the Communist Party of Cuba, transferring power to President Miguel Diaz-Canel. In the short term, little change is expected as Diaz-Canel is a staunch ally and supporter of the Castro family. The U.S. has declared Cuba a state sponsor of terrorism and has imposed sanctions over human rights violations.

866-340-8569

info@wwfocus.com

www.focuspointintl.com





Democratic Republic of the Congo (DRC)

Risk Level: **High Risk**

Country Overview:

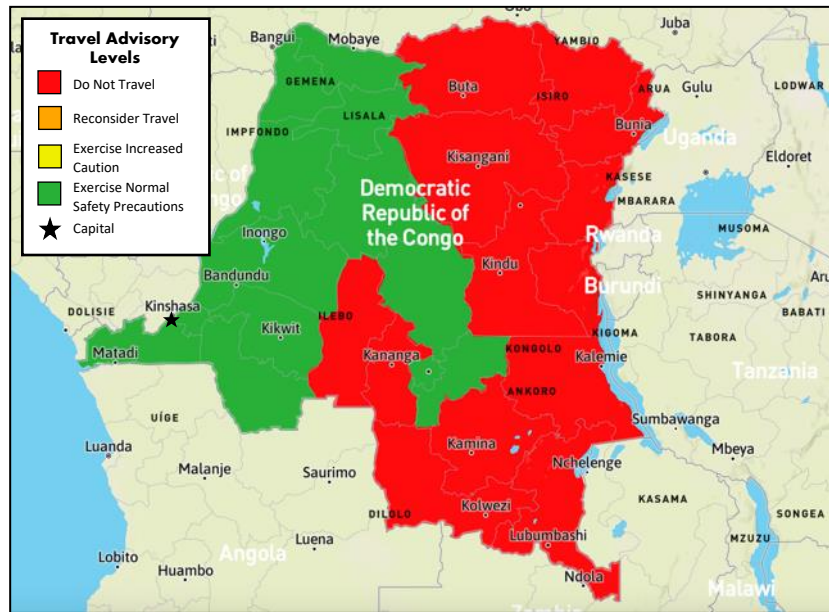
In some areas of the Democratic Republic of the Congo (DRC), the security situation is highly dangerous, with extremely unsafe specific parts of the country. It is advised to reconsider travel to the DRC due to civil unrest and crime. It is recommended to reconsider travel to the DRC due to civil unrest and crime.

There is a high level of risk to personal safety and security because of the activities of rebels and other armed groups, potential civil unrest, and outbreaks of violence, including killing, rape,

kidnapping, and pillaging. Avoid overland travel in rural areas in eastern Congo. Contract a private security escort with local experience for business-critical travel.

The Ebola outbreak was declared over on 16 December 2021. The outbreak began in North Kivu (Nord-Kivu) province, originating in Béni territory on July 17, 2019. There have been no new cases since 30 October. The World Health Organization had declared the outbreak to be a Public Health Emergency of International Concern (PHEIC). The WHO officials reported that the Ebola virus resulted in over 180,000 suspected cases with nearly 3600 deaths, mostly children under five.

It is advised to avoid all travel to the provinces of Kasai, Kasai Central, Kasai Oriental, Sud-Kivu, Nord-Kivu, Ituri, Maniema, Tanganyika, Bas-Uélé, and Haut-Uélé as there have been sporadic and severe outbreaks of violence targeting civilians, including killing, rape, kidnapping, and pillaging. It is further advised to limit all but essential travel to the rest of the country.



866-340-8569

info@wwfocus.com

www.focuspointintl.com



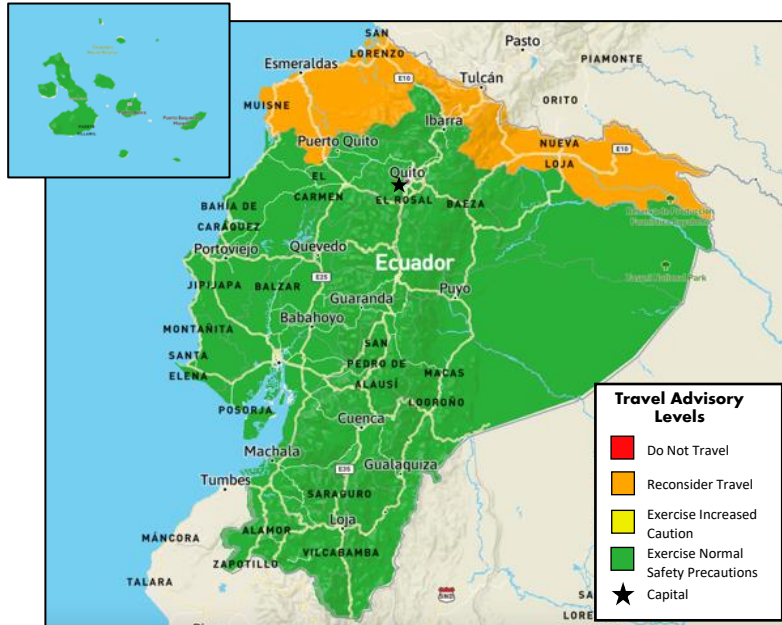


Ecuador

Risk Level: **Moderate Risk**

Country Overview:

In some parts of Ecuador, the security situation is highly dangerous, with specific areas being extremely unsafe. Travelers are advised to exercise increased caution due to crime and terrorism. There is a heightened level of risk to personal safety and security in the northern border area with Colombia because it has a higher rate of crime, including kidnapping for ransom than the rest of the country. Serious, sometimes violent, demonstrations and road blockades occur throughout Ecuador with little to no warning.



Reports indicate a recent increase in violent crime in Guayaquil, including multiple targeted assassinations and attempted assassinations against port employees. There has been a recent increase in violent crime in the southern region of Guayaquil as well. Any official personnel traveling to the port should take additional security.

The Ecuadorian Government announced the State of Exception on October 22 in response to an uptick in cartel and gang violence that resulted in three large prison riots that left 223 people dead since early February 2021. There is an increased risk of gang violence, and social unrest as the Government battles a growing gang presence coupled with protests over worsening economic conditions.

Crime, particularly violent crime, is a concern throughout Ecuador. Limited police and judicial resources contribute to Ecuador's overall high crime rate. Pickpocketing, purse snatching, robbery, and theft of travel documents are the crimes most committed against U.S. citizens. It is advised to avoid all travel within 20km of the border with Colombia, except for the official border crossing town of Tulcan in Carchi province. It is further recommended to limit all but essential travel to Sucumbios and Esmeraldas provinces.

Transnational crime groups operating in Esmeralda's province have engaged in violent crime and killed local citizens in addition to carrying out bombings targeting the Ecuadorian military and law enforcement. The U.S. government is limited in its ability to provide emergency services to U.S. citizens in the Colombian border area, as U.S. government personnel cannot travel to the provinces of Esmeraldas, Carchi, and Sucumbíos without permission from the Embassy's security office. However, U.S. government personnel are permitted to travel to the northern bank of the Napo River in Sucumbíos, an area approximately four miles wide, and the portion of Esmeraldas province that is south of Esmeraldas city.

866-340-8569

info@wwfocus.com

www.focuspointintl.com





Egypt

Risk Level: **Moderate Risk**

Country Overview:

In some parts of Egypt, the security situation is highly dangerous, with specific country areas being extremely unsafe. Travelers to Egypt should exercise increased caution due to terrorism. There is an overall moderate risk to personal safety and security due to several extremist organizations operating in Egypt. It is advised to avoid traveling to the Governorate of North Sinai because of the significant increase in criminal activity and continued terrorist attacks on police and security forces.



It is also advised to limit all but essential travel to the Governorate of South Sinai, except for the area within the Sharm el-Sheikh perimeter barrier, which includes the airport and the areas of Sharm el Maya, Hadaba, Naama Bay, Sharks Bay, and Nabq (although travel by air to or from Sharm el-Sheikh is not recommended); and the area west of the Nile Valley and Nile Delta regions, excluding the coastal areas between the Nile Delta and Marsa Matruh.

Local law prohibits protesting or demonstrating without a permit. Being near anti-government protests can draw scrutiny from Egyptian police and security forces. U.S. citizens have been detained for participating in demonstrations and posting content on social media perceived as critical of Egypt or its allies.

Local law prohibits protesting or demonstrating without a permit. Being near anti-government protests can draw scrutiny from Egyptian police and security forces. U.S. citizens have been detained for participating in demonstrations and posting content on social media perceived as critical of Egypt or its allies.

866-340-8569

info@wwfocus.com

www.focuspointintl.com



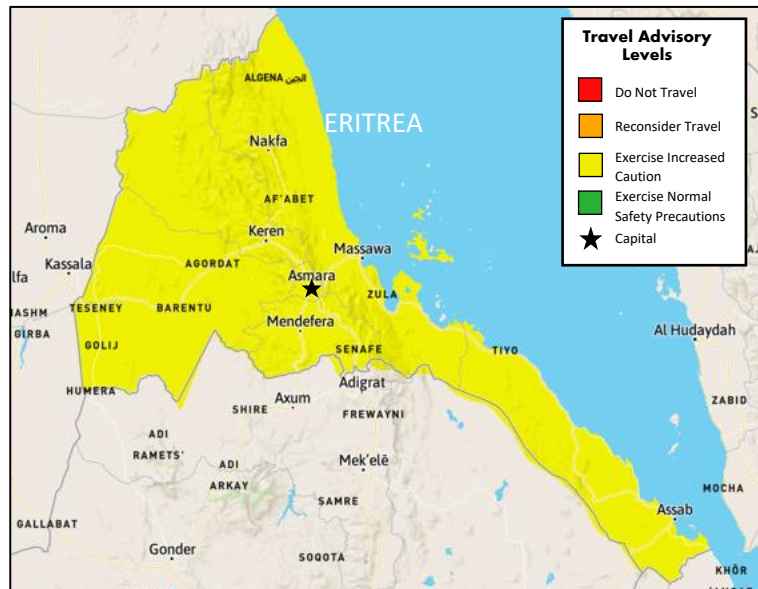


Eritrea

Risk Level: **Moderate Risk**

Country Overview:

The security situation in some parts of Eritrea is extremely dangerous. It is advised to exercise increased caution in Eritrea due to travel restrictions, limited consular assistance, and political volatility. There is an overall moderate risk to personal safety and security because of ongoing instability, tensions with Ethiopia, and the presence of landmines. Landmines can be found in many remote areas in Eritrea, particularly in Nakfa, AdiKeih, Arezza, the 40 km-wide regions between the Mereb and Setit Rivers, and in the region north and west of Keren, areas near Ghinda, Massawa, Barentu, Agordat, Dekemhare, and south of Tessenae.



On Saturday, November 14, 2020, three rockets were fired at Asmara and seemed to have been aimed at the capital's airport. The leader of Ethiopia's northern Tigray region confirmed, on the following Sunday, that his forces fired the missiles. There has been a long-standing feud between Eritrea and the Tigray People's Liberation Front (TPLF). Eritrea could be drawn into the conflict between Tigray and Ethiopia, creating widespread concern for war escalation and further retaliation.

It is advised to avoid all travel within 25km of Eritrea's land borders, with the exceptions of the towns of Senafe and Tessenei, and the border crossings at Debay Sima – Burre, Serha – Zalambessa, and Kesadika (Adi Kuala) – Rama, plus the main paved roads leading to those crossings. All border crossings between Eritrea and Ethiopia are closed, and all foreign nationals, including diplomats, need to apply for a travel permit well in advance to leave Asmara.

In Eritrea, the U.S. government cannot provide emergency services to U.S. citizens because U.S. government employees must obtain special clearance to travel outside Asmara. Eritrean law enforcement officials regularly block access to foreign nationals in detention. Therefore, the U.S. Embassy may not receive notification or be allowed access to you if you are detained or arrested.

866-340-8569

info@wwfocus.com

www.focuspointintl.com





Ethiopia
Risk Level: **Moderate Risk**

Country Overview:

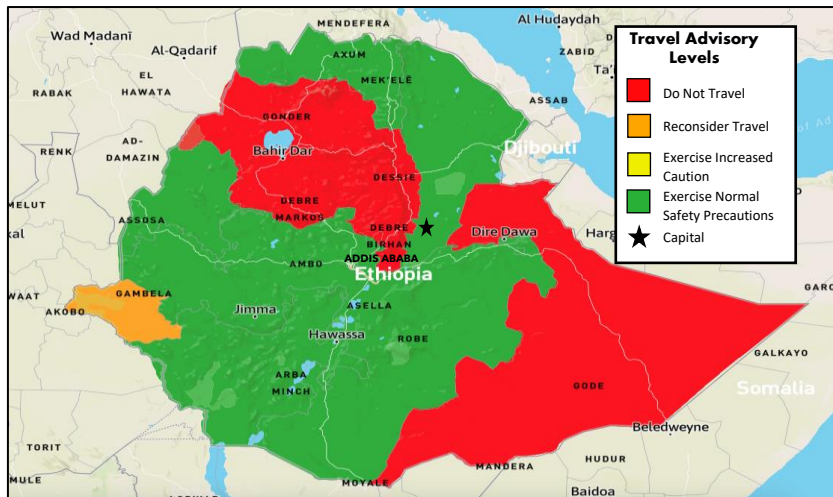
The security climate in some parts of Ethiopia is highly dangerous, with some country regions being extremely unsafe. It is advised to exercise increased caution in Ethiopia due to the potential for civil unrest, crime, and terrorism.

On February 15, 2022, the House of People’s Representatives announced the end of a nationwide state of emergency that lasted from November 2, 2021.

Government forces have had recent success in pushing back Tigrayan rebel forces and have managed to retake towns and cities that had previously fallen to rebel forces. Travelers are advised to avoid traveling to Ethiopia and leave the country if they have not already done so due to the extreme risk and uncertainty of the conflict. People of the Oromo or Tigrayan ethnicity may still face scrutiny at airports or during police operations and should always be vigilant.

It is advised to avoid all travel to Ethiopia's Somali region and the border areas with Sudan, Eritrea, Kenya, and South Sudan, including the Gambela region. It is further advised to limit all but essential travel to the Danakil Desert in the Afar region and the Guji and Borena zones of the Oromia region. Due to recent outbreaks of violence and property destruction, it is advised to avoid travel to the Amhara region. Avoid travel to the East Hararge region and the Guji zone of Oromia State, the Benishangul Gumuz, and the western part of Oromia State due to armed conflict and civil unrest.

The Government of Ethiopia has restricted or shut down the internet, cellular data, and phone services during and after civil unrest. These restrictions impede the U.S. Embassy's ability to communicate with and provide consular services to U.S. citizens in Ethiopia. The U.S. Embassy has limited ability to provide emergency services to U.S. citizens outside of Addis Ababa.





Georgia
Risk Level: **Low Risk**

Country Overview:

The security situation in some areas of Georgia is dangerous, with specific parts of the country being extremely unsafe. Though it is advised to exercise standard safety precautions in Georgia, avoid travel to the Russian-occupied regions of South Ossetia and Abkhazia due to civil unrest, crime, and landmines. There is a heightened risk to personal safety and security in these parts of Georgia because Russian troops and border guards occupy both regions. Several attacks, criminal incidents, and kidnappings have occurred.



It is advised to avoid all travel to South Ossetia and Abkhazia's breakaway regions and limit all but essential travel to areas near the Administrative Boundary Lines with Abkhazia and South Ossetia. Entering these Russian-occupied territories will likely result in arrest, imprisonment, or a fine.

Inter-city travel and municipal and public transport are now operating normally without restrictions. Face masks are required on all public transport and taxis. Land borders have reopened except the Azerbaijan land border, which requires special permission from the Ministry of Foreign Affairs of Azerbaijan to cross.

The U.S. government is unable to provide emergency services to U.S. citizens traveling in South Ossetia and Abkhazia.

866-340-8569

info@wwfocus.com

www.focuspointintl.com





Haiti

Risk Level: **High Risk**

Country Overview:

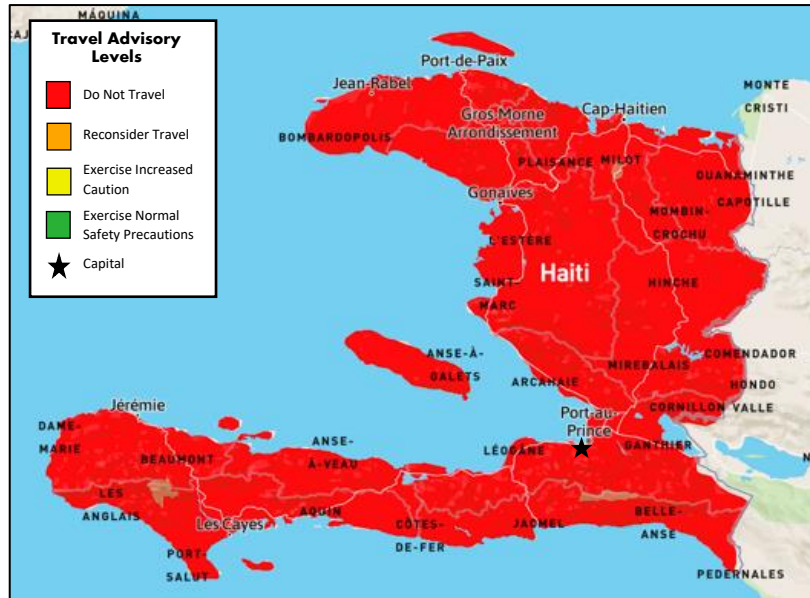
The security situation in Haiti is unstable and extremely dangerous. It is advised to reconsider travel to Haiti due to civil unrest and crime. There is a high risk to personal safety and security due to the widespread violent and unpredictable demonstrations in Port-au-Prince and elsewhere in the country.

Haiti has been gripped by a series of violent protests and riots since early July 2018, leaving dozens of people dead. What began as social unrest in response to a proposed government hike in fuel prices

has since morphed into an anti-corruption protest campaign, with deadly violence reigniting in November 2018 and again in February and September-December 2019, with sporadic killings reported at protests throughout 2020. The country is currently plagued by severe fuel shortages, which have impacted essential service provision countrywide. Medical services, electricity, and communications have been heavily affected. Travelers are advised to ensure they have adequate supplies for their stay.

The Haitian President, Jovenel Moïse, on the night of 6-7 July, was assassinated at his private residence in Port-au-Prince during an attack. Martine Moïse, The First Lady, was also severely injured. The following day, Claude Joseph declared his leadership as Interim Prime Minister and issued an executive order instating a state of siege for 15 days. While the situation remained relatively calm, gang violence has been a resurgence since.

It is advised to reconsider all travel to Haiti and, in particular, to avoid the Bel Air, Carrefour, Cité Soleil, and Martissant neighborhoods in Port-au-Prince. Do not drive through roadblocks, and if you come across a roadblock, turn around and get to a safe area. Travelers are sometimes followed, violently attacked, and robbed shortly after leaving Port-au-Prince. The U.S. Embassy requires its personnel to use official transportation to and from the airport. Robbers and carjackers have attacked private vehicles stuck in heavy traffic congestion and often target lone drivers, particularly women driving alone.



866-340-8569

info@wwfocus.com

www.focuspointintl.com





Honduras

Risk Level: **High Risk**

Country Overview:

The security situation in Honduras is highly dangerous, with a specific part of the country being extremely unsafe. It is advised to reconsider travel to Honduras due to crime. There is a heightened risk to personal safety and security because of violent crimes, such as homicide and armed robbery.

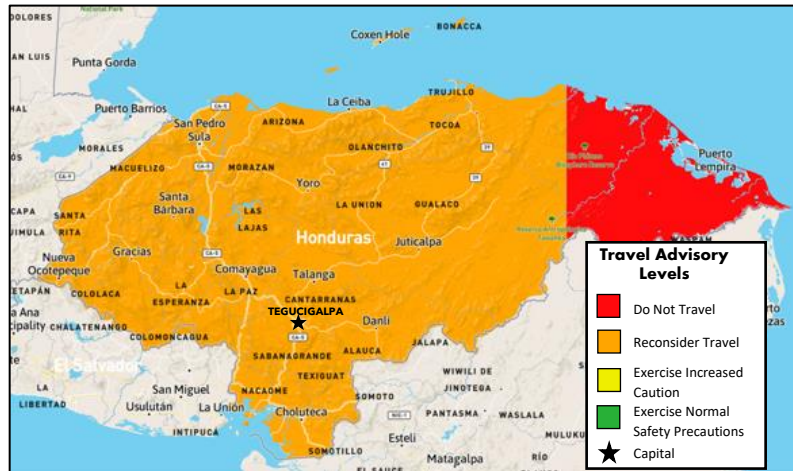
Protests have regularly occurred across Honduras since June 2019. Travelers should obey the advice of local authorities and avoid all demonstrations. In

addition, there has been a sharp increase in cases of dengue fever in Honduras, particularly in the departments of Cortés, Yoro, Olancho, and Santa Bárbara. As a result, the Honduran Government has declared a state of emergency. Travelers should monitor local media for updates.

Gracias a Dios is an isolated region with high criminal activity and drug trafficking levels. Infrastructure is weak, government services are limited, and police and military presence is scarce. It is advised to avoid all travel to Gracias a Dios Department and limit all travel to the rest of the country unless it's essential.

Preventative measures and restrictions are in place, including a nationwide curfew from 8 pm to 5 am. Local authorities have set specific time slots during which you can leave your home once within ten days. These are set according to your national I.D. card number. You must wear face-covering in public. If you violate the restrictions, you could be fined for endangering public health. Obey the instructions of local authorities, including those related to physical distancing. Avoid crowded areas.

The U.S. government has limited ability to provide emergency services to U.S. citizens in Gracias a Dios.



866-340-8569

info@wwfocus.com

www.focuspointintl.com





India

Risk Level: **Moderate Risk**

Country Overview:

The security situation in some parts of India is highly dangerous, with specific areas of the country being extremely unsafe. It is advised to exercise increased caution in India due to crime and terrorism. There is an overall moderate risk to personal safety and security because of terrorist and insurgent activity, civil unrest and the potential for armed conflict, and violent crime, such as sexual assault.

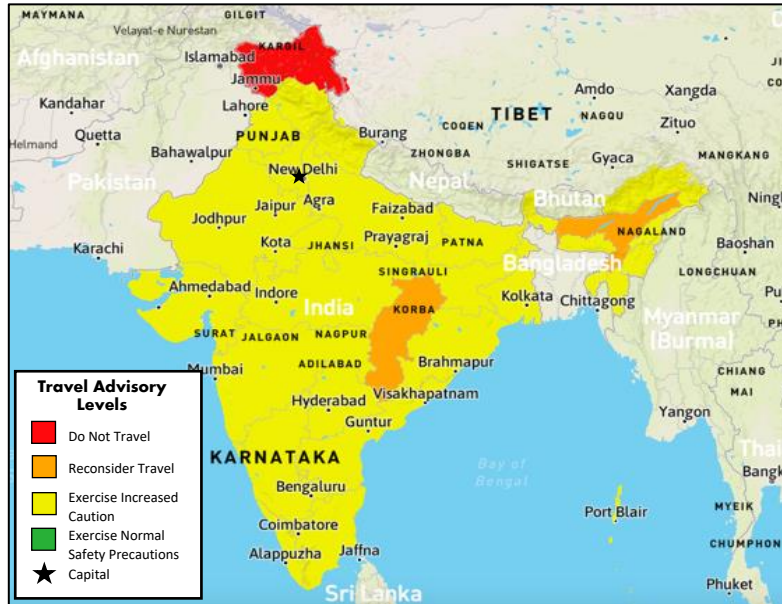
Following a terrorist attack in the Kashmir region on February 14, 2019, tensions have been heightened between India and Pakistan. On August 5, 2019,

India's Government announced constitutional changes that will affect Jammu and Kashmir's internal political status. An increased security presence is now in place.

Covid-19 cases in India are low and continue falling across the country. Most the Indian States are starting to relax restrictions, including night and weekend curfews. The educational institutions have started gradually reopening, and wearing masks is no longer mandatory in public spaces. Some restrictions differ by state, and travelers are advised to familiarise themselves with the restrictions in their location.

The Indian Government has agreed to repeal the controversial agriculture laws that sparked widespread and prolonged farmer protests in many parts of the country. This should bring an end to the years-long protests that rocked the country and threatened electoral success for the ruling BJP in forthcoming elections.

It is advised to avoid all travel to Jammu and Kashmir (except the Ladakh region) and the India- Pakistan border (except Atari crossing). It is also advised to limit all but essential travel to the Northeastern states (Assam, except Guwahati, Nagaland, and Manipur), Chhattisgarh, and neighboring states' border areas.



866-340-8569

info@wwfocus.com

www.focuspointintl.com





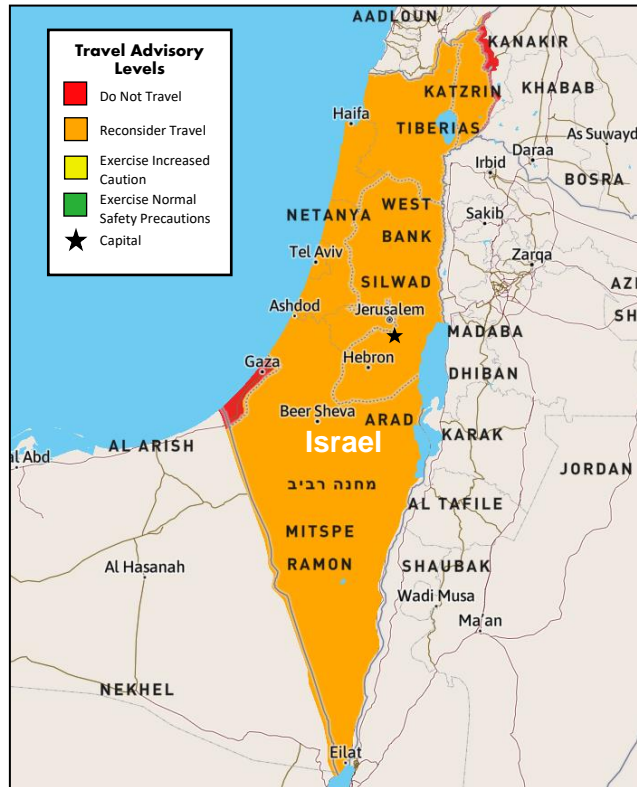
Israel

Risk Level: **Moderate Risk**

Country Overview:

The security situation in Israel, the West Bank, and Gaza are unstable, and certain areas are incredibly unsafe. Travelers to Israel or the Palestinian Territories are advised to exercise increased caution due to terrorism, civil unrest, and armed conflict. There is an overall moderate risk to personal safety and security because of clashes between Palestinians and Israeli authorities.

Travelers to Israel should remain vigilant following the latest cross-border hostilities between Israel and Palestinians in Gaza. Overall violence involved militants in Gaza firing more than 4000 rockets into southern Israel, with hundreds of Israeli airstrikes launched in response. Egypt has facilitated a ceasefire between Israel and Gaza which came into effect on May 21, 2021. The peace remains fragile and has continually been tested. It is advised to limit all but essential travel to the West Bank and within 5km of Gaza and to avoid all travel to Gaza and the following areas of the Golan Heights: East of Route 98, Shebaa Farms, Ghajjar, and within 500m of the border with Lebanon east of Metula, including the northern edge of town.



There is a heightened risk of terrorist attacks in Israel and the Occupied Palestinian Territories. These attacks could be indiscriminate and occur in places frequently visited by foreigners, including tourist sites, public transport hubs, and busy public spaces. On April 7, 2022, two civilians were killed in a shooting attack in Tel Aviv, while three other attacks occurred in March 2022 that claimed the lives of eleven Israelis in Hadera, Bnei Brak, and Be'er Sheva.

The Catholic Easter, Orthodox Easter, Passover, and Ramadan will all coincide in April 2022. This could heighten tensions between the groups should these holidays overlap with the Jewish high holidays of Succoth, Passover, Yom Kippur, and Rosh Hashana, especially after Friday prayers and religious holidays and anniversaries. Previous clashes have occurred, and travelers are advised to steer clear of demonstrations and highly charged confrontations.

Israel has stepped up its campaign against Iran as the U.S. and Iran are engaged in talks with the E.U. to restore the JCPOA, more commonly known as the Iran Nuclear Deal. Israeli spy networks have targeted Iranian sites related to their uranium enrichment program. This has led to Iran-backed forces engaging in rocket attacks on Israel. Rising tensions in the region are likely to see further aggressive acts in the short term.

866-340-8569

info@wwfocus.com

www.focuspointintl.com





Kenya

Risk Level: **Moderate Risk**

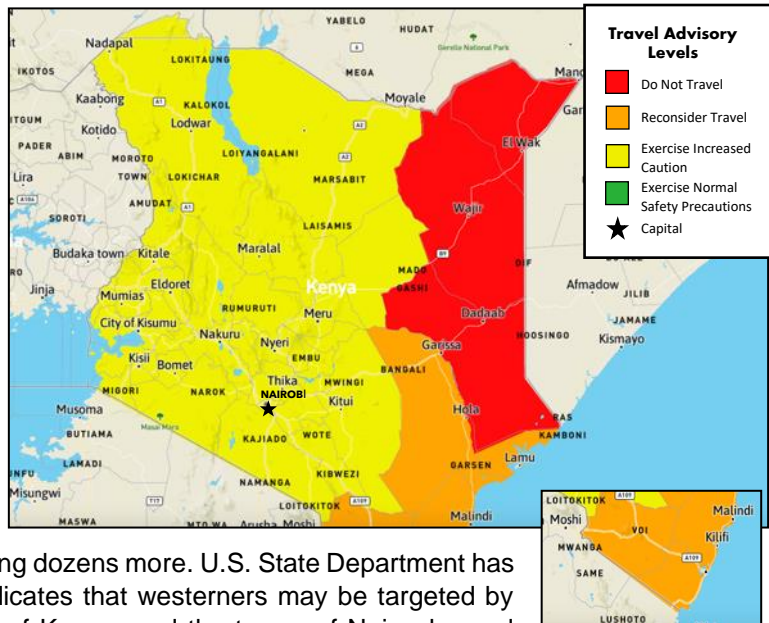
Country Overview:

In some areas of Kenya, the security situation is highly dangerous, with specific parts of the country being extremely unsafe. It is advised to exercise increased caution in Kenya due to terrorism, health issues, and crime. There is an overall moderate risk to personal safety and security because of terrorist attacks and violent crimes, such as armed carjacking, mugging, home invasion, and kidnapping.

On January 15, 2019, the Islamic militant group Al-Shabaab attacked the Dusit D2 complex in Nairobi, killing more than 20 people and injuring dozens more. U.S. State Department has warned that credible information indicates that westerners may be targeted by extremists in Nairobi, coastal areas of Kenya, and the towns of Naivasha and Nanyuki. The National Police Service of Kenya has since issued a statement regarding enhancing security in the country through April 2022.

Cholera cases have also been detected in the counties of Narok, Kajiado, Garissa, and Machakos. Travelers are advised to monitor the latest updates from the World Health Organization.

It is advised to limit all but essential travel to Turkana County, coastal areas from Lamu county to Mombasa and its outskirts, and the A2 highway from Isiolo to Moyale due to crime. It is also advised to avoid all travel to border regions with Somalia, South Sudan, and Ethiopia.



866-340-8569

info@wwfocus.com

www.focuspointintl.com





Lebanon

Risk Level: **High Risk**

Country Overview:

The security situation in Lebanon is highly dangerous, with some parts of the country being extremely unsafe. It is advised to reconsider travel to Lebanon due to crime, terrorism, and armed conflict. There is a high level of risk to personal safety and security because of terrorist activity, armed clashes, kidnapping, and outbreaks of violence near Lebanon's borders with Syria and Israel.

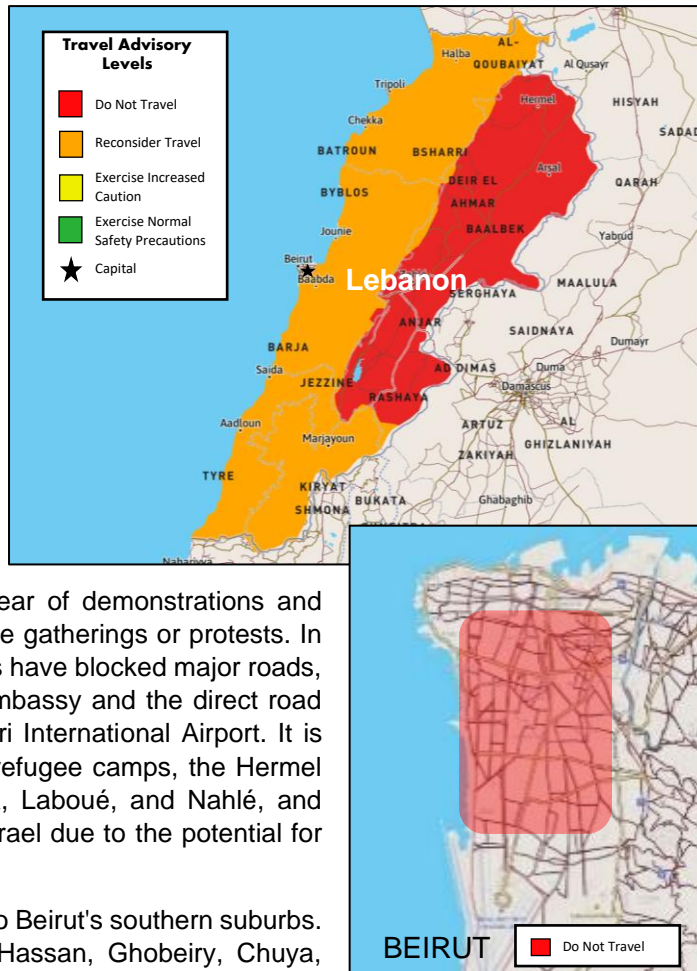
Lebanon has witnessed frequent demonstrations by protesters seeking changes in Government since October of 2019. While some protests have been peaceful, most have involved violence.

U.S. citizens in Lebanon should keep clear of demonstrations and exert caution if in the proximity of any large gatherings or protests. In the current period of civil unrest, protesters have blocked major roads, including the primary route to the U.S. Embassy and the direct road between downtown Beirut and Rafiq Hariri International Airport. It is advised to avoid all travel to Palestinian refugee camps, the Hermel Area, including Arsal, Ras Baalbek, Qaa, Laboué, and Nahlé, and within 5km of the border with Syria and Israel due to the potential for armed conflict.

It is advised to limit all but essential travel to Beirut's southern suburbs. This includes the neighborhoods of Bir Hassan, Ghobeiry, Chuya, Haret Hraik, Burj Al Brajne, Mraije, Er Rouais, and Laylake. This excludes the main airport highway, the Beirut-Saida (Sidon) road and west of the coast, and the region between the airport highway and the coast south of Abbas El Mousawi Road.

It is further advised to limit all but essential travel to all other territories of Akkar district between 3 miles (5km) from the Syrian border and the Halba, Aabdeh, and Qoubaiyat highway, including the towns of Halba and Qoubaiyat; the city of Tripoli; the town of Brital, and the area around it up to 3 miles (5km) from the Syrian border, and south of Nahlé town. This excludes Baalbek town; the towns of Rachaiya, Hasbaiya, and Khiam, and the area between these towns up to 3 miles (5km) from the Syrian border; within 500m of the Ain el Hilweh Palestinian refugee camp in Saida (Sidon); and south of the Litani River except the main Naqoura-Tyre-Saida (Sidon)-Beirut highway and all districts to the west of it.

The Lebanese Government cannot assure the protection of U.S. citizens against sudden eruptions of violence. Neighborhood, family, or sectarian disputes can spiral out of control quickly and, in turn, can lead to gunfire or other violence with no clear warning.



866-340-8569

info@wwfocus.com

www.focuspointintl.com



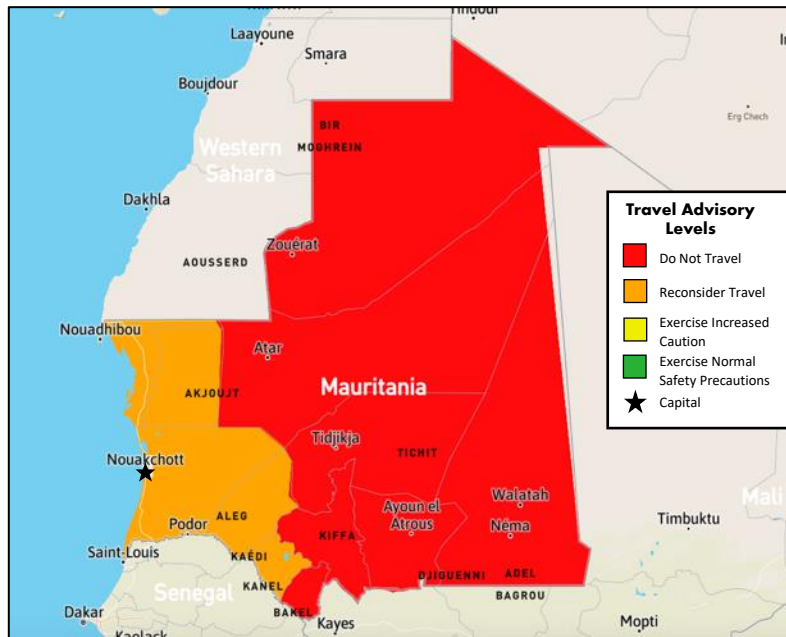


Mauritania
Risk Level: **High Risk**

Country Overview:

The security situation in Mauritania is highly dangerous, and specific parts of the country are extremely unsafe. It is advised to reconsider travel to Mauritania due to crime and terrorism. There is a high level of risk to personal safety and security because of activities by terrorist groups and violent crimes, such as mugging, armed robbery, kidnapping, rape, and assault.

It is advised to avoid travel to the province of Tiris Zemmour (except the town of Zouérat); the province of Adrar (east of Atar); the provinces of Tagant, Hodh el Chargui, Hodh El Gharbi, Assaba, and Guidimaka; and within 25km of the Western Sahara border (except the Nouakchott - Nouadhibou corridor).



The Government of Mauritania designates certain areas off-limits to foreigners and most Mauritians. These "No Movement Zones" are extremely dangerous due to their proximity to Mali, where armed groups engaged in an active insurgency carry out cross-border attacks into Mauritania. Negative PCR test results are required upon entry due to COVID-19.

The U.S. government has limited ability to provide emergency services to U.S. citizens in Mauritania as U.S. government employees must obtain special authorization to travel outside Nouakchott.

866-340-8569

info@wwfocus.com

www.focuspointintl.com



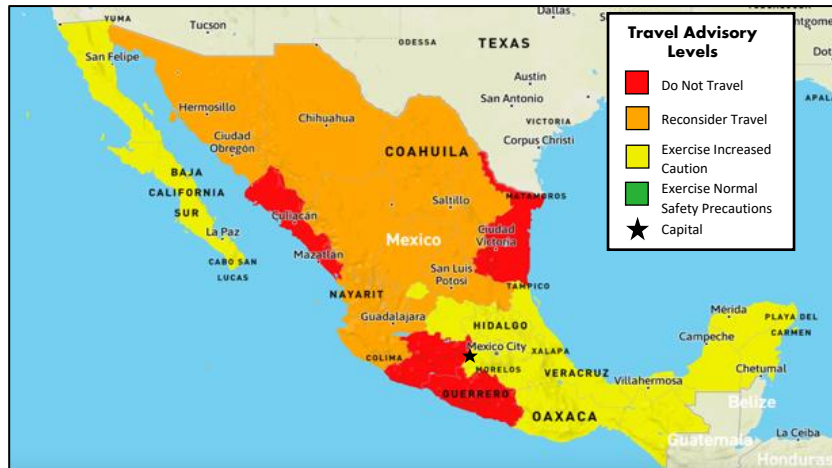


Mexico

Risk Level: **Moderate Risk**

Country Overview:

The security situation in some parts of Mexico is highly dangerous, with specific areas of the country being extremely unsafe. Travelers to Mexico should exercise increased caution due to crime. There is a high level of risk to personal safety and security in certain areas because of widespread violent crime, such as homicide, kidnapping, carjacking, and robbery.



It is advised to avoid all travel to Colima state, Guerrero state, Michoacán state, Sinaloa state, and Tamaulipas state. It is further advised to limit all but essential travel to Chihuahua state, Coahuila state, Durango state, Estado de Mexico state, Jalisco state, Morelos state, Nayarit state, Nuevo Leon state, San Luis Potosi state, Sonora state, and Zacatecas state. Violent crime – such as homicide, kidnapping, carjacking, and robbery is widespread. Armed criminal groups have targeted and robbed commercial vessels, oil platforms, and offshore supply vessels in the Bay of Campeche.

Mexico is experiencing severe drought, impacting about 85% of the country. Mexico City is suffering the worst drought in 30 years, with officials concerned about meeting water demands in the city. Lake Cuitzeo has shrunk by 75%, exacerbated by deforestation and infrastructure development. In turn, the dry lake beds create dust storms leading to additional health problems in the surrounding communities.

Mexico is experiencing high levels of COVID-19 infections and has registered amongst the highest in the world for deaths. Stay-at-home orders have been lifted in some areas, and some transportation and business operations have resumed. Travelers are advised to reconsider traveling to Mexico.

866-340-8569

info@wwfocus.com

www.focuspointintl.com



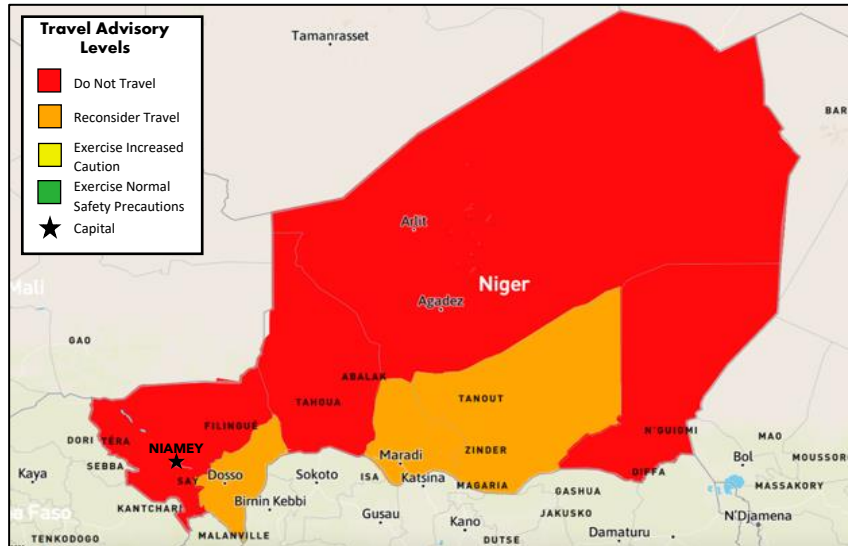


Niger

Risk Level: **High Risk**

Country Overview:

The security situation in Niger is highly dangerous, with large parts of the country being extremely unsafe. It is advised to reconsider travel to Niger due to crime and terrorism. There is a high level of risk to personal safety and security because of terrorist attacks, kidnapping threats, and violent crimes, such as armed robbery. The threat of terrorist attacks remains high, with attacks targeting government facilities, local and foreign.



It is advised not to travel at all to the following parts of Niger: all areas of the country north of the city of Abalak, including the Air Massif region; the province of Agadez (including the road linking Assamakato Agadez and the city of Agadez); areas of Tahoua province north of the city of Tahoua, including the city itself; the area of Tillabéri province north of Niamey, including the road from Niamey to Gao and the road from Niamey to Menaka; areas within 40km of the border with Nigeria in Diffa, Zinder, and Maradi provinces; and the Parc du W, plus the contiguous Dosso and Tamou hunting zones. It is further advised to limit all but essential travel to the rest of Niger, including the capital city Niamey.

The U.S. government has limited ability to provide emergency services to U.S. citizens in remote and rural areas as U.S. government employees must obtain special authorization to travel outside of the capital.

866-340-8569

info@wwfocus.com

www.focuspointintl.com





Country Risk Summaries Cont.



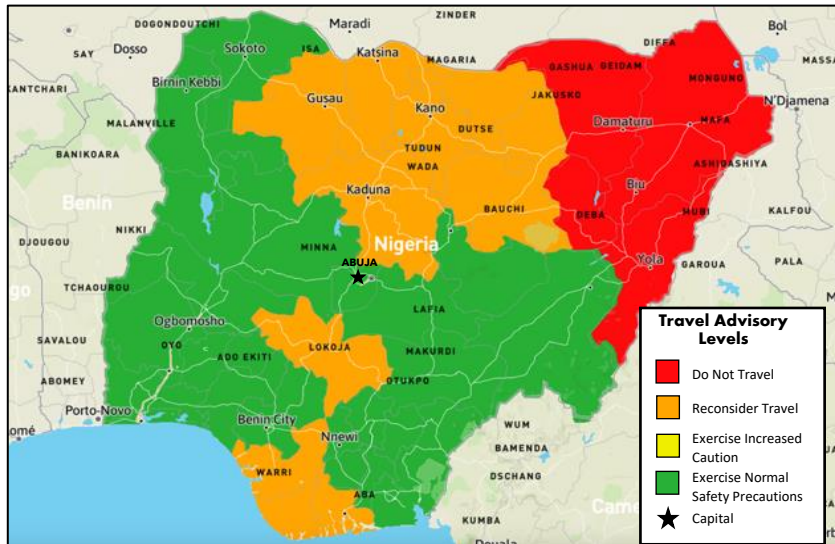
Nigeria

Risk Level: **High Risk**

Country Overview:

The security situation in Nigeria is highly dangerous, and specific parts of the country are extremely unsafe. It is advised to reconsider travel to Nigeria due to crime, terrorism, and piracy. There is a high level of risk to personal safety and security because of the threat posed by extremist organizations, kidnappings, and violent crimes, such as armed robbery, assault, carjacking, and rape.

Since October 13, 2020, multiple demonstrations have occurred nationwide, including areas within Lagos and Abuja's districts, protesting Nigeria's Special Anti-Robbery Squad (SARS). Although most demonstrations are peaceful, some have become violent and have shut down major thoroughfares and bridges. Travelers should exercise caution, monitor local media, and avoid crowds or demonstrations. Nigeria has also been experiencing weeks of renewed protests and civil unrest against police brutality, since the shooting of a young Nigerian by a SARS police officer, on October 3, 2020. These protests have seen extreme violence and retaliation by police forces, resulting in the killing of 51 civilians and 18 security forces.



Throughout 2020, the number of kidnappings in Nigeria, particularly in the northern and Middle Belt states, has steadily increased compared to previous years. Gangs and unidentified individuals have carried out most of these attacks, but Boko Haram militants were behind some of them in northeast Nigeria. Even though the kidnappings often end without bloodshed once a ransom is paid, these attacks can result in injuries and fatalities. Criminal groups usually fire indiscriminately at vehicles to stop them. Reconsider overland travel across the country until further notice due to an ongoing spike in kidnapping-for-ransom and bandit attacks.

It is advised to avoid travel to Borno State, Yobe State; Adamawa State; Gombe State; riverine areas of Delta, Bayelsa, Rivers, Akwa Ibom, and the Cross River States; and within 20km of the border with Niger in Zamfara State. It is also advised to limit all but essential travel to Bauchi State; Zamfara State; Kano State; Kaduna State; Jigawa State; Katsina State; Kogi State; within 20km of the border with Niger in Sokoto and Kebbi States; non-riverine areas of Delta, Bayelsa and Rivers States; and Abia State.

The Government has started relaxing the lockdown restrictions in Lagos and Abuja and has replaced them with new requirements. These include a nationwide curfew from 12 am till 4 am and the mandatory use of face masks in public. Most states have their own restrictions on movement, and travelers are advised to adhere to the requirements of their respective locations.

866-340-8569

info@wwfocus.com

www.focuspointintl.com



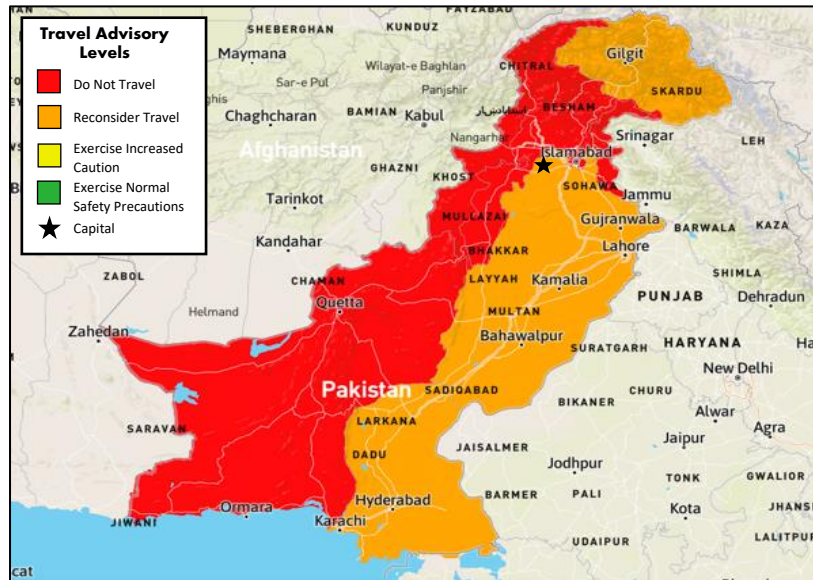


Pakistan

Risk Level: **High Risk**

Country Overview:

The security situation in Pakistan is highly dangerous, and a significant part of the country is extremely unsafe. It is advised to reconsider travel to Pakistan due to terrorism. There is a high risk to personal safety and security because terrorist attacks remain frequent and political demonstrations often become violent. Travelers should continue to exercise caution, monitor news reports, and follow the advice of local authorities. On May 11, 2019, armed militants attacked the Pearl Continental Hotel in Gwadar, in Balochistan province, killing five people and adding to the current tension surrounding Pakistani-administered Kashmir areas.



It is advised to avoid all travel to Balochistan; the Federally Administered Tribal Areas; Khyber-Pakhtunkhwa (excluding Chitral district); and border areas with Afghanistan and India (excluding Lahore, Wagah, Kasur, Narowal, and Sialkot). It is recommended to limit all but essential travel to the rest of Pakistan.

Terrorist groups continue organizing attacks in Pakistan. A local history of terrorism and ongoing ideological aspirations of violence by extremist groups has led to indiscriminate attacks on civilians, local military, and police targets. Terrorists may attack with little or no warning, targeting transportation hubs, markets, shopping malls, military installations, airports, universities, tourist locations, schools, hospitals, places of worship, and government facilities. Terrorists have targeted U.S. diplomats and diplomatic facilities in the past.

The U.S. government is restricted in providing emergency services to U.S. citizens in Pakistan due to the security environment.

866-340-8569

info@wwfocus.com

www.focuspointintl.com





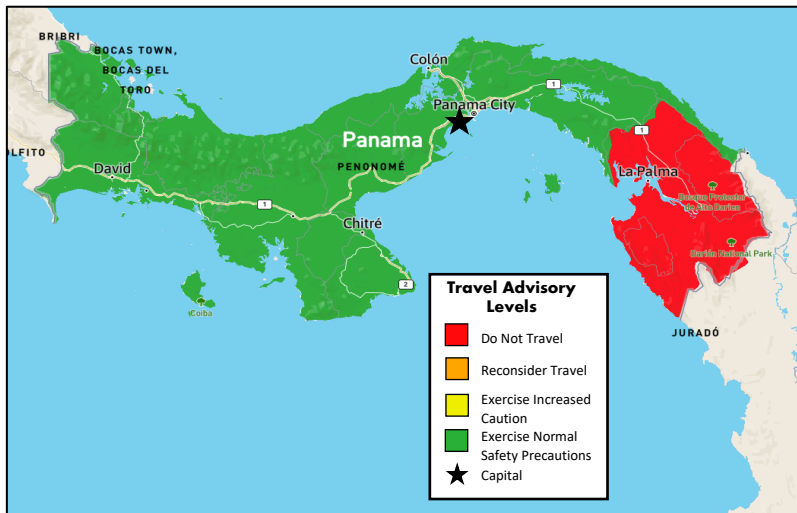
Panama

Risk Level: **Low Risk**

Country Overview:

The security situation in Panama is relatively safe, but a specific region within the country has an extreme risk due to the presence of criminal elements and the operation of drug and human trafficking networks. Moreover, emergency response and consular assistance are limited in some areas. Overall, travelers should exercise normal precautions in Panama.

It is advised to avoid all travel to parts of the Darién Region, Mosquito Gulf, and particularly all areas south of Yaviza.



There may be demonstrations to protest internal Panamanian issues or, more rarely, manifestations of anti-American sentiment. While most demonstrations are non-violent, the Panamanian National Police have used tear gas and riot control munitions in response to demonstrations, particularly when roadways are blocked or aggression is used against the police. Panama City, Colon, and Chiriqui provinces have the highest crime rates. Crimes include shootings, home invasions, rapes, armed robberies, muggings, and thefts.

The U.S. government has limited ability to provide emergency services to U.S. citizens in this region as U.S. government personnel must obtain prior approval before traveling there and face additional restrictions before such travel is approved.

866-340-8569

info@wwfocus.com

www.focuspointintl.com



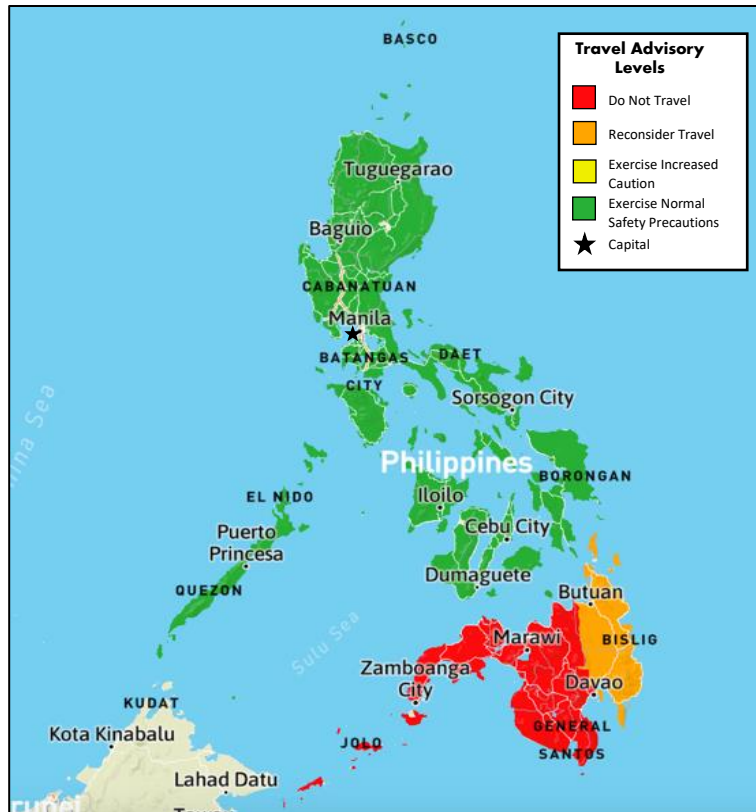


Philippines

Risk Level: **Moderate Risk**

Country Overview:

In some parts of the Philippines, the security situation is highly dangerous, with specific areas being extremely unsafe. It is advised to exercise increased caution throughout the country due to crime, terrorism, and civil unrest. There is a high level of risk to personal safety and security because of occasional kidnappings and bombings and widespread criminal activity, such as con games, pickpocketing, internet scams, and credit/ATM card fraud. Travelers should keep up to date with local information and avoid any demonstrations. The Philippines has seen a resurgence in the Poliovirus nationwide, and it is advised that travelers consult their doctor before travel. There have also been numerous cases of Dengue fever which has now exceeded the epidemic threshold.



It is advised to avoid all travel to western and central Mindanao and the Sulu Archipelago (including the southern Sulu Sea) because of terrorist activity and clashes between the military and insurgent groups. Limit all travel unless it is crucial to the remainder of Mindanao (excluding Siargao Islands, Dinagat, and Camiguin) and the south of Cebu province, including the municipalities of Badian and Dalaguete and the surrounding areas leading to Badian and Dalaguete, due to the threat of terrorism.

Terrorist and armed groups continue to organize plans for bombings, possible kidnappings, and other offensive maneuvers in the Philippines. Armed groups and terrorists may attack with little or no warning, targeting shopping malls and markets, tourist locations, as well as local government facilities. The Philippine Government has declared a "State of National Emergency on Account of Lawless Violence in Mindanao."

Authorities have permitted foreign nationals who are fully vaccinated to enter the Philippines subject to proof of a negative COVID-19 test. Foreign nationals who aren't fully vaccinated cannot enter the country. Face masks are mandatory on public transport and in public spaces.

866-340-8569

info@wwfocus.com

www.focuspointintl.com

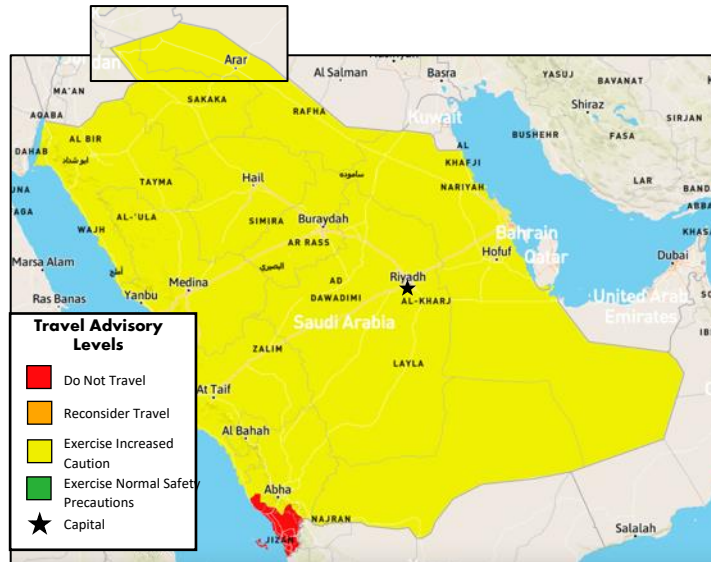




Saudi Arabia
Risk Level: **Moderate Risk**

Country Overview:

In some parts of Saudi Arabia, the security situation is highly dangerous, with specific areas being extremely unsafe. It is advised to exercise increased caution in Saudi Arabia due to terrorism and armed conflict. There is an overall moderate risk to personal safety and security because terrorist groups continue plotting possible attacks in the country. Rebel groups operating in Yemen have launched missiles, drones, and IEDs into Saudi Arabia, specifically targeting populated areas and critical national infrastructure. Since the first missile attack on Riyadh on November 4, 2017, there have been 11 intercepted missiles, with the most recent on December 6, 2021.



It is advised to avoid all travel within 50 miles of the Saudi-Yemen border. This includes the cities of Jizan and Najran, and Qatif in the Eastern province and its suburbs, including Awamiyah. Abha International Airport also falls in this avoid advisory.

Regional forces hostile to Saudi Arabia have conducted destructive and sometimes lethal attacks against various targets, including critical infrastructure, airports, military facilities, energy facilities throughout the country, and targeting vessels in Red Sea shipping lanes. The civilian airport in Abha, areas close to Jeddah, Riyadh, Yanbu, military deployments in the south, and specific oil and gas establishments are all examples of recent targeted attacks. The Islamic Republic of Iran (IRI) has supplied Yemen-based Houthis and other regional proxy groups with weapons, including missiles, rockets, and drones. Houthi militants continue to organize and conduct attacks against locations in Saudi Arabia. Violence associated with Iran-supported groups represents a significant threat. U.S. citizens living and working near military bases and critical civilian infrastructure, particularly in the areas near the border with Yemen and the Eastern Province, are at heightened risk of missile and drone attacks.

866-340-8569

info@wwfocus.com

www.focuspointintl.com



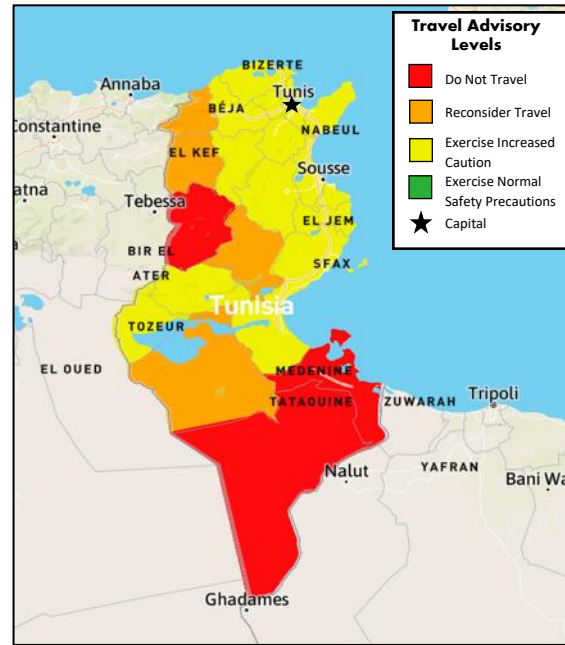


Tunisia

Risk Level: **Moderate Risk**

Country Overview:

In some parts of Tunisia, the security situation is highly dangerous, with specific areas being extremely unsafe. It is advised to exercise increased caution in Tunisia due to terrorism. Terrorist groups active in the country pose a significant threat to travelers in the region. On June 27, 2019, two suicide attacks targeting security personnel in central Tunis killed at least one police officer and wounded several people. A state of emergency has been in effect since November 24, 2015, after a suicide attack on a police bus. The state of emergency has been extended numerous times, with February 2022 being the most recent.



Tunisian security forces clashed with demonstrators in several cities for four consecutive nights from January 18, 2021. The towns affected include Ettadhamen and other areas of Tunis and Sfax, Gafsa, Le Kef, Bizerte, Kasserine, Sousse, and Monastir. The protests were sparked by economic hardship in the country that the COVID-19 pandemic has exacerbated. Around 1,000 people have been detained since the protests began.

On July 26, 2021, President Kais Saied removed the Prime Minister and suspended Parliament. He has also dissolved the cabinet. This is in response to the widespread protests calling for the dismissal of the Prime Minister and the Parliament due to a spike in COVID-19 cases exacerbating the country's economic crisis. Critics have labeled the move a coup, and civil society groups are demanding a timeline for political action and restoration of the Parliament. As the political crisis continues, protests and violence are likely. Comply with all directives, including curfew orders, seek shelter at the first signs of unrest and monitor local media for situational updates.

It is advised to avoid all travel to the Mount Chaambi National Park area, including the town of Kasserine, areas along the Libyan border, including the town of Ben Guerdane and the immediate surrounding area, and the militarized zone south of the towns of El Borma and Dhehiba. It is also advised to limit all but essential travel to areas south of, including the towns of Nefta, Douz, Medenine, and Zaris; and the Governorates of Le Kef, Jendouba, and Sidi Bou Zid.

The U.S. government has limited ability to provide emergency services to U.S. citizens in some areas of Tunisia.

866-340-8569

info@wwfocus.com

www.focuspointintl.com





Turkey

Risk Level: **Moderate Risk**

Country Overview:

The security situation in some parts of Turkey is highly dangerous, with specific areas of the country considered extremely unsafe. It is advised to reconsider travel to Turkey due to terrorism and arbitrary detentions.

There is a high level of risk to personal safety and security because terrorist groups continue to plot attacks in Turkey. Government security officials have detained individuals on scant or secret grounds that have appeared to be primarily politically motivated.



Turkey is currently experiencing severe wildfires across its southern provinces. Eight people have died, and dozens of villages have been evacuated. The Turkish Coastguard implemented a sea rescue of over 4000 tourists from beach resorts, and a power plant in Mugla province had to be evacuated. President Erdogan has declared parts of the affected provinces disaster zones. Travelers should reconsider traveling to southern Turkey soon.

It is advised to avoid all travel within 10km of the border of Syria and the city of Diyarbakir. It is further advised to limit all but essential travel to the provinces of Batman, Bingol, Bitlis, Diyarbakir, Gaziantep, Hakkari, Hatay, Kilis, Mardin, Sanliurfa, Siirt, Sirmak, Tunceli, and Van.

Authorities have reopened the country's land, sea, and air borders. All travelers who test positive are required to stay where they are until they test negative. Face masks are not mandatory in public spaces if well ventilated, and social distancing is adequate.

866-340-8569

info@wwfocus.com

www.focuspointintl.com





COVID-19 STATISTICS UPDATE:

| Country | Total Cases | Total Deaths | Total Recovered | Active Cases |
|--------------|-------------|--------------|-----------------|--------------|
| Afghanistan | 178,611 | 7,68 | 161,683 | 9,248 |
| Algeria | 265,754 | 6,874 | 178,341 | 80,539 |
| Azerbaijan | 792,445 | 9,707 | 782,603 | 135 |
| Burkina Faso | 20,853 | 382 | 20,439 | 32 |
| Burundi | 38,812 | 38 | 773 | 38,001 |
| Cameroon | 119,78 | 1,927 | 117,791 | 62 |
| CAR | 14,649 | 113 | 6,859 | 7,677 |
| Chad | 7,396 | 193 | 4,874 | 2,329 |
| Colombia | 6,090,520 | 139,759 | 5,923,901 | 26,86 |
| Congo | 24,079 | 385 | 20,178 | 3,516 |
| Cuba | 1,100,938 | 8,522 | 1,090,977 | 1,439 |
| DRC | 87,023 | 1,337 | 50,93 | 34,756 |
| Ecuador | 866,925 | 35,528 | N/A | N/A |
| Egypt | 515,645 | 24,613 | 442,182 | 48,85 |
| Eritrea | 9,733 | 103 | 9,629 | 1 |
| Georgia | 1,654,076 | 16,795 | 1,635,291 | 1,99 |
| Haiti | 30,615 | 835 | 29,312 | 468 |
| Honduras | 422,275 | 10,892 | 131,1 | 280,283 |
| India | 43,052,425 | 522,116 | 42,516,068 | 14,241 |
| Iran | 7,213,808 | 140,919 | 6,958,045 | 114,844 |
| Iraq | 2,323,878 | 25,201 | 2,295,073 | 3,604 |
| Israel | 4,047,693 | 10,658 | 4,009,152 | 27,883 |
| Kenya | 323,646 | 5,649 | 317,882 | 115 |
| Lebanon | 1,096,099 | 10,37 | 1,078,634 | 7,095 |
| Libya | 501,862 | 6,429 | 490,9 | 4,533 |
| Mali | 30,7 | 731 | 29,787 | 182 |
| Mauritania | 58,683 | 982 | 57,693 | 8 |
| Mexico | 5,731,635 | 324,033 | 5,032,356 | 375,246 |
| Myanmar | 612,697 | 19,434 | 591,544 | 1,719 |
| Niger | 8,908 | 309 | 8,498 | 101 |
| Nigeria | 255,679 | 3,143 | 249,886 | 2,65 |
| Pakistan | 1,527,669 | 30,368 | 1,493,933 | 3,368 |
| Panama | 770,463 | 8,18 | 759,15 | 3,133 |
| Philippines | 3,683,865 | 60,056 | 3,607,038 | 16,771 |
| Russia | 18,119,862 | 374,563 | 17,451,090 | 294,209 |

866-340-8569

info@wwfocus.com

www.focuspointintl.com



Country Risk Summaries Cont.



| Country | Total Cases | Total Deaths | Total Recovered | Active Cases |
|--------------|-------------|--------------|-----------------|--------------|
| Saudi Arabia | 753,124 | 9,075 | 740,008 | 4,041 |
| Somalia | 26,485 | 1,35 | 13,182 | 11,953 |
| South Sudan | 17,42 | 138 | 13,514 | 3,768 |
| Sudan | 62,084 | 4,929 | N/A | N/A |
| Syria | 55,79 | 3,15 | 52,065 | 575 |
| Tunisia | 1,039,532 | 28,533 | N/A | N/A |
| Turkey | 15,010,718 | 98,645 | 14,817,258 | 94,815 |
| Ukraine | 4,996,411 | 108,296 | N/A | N/A |
| Venezuela | 522,07 | 5,705 | 515,135 | 1,23 |
| Yemen | 11,818 | 2,148 | 9,001 | 669 |

866-340-8569

info@wwfocus.com

www.focuspointintl.com

