

---

# ENTIRE CONNECTION

---

**\*\*\*\* FOR ALL FAMIS ENTIRE CONNECTION USERS \*\*\*\***

People who use **Entire Connection** to download and print within FAMIS are required to re-license and install the newest version of Entire Connection. This is necessary because of the new security encryption (SSL) requirement.

## Entire Connection

(Note: This software is not required, but **MUST** be updated if you use it to access FAMIS for downloading, printing, or viewing purposes.)

Entire Connection is available through the TAMU CIS Software Evaluation and Loan Library (SELL) office at \$50/copy. It is available for Windows only.

To order the software, go to <http://cis.tamu.edu/customer-sales/sell/entire.php>:

- Click on the **Order Forms for Purchases** link on the left side of the web page.
- Click on the **Departmental Order Form** link and fill out the web form with the required information.
- Print the form and mail it with blank CD(s) to:

Texas A&M University  
Software Evaluation and Licensing Library, Room 1105  
Mail Stop 3363  
College Station, TX 77843-3363

The form can also be delivered to Room 1105 of the Computing Services Center, sent to Mail Stop 3363, or faxed to (979) 845-2074.

The price of the software is \$50 for each copy/user, but you only need to send the number of CDs that are needed to perform the installation. The same CD can be used for multiple installations.

Questions concerning the licensing of Entire Connection can be directed to the **CIS SELL office at (979) 862-4104**.

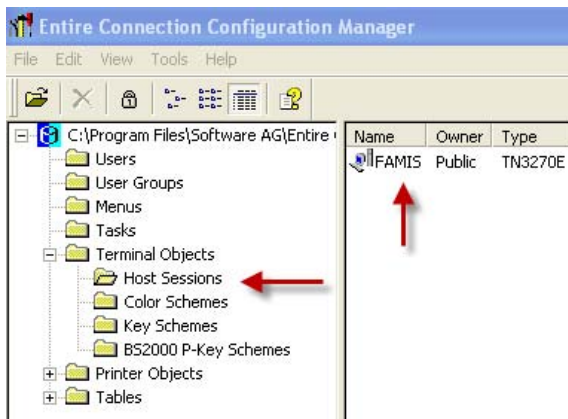
The instructions for configuring the software are on the next page. If you have already installed and configured the newest version of Entire Connection, you will also need to perform the following additional instructions to **activate the encryption**.

# ENCRYPTION INSTRUCTIONS FOR ENTIRE CONNECTION

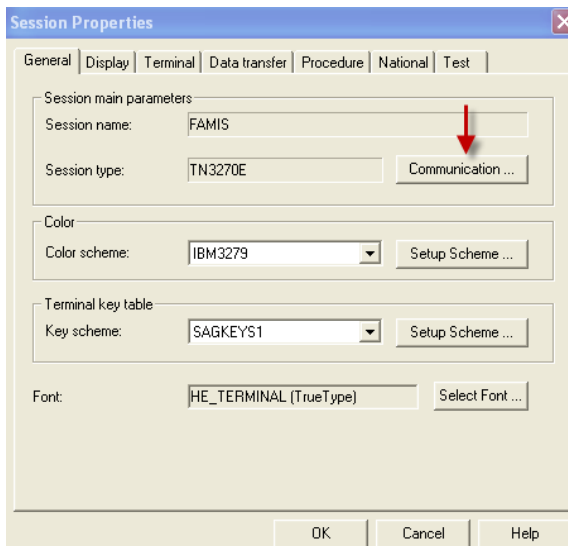
1. Open Entire Connection, click on **Utilities**, then select **Configuration Manager** from the drop down list.



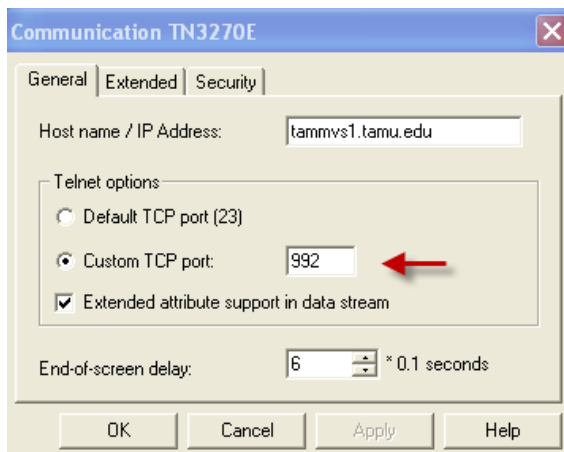
2. Under **Terminal Objects**, click on **Host Sessions**, right click on **FAMIS** (or your session name) and select **Modify**.



3. When the Session Properties appear, on the **General tab** select the **Communication button** opposite **Session Type: TN3270E**



4. Under the **General** tab of the Communication settings, select **Custom TCP port** and type **992** in the box available



5. Under the **Security** tab of the Communications settings, select **SSL/TLS handshake connection** and click on the **OK** button



Questions concerning the licensing of Entire Connection can be directed to the TAMU CIS SELL office at (979) 862-4104.

**Entire Connection Version 4.4.1 - PCC4410420200411  
Installation & Configuration Notes**

---

**Supported Operating Systems (see release notes)**

Windows 2000 Professional, Server or Advanced Server \*  
Windows XP Professional (32-bit), Home Edition (32-bit) \*  
Windows Server 2003 Standard Edition or Enterprise Edition \*

Fast user switching is not supported.

\* No terminal server support.

**Installation**

- 1) Install Entire Connection 4.4.1 from the product installation CD.
- 2) Configure Entire Connection 4.4.1 as follows.

Run Configuration Manager

Under Terminal Objects, highlight Host Sessions  
Under the Edit menu select New, Telnet 3270 Session  
In the Session Name box type FAMIS, or another name if desired  
Next to Session Type click the Communication button  
In the box next to Host Name/IP Address type tammvsl.tamu.edu  
Select Custom TCP Port and change the port to 992  
Under the Security tab, check SSL/TLS handshake connection, Click OK  
Click Select Font, select Fixedsys and Click OK  
Under the Terminal tab, check the box next to Enable Insert Mode

Toggling  
and Click OK

Highlight Users  
Right click the System user and select Modify  
Under the Parameters1 tab, uncheck the box next to Logon Password

Required  
Under the Parameters1 tab, select the desired cursor size  
Under the Parameters2 tab, select the session created above as the  
default

Under the Printer Fonts tab:  
Select Courier New (Western), Regular, 8 pt  
Change the top and bottom margins to 0  
Click OK

Close Configuration Manager

- 3) Run Terminal and click the Open Session button to connect to the login screen.

**See manuals included on the product installation CD for additional information.**