

# Setting up the ODBC Datasource on your computer

Support Email: [bpphelp@tamu.edu](mailto:bpphelp@tamu.edu)

Microsoft SQL Server DSN Configuration

This wizard will help you create an ODBC data source that you can use to connect to SQL Server.

What name do you want to use to refer to the data source?

Name: BPP-SQL

How do you want to describe the data source?

Description: BPP SQL Server

Which SQL Server do you want to connect to?

Server: SAGO-SQL.tamu.edu

Finish Next > Cancel Help

Fill in as shown and click “Next”

Microsoft SQL Server DSN Configuration

How should SQL Server verify the authenticity of the login ID?

With Windows NT authentication using the network login ID.

With SQL Server authentication using a login ID and password entered by the user.

To change the network library used to communicate with SQL Server, click Client Configuration.

Client Configuration...

Connect to SQL Server to obtain default settings for the additional configuration options.

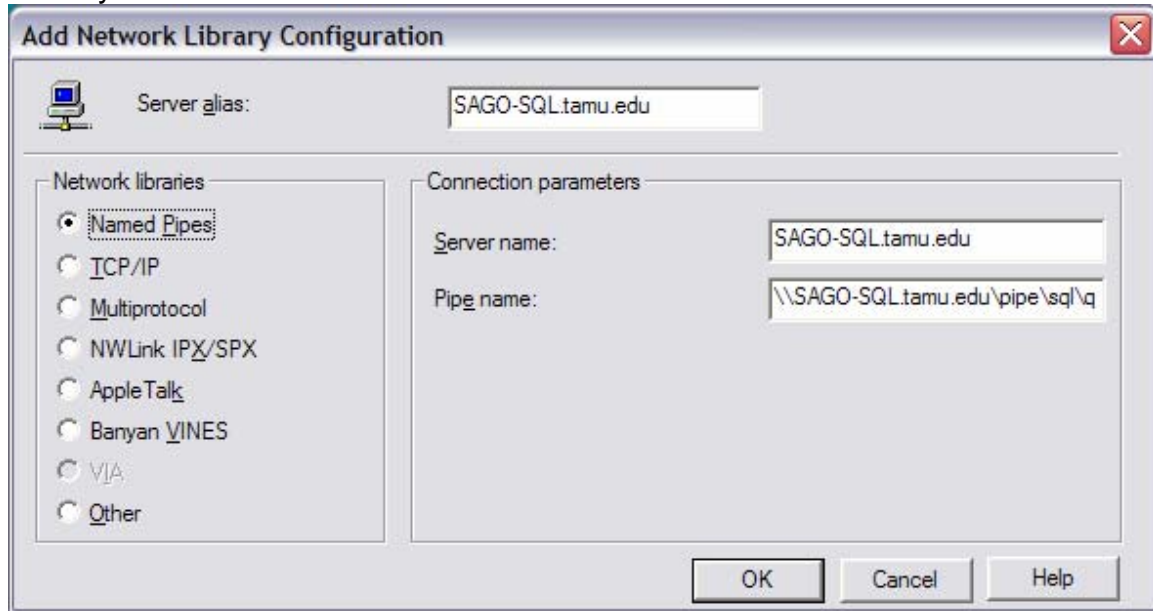
Login ID: field

Password:

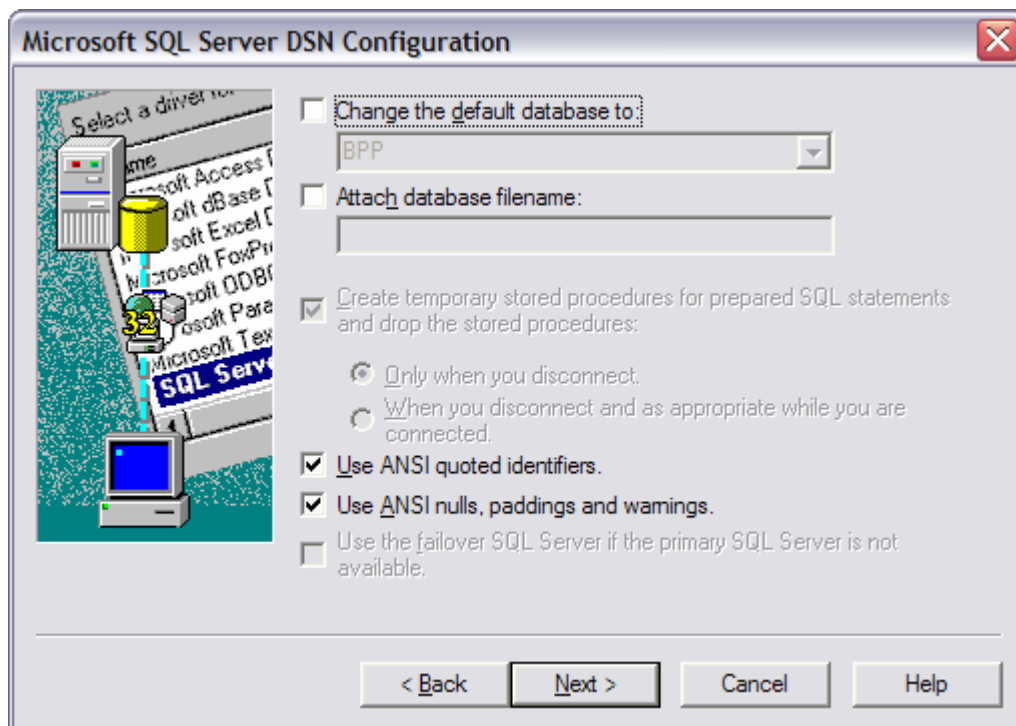
< Back Next > Cancel Help

Take the defaults and click “Next” here. If you get an error saying “Connection Failed”, try clicking on the “Client Configuration” button and you will see the “Add Network Library Configuration” screen below.

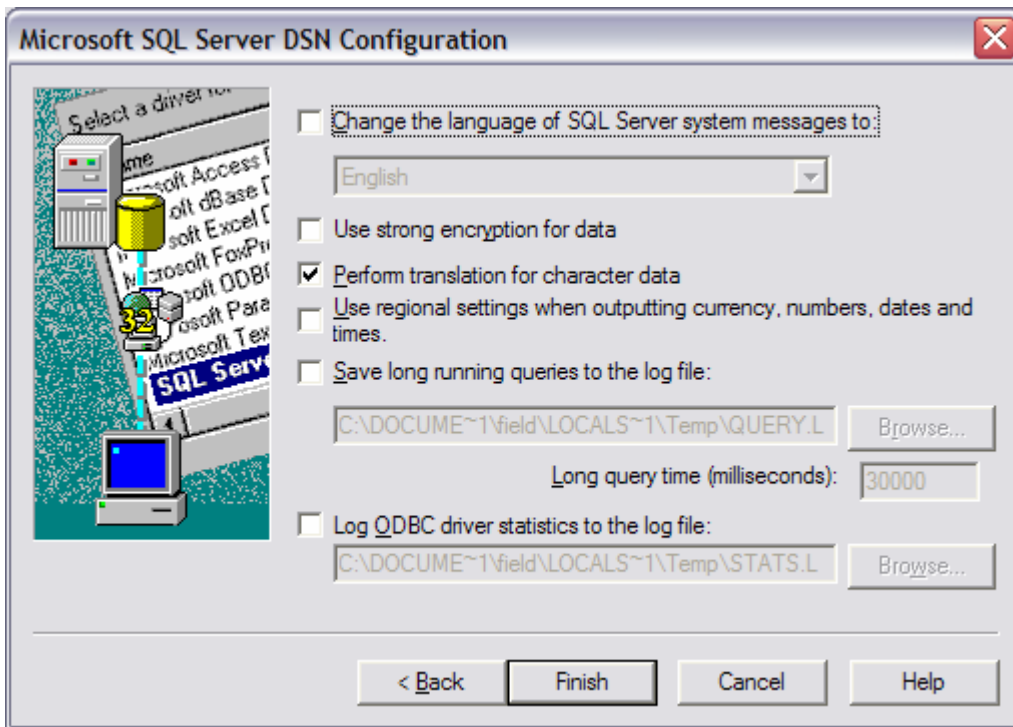
Set the Pipe name to [\\sago-sql.tamu.edu\pipe\sql\query](https://sago-sql.tamu.edu/pipe/sql/query) if it is not filled in already.



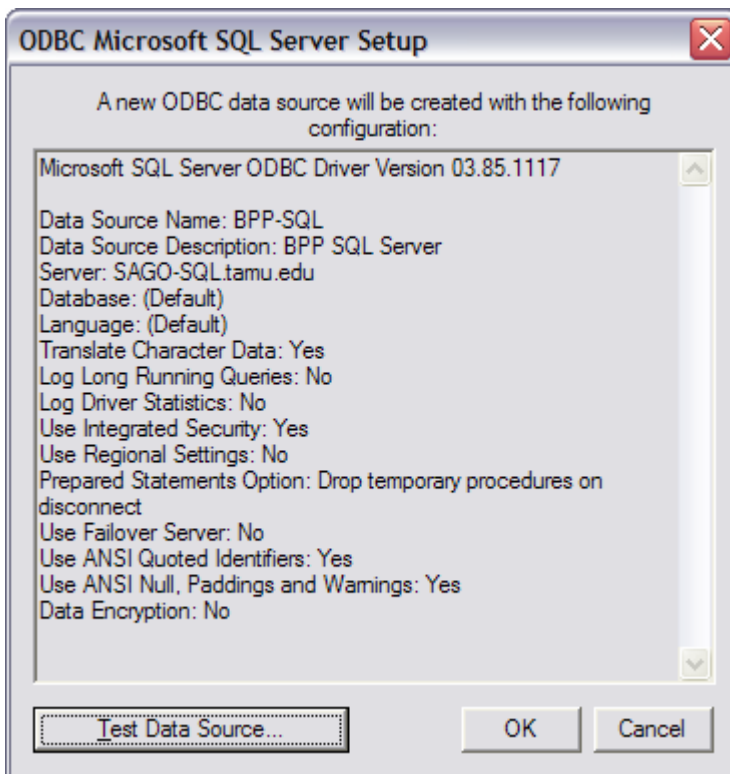
If you didn't get the "Connection Failed" error, you will not see the above dialog box, continue with the next step. However, if you got the error, change Network libraries to "Named Pipes" from TCP/IP and click OK.



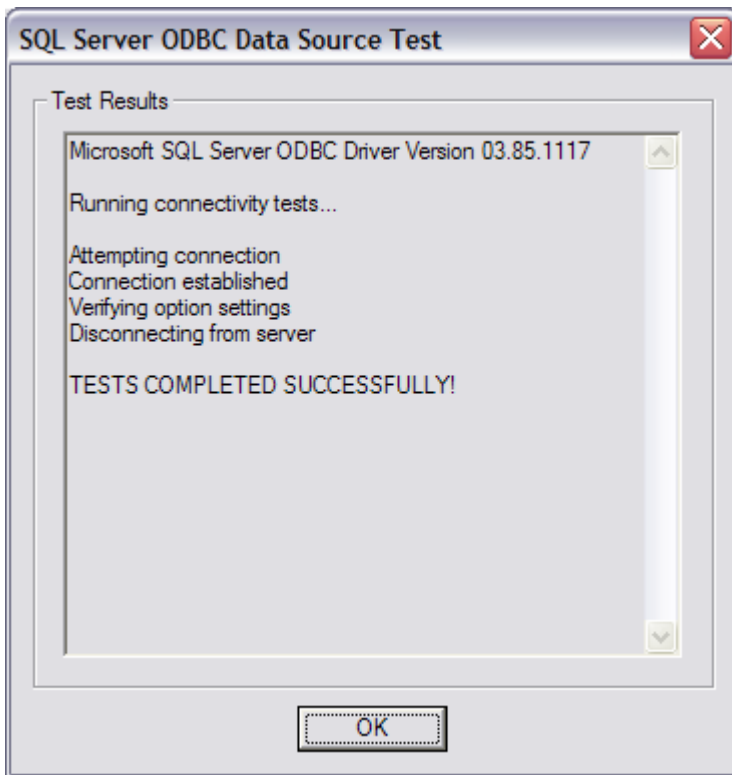
Take all defaults and click "Next"



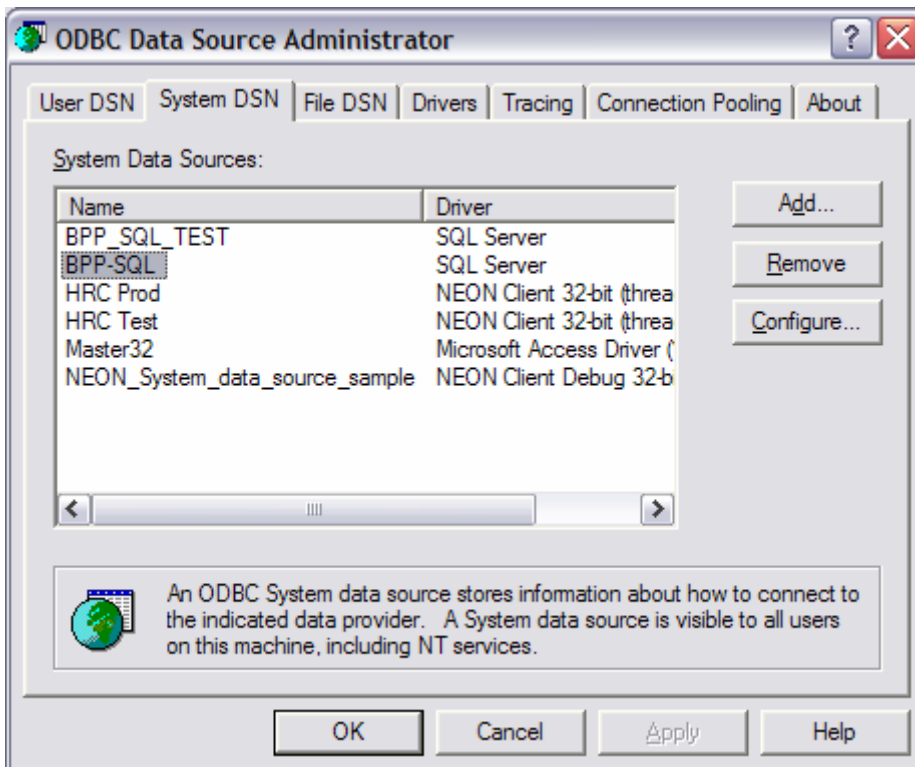
Take all defaults and click "Next"



Click "Test Data Source"



Click OK, then OK again on the following screen



Click OK to close the ODBC Data Source Administrator